



**T R O P H Y**  
PROPERTIES AND AUCTION  
LAND | RECREATIONAL | RESIDENTIAL

# Secluded Recreational Farm for Sale - Crawford County MO

www.TrophyPA.com • (855) 573-5263 • leads@trophyapa.com



## PROPERTY ADDRESS:

00 Gray Road  
Steelville, MO 65565

**PRICE:** \$ 209,050

**ACRES:** 113

**COUNTY:** Crawford

## PROPERTY HIGHLIGHTS:

- 113 acres
- 1+ acre pond
- Rustic cabin
- Borders Missouri Conservation Area
- Secluded
- Trail system throughout
- Good hunting

## PROPERTY DESCRIPTION:

Just a few miles South of Steelville, Missouri you will find this secluded 113 acre tract waiting for those looking for the peace and quiet offered in Crawford County.

The property has been owned by the same family since 1980 and features a small rustic cabin, a 1+ acre pond, and a trail system throughout the farm. The cabin has no electricity, but does have a rain-catching system to provide water.

For the hunter, this property has a variety of wildlife on site, not to mention this farm borders 77 acres of Missouri Conservation land that is bow hunting only.



**PRESENTED BY:**

**JASON CLEVELAND**

**Broker/Partner**

M: (636) 751-4579

P: (855) 573-5263 x701

jcleland@trophyapa.com

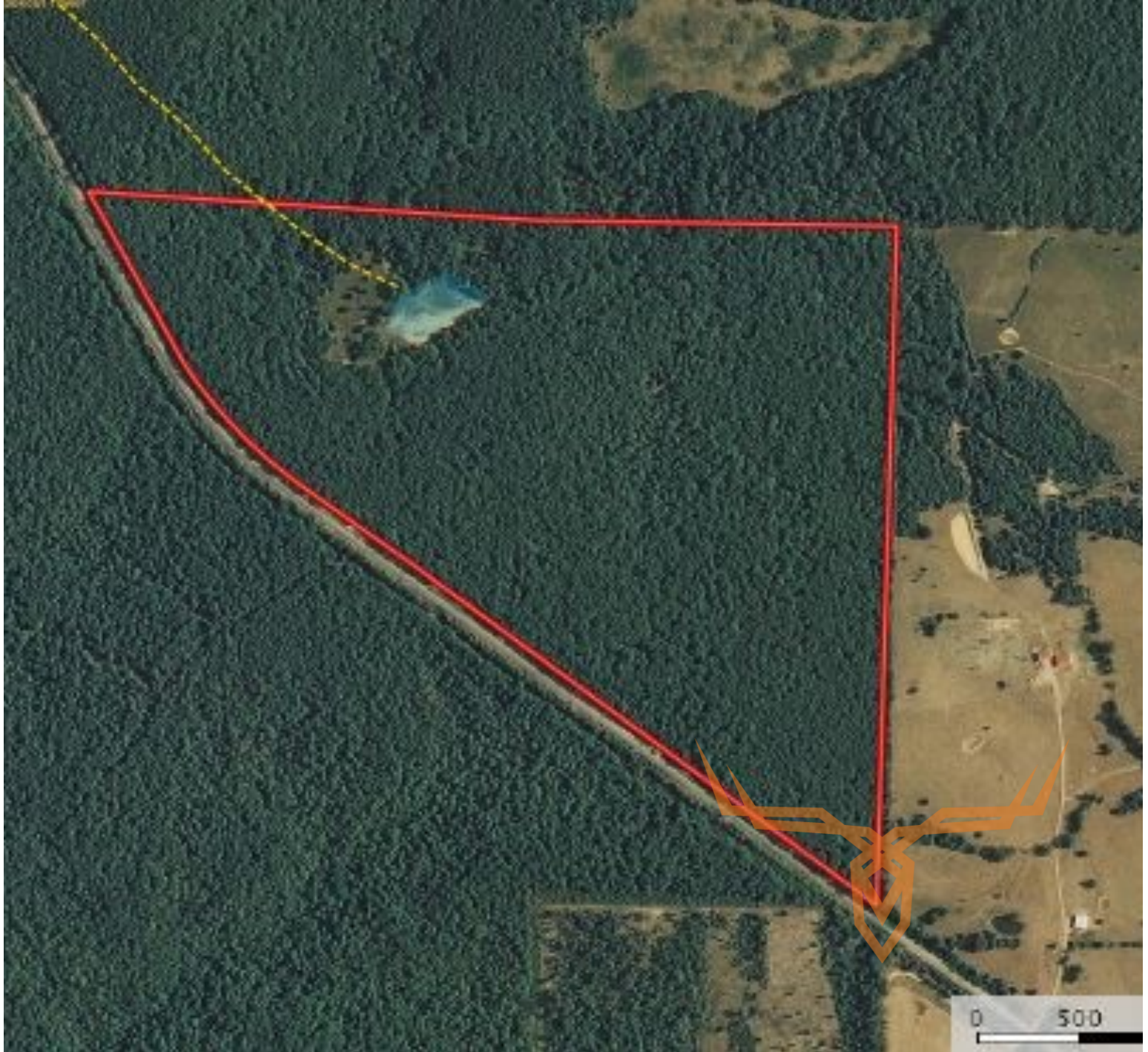
Trophy Properties and Auction  
15480 Clayton Road  
Suite 101  
Ballwin, MO 63011  
www.Trophyapa.com  
leads@trophyapa.com



**T R O P H Y**  
PROPERTIES AND AUCTION  
LAND | RECREATIONAL | RESIDENTIAL

# Secluded Recreational Farm for Sale - Crawford County MO

[www.TrophyPA.com](http://www.TrophyPA.com) • (855) 573-5263 • [leads@trophyPA.com](mailto:leads@trophyPA.com)



Broker does not guarantee the accuracy of sq. ft., lot size, or other information, buyer is advised to independently verify the accuracy of information through personal inspection and with appropriate professionals

**TAXES: \$42.49**

**TAX YEAR: 2018**