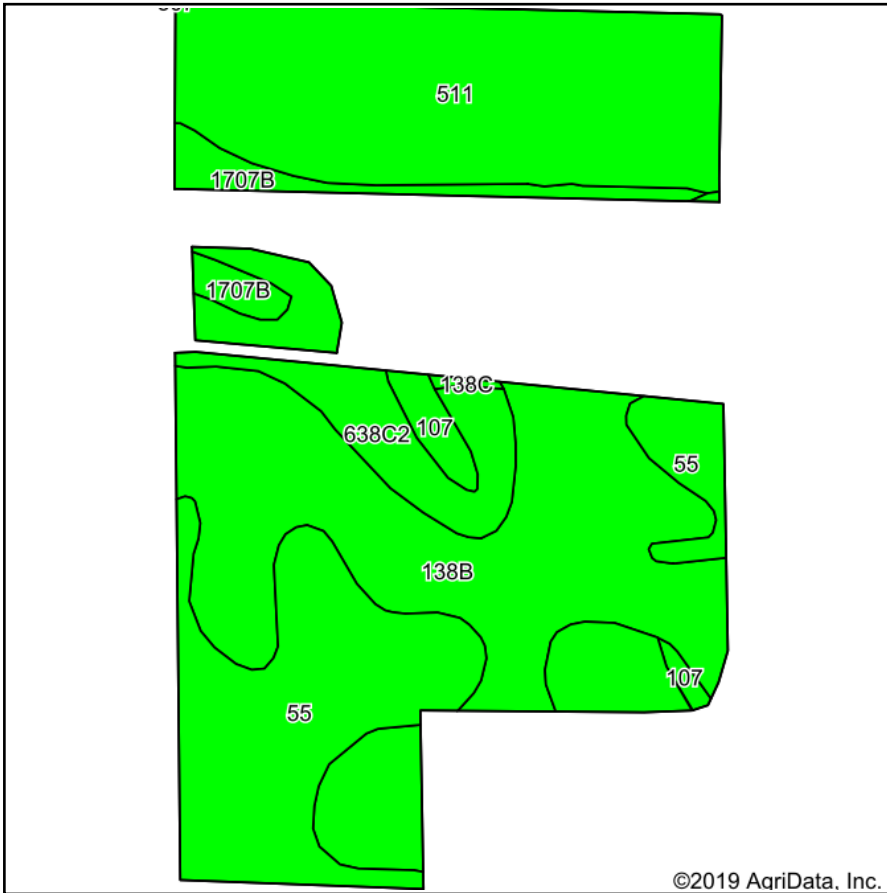
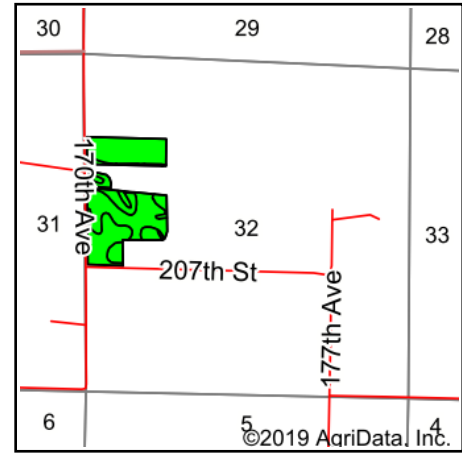


# Soils Map



Soils data provided by USDA and NRCS.

©2019 AgriData, Inc.



State: **Iowa**  
 County: **Dickinson**  
 Location: **32-99N-37W**  
 Township: **Lakeville**  
 Acres: **43.57**  
 Date: **4/15/2019**

& REAL ESTATE, INC  
**MIDWEST LAND**  
 MANAGEMENT  
 712-262-3110

Maps Provided By:



© AgriData, Inc. 2019

www.AgriDataInc.com



Area Symbol: IA059, Soil Area Version: 28

Code	Soil Description	Acres	Percent of field	CSR2 Legend	Non-Irr Class *c	CSR2**	CSR
138B	Clarion loam, 2 to 6 percent slopes	14.73	33.8%		Ile	89	73
511	Blue Earth mucky silt loam, 0 to 1 percent slopes	11.89	27.3%		IIIw	66	49
55	Nicollet clay loam, 1 to 3 percent slopes	10.55	24.2%		Iw	89	73
638C2	Clarion-Storden complex, 6 to 10 percent slopes, moderately eroded	3.84	8.8%		IIIle	75	52
1707B	Delft-Terril complex, 1 to 5 percent slopes	1.67	3.8%		IIw	78	59
107	Webster clay loam, 0 to 2 percent slopes	0.78	1.8%		IIw	86	70
138C	Clarion loam, 6 to 10 percent slopes	0.11	0.3%		IIIle	84	67
<b>Weighted Average</b>						<b>81</b>	<b>64</b>

\*\*IA has updated the CSR values for each county to CSR2.

\*c: Using Capabilities Class Dominant Condition Aggregation Method

Soils data provided by USDA and NRCS.