

The map displays a complex land survey with several key features:

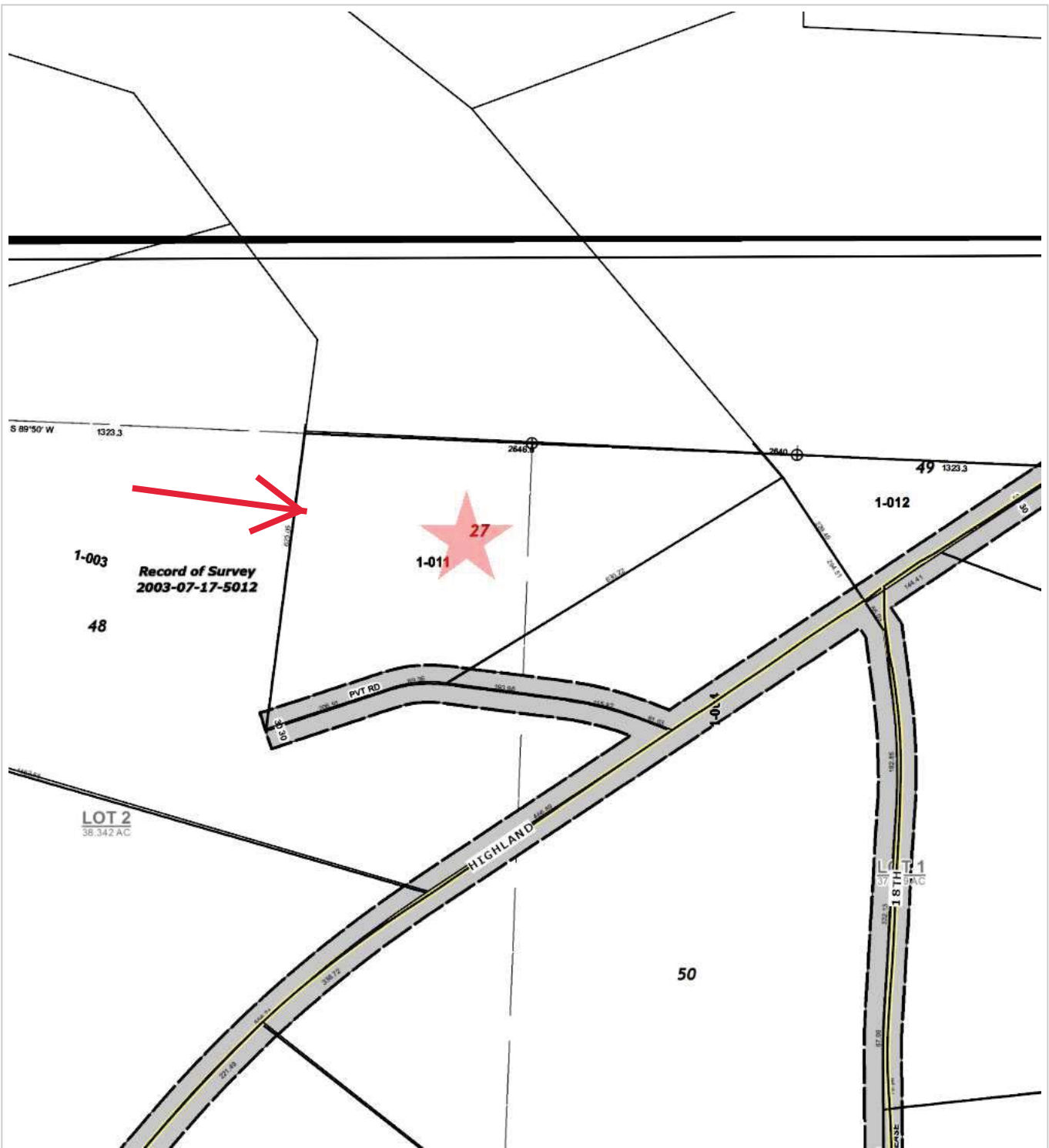
- Roads:** 'BLUE RIDGE' runs along the left side, 'KINSMAN' runs horizontally across the top, and 'HIGHLAND' runs diagonally from the bottom left towards the center right.
- Proposed Subdivision:** Indicated by a red star and a red arrow pointing to a specific location on a parcel.
- Survey Data:** Includes lot numbers (e.g., 6-007, 3-014, 28, 4-000, 49, 1-000), acreage (e.g., 1.000, 1.000, 1.000), and a 'Record of Survey 2003-07-17-5012'.
- Other Features:** A dashed line labeled '100' is visible, and a '100' is also marked near the bottom right corner.



**Site Address: Kinsman Ct E**

Sentry Dynamics, Inc. and its customers make no representations, warranties or conditions, express or implied, as to the accuracy or completeness of information contained in this report.

Assessor Street Map



**CHICAGO TITLE  
OF WASHINGTON**  
[www.usechicagotitle.com](http://www.usechicagotitle.com)

Parcel ID: 0316031011

Site Address: Kinsman Ct E

Sentry Dynamics, Inc. and its customers make no representations, warranties or conditions, express or implied, as to the accuracy or completeness of information contained in this report.