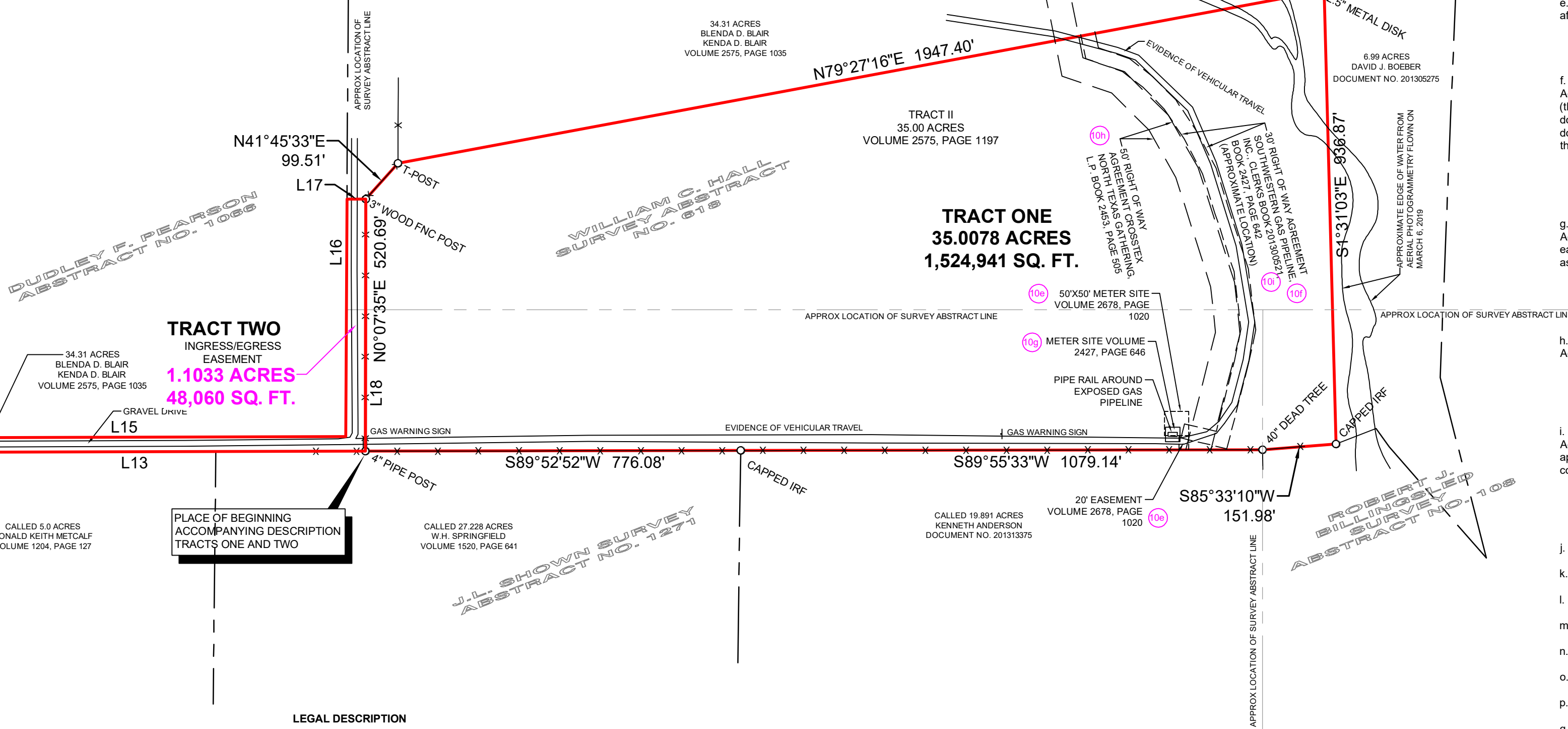


ZONE X AREAS DETERMINED TO BE OUTSIDE OF THE 0.2% ANNUAL CHANCE FLOODPLAIN

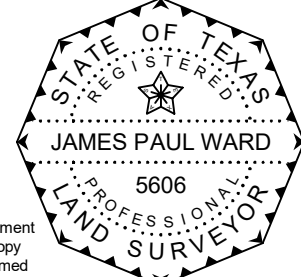
LINE TABLE		
NO.	BEARING	LENGTH
L13	S89°51'19"W	953.36'
L14	N04°32'36"W	30.01'
L15	N89°51'19"E	915.30'
L16	N00°18'36"E	491.09'
L17	S89°41'24"E	38.93'
L18	S00°07'35"W	520.69'



Bearings are based on the Texas Coordinate System of the North American datum of 1983 (2011) epoch 2010, north central zone 4202 (us survey feet) from GPS observations using the RTK cooperative network.

BEARINGS AND COORDINATES ARE BASED ON THE TEXAS COORDINATE SYSTEM OF THE NORTH AMERICAN DATUM OF 1983 (2011) EPOCH 2010, NORTH CENTRAL ZONE 4202 (US SURVEY FEET) FROM GPS OBSERVATIONS USING THE RTK COOPERATIVE NETWORK.

If the seal is not embossed, this document is an unauthorized copy and should be presumed to contain alterations.



252 WEST MAIN STREET, SUITE F, AZLE TX 76020
817-33A-WARD (332-9273) 877-982-9273
survey@a-wardsurveying.com TBPLS Firm No. 10194435

x. Not a survey matter.