

LISTING #14509

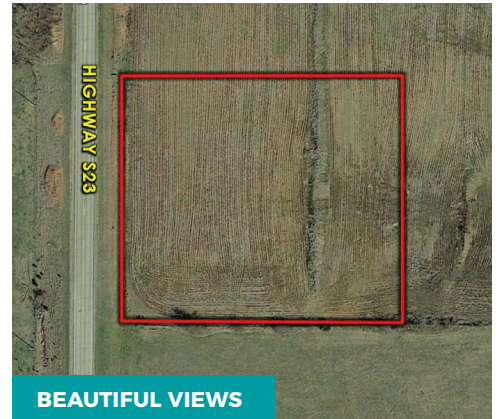
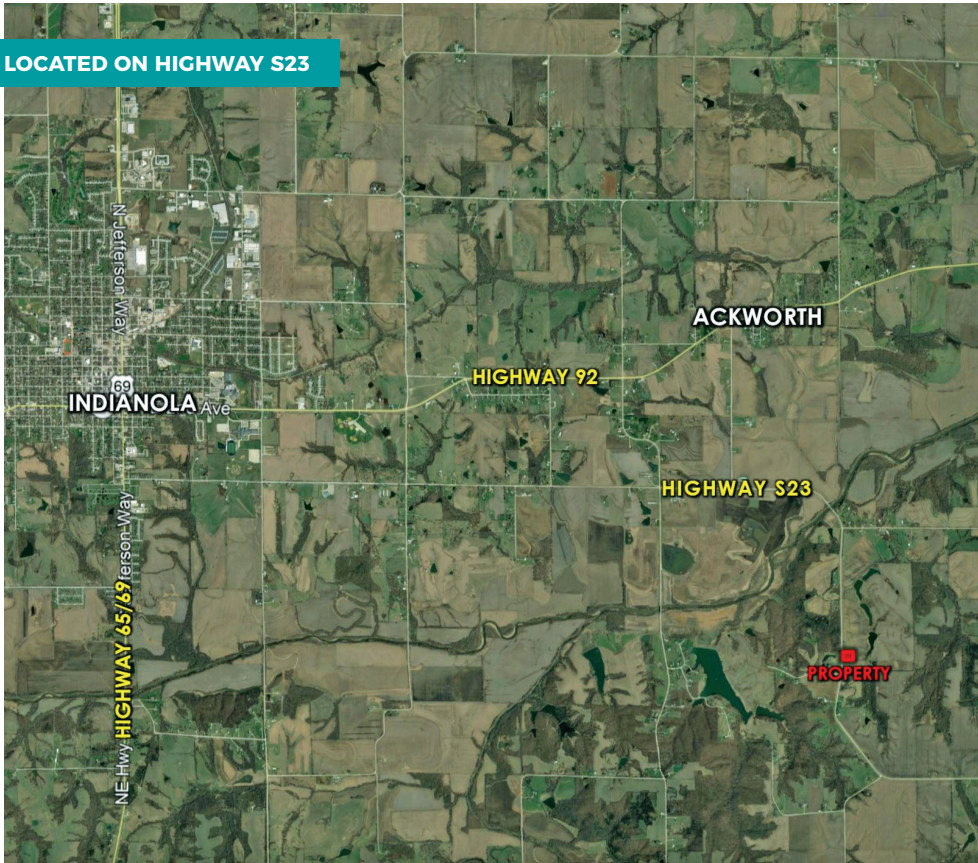
S23 Highway
Milo, IA 50166

WARREN COUNTY

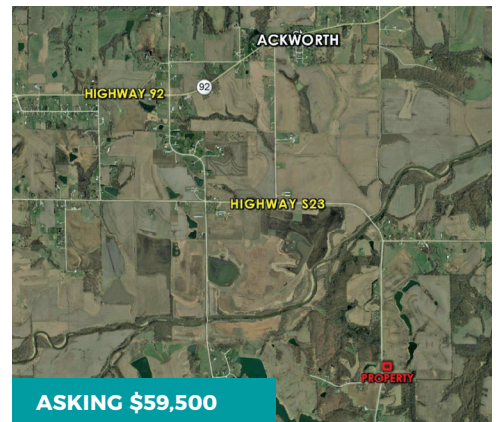
LAND AVAILABLE

2.5 Acres M/L
Price: \$59,500

LOCATED ON HIGHWAY S23



BEAUTIFUL VIEWS



ASKING \$59,500

Offering 2.5 acres m/l on Highway S23 just southeast of Indianola, IA in Warren County. This property comes with beautiful views of the rolling southern Iowa countryside, making it a perfect spot to build. The land will be surveyed with accepted purchase agreement and approved financing. If you're looking for a larger tract, there is additional land available up to 160 acres and including several ponds. This one will go quick so don't hesitate!

DIRECTIONS

From Indianola, go east on Highway 92 for approximately 3.5 miles then turn south on Highway S23. Stay on S23 for approximately 3.2 miles. The property is on the east side of the road.

DETAILS

MLS Number: 581385

Parcel Number: 17000010443

General Area: Milo

Zoning: Ag

School District: Southeast Warren

Possession: At Closing

Terms: Cash, Conventional



For more information, pictures, and maps please look up listing #14509 on our website:
PeoplesCompany.com



DARAN BECKER
515-979-3498
daran@peoplescompany.com