



T R O P H Y
PROPERTIES AND AUCTION
LAND | RECREATIONAL | RESIDENTIAL

40 +/- Acres for Sale - Fayette County Illinois

www.TrophyPA.com • (855) 573-5263 • leads@trophyhpa.com



PROPERTY ADDRESS:

1420 County Rd 1825
Farina, IL 62418

PRICE: \$136,000

ACRES: 40

COUNTY: Fayette

PROPERTY HIGHLIGHTS:

- Secluded location
- Mature timber
- Creek
- 2-3 acre field
- Possible lake site
- Great possible home sites

PROPERTY DESCRIPTION:

This 40 +/- acres for sale in Fayette County Illinois is a very diverse property. It has rolling oak ridges, multiple thickets for bedding areas, 2-3 acre field for food plots, and a nice creek that meanders through the middle of the property. I found 3-4 sheds while walking the farm and really big dead buck. There were deep deer trails up and down the oak ridges and turkey scratchings everywhere. There are some great possible home or cabin sites up on the ridges overlooking the creek that would have some great views. This farm sits about 15 min west of Effingham IL.



PRESENTED BY:

SHANE YEARIAN

Land Specialist - IL

M: (618) 830-2825

P: (855) 573-5263 x710

seyarian@trophyhpa.com

Trophy Properties and Auction

15480 Clayton Road
Suite 101

Ballwin, MO 63011

www.Trophyhpa.com

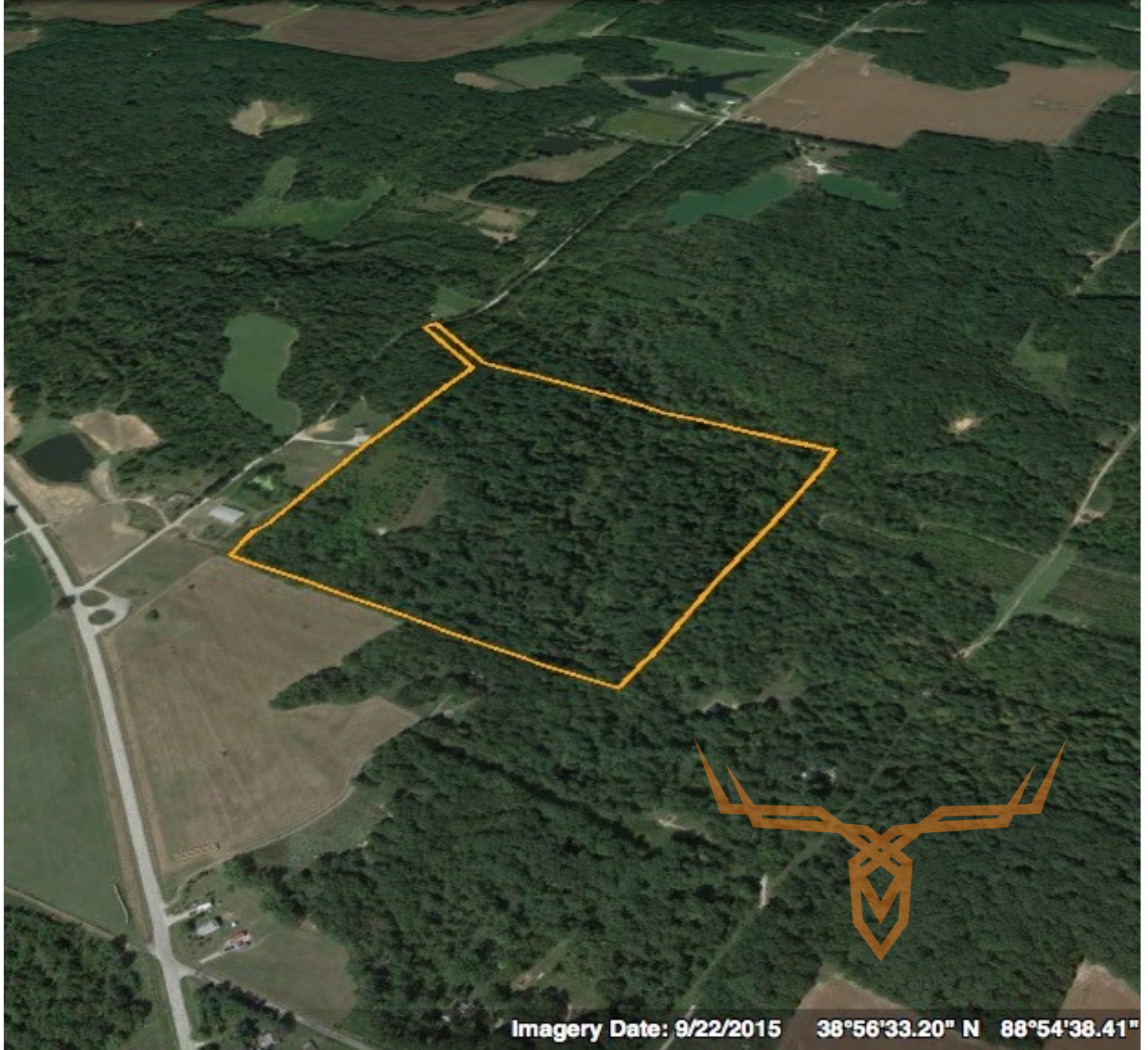
leads@trophyhpa.com



T R O P H Y
PROPERTIES AND AUCTION
LAND | RECREATIONAL | RESIDENTIAL

40 +/- Acres for Sale - Fayette County Illinois

www.TrophyPA.com • (855) 573-5263 • leads@trohypa.com



Imagery Date: 9/22/2015 38°56'33.20" N 88°54'38.41"

Broker does not guarantee the accuracy of sq. ft., lot size, or other information, buyer is advised to independently verify the accuracy of information through personal inspection and with appropriate professionals

TAXES: \$140

TAX YEAR: 2017