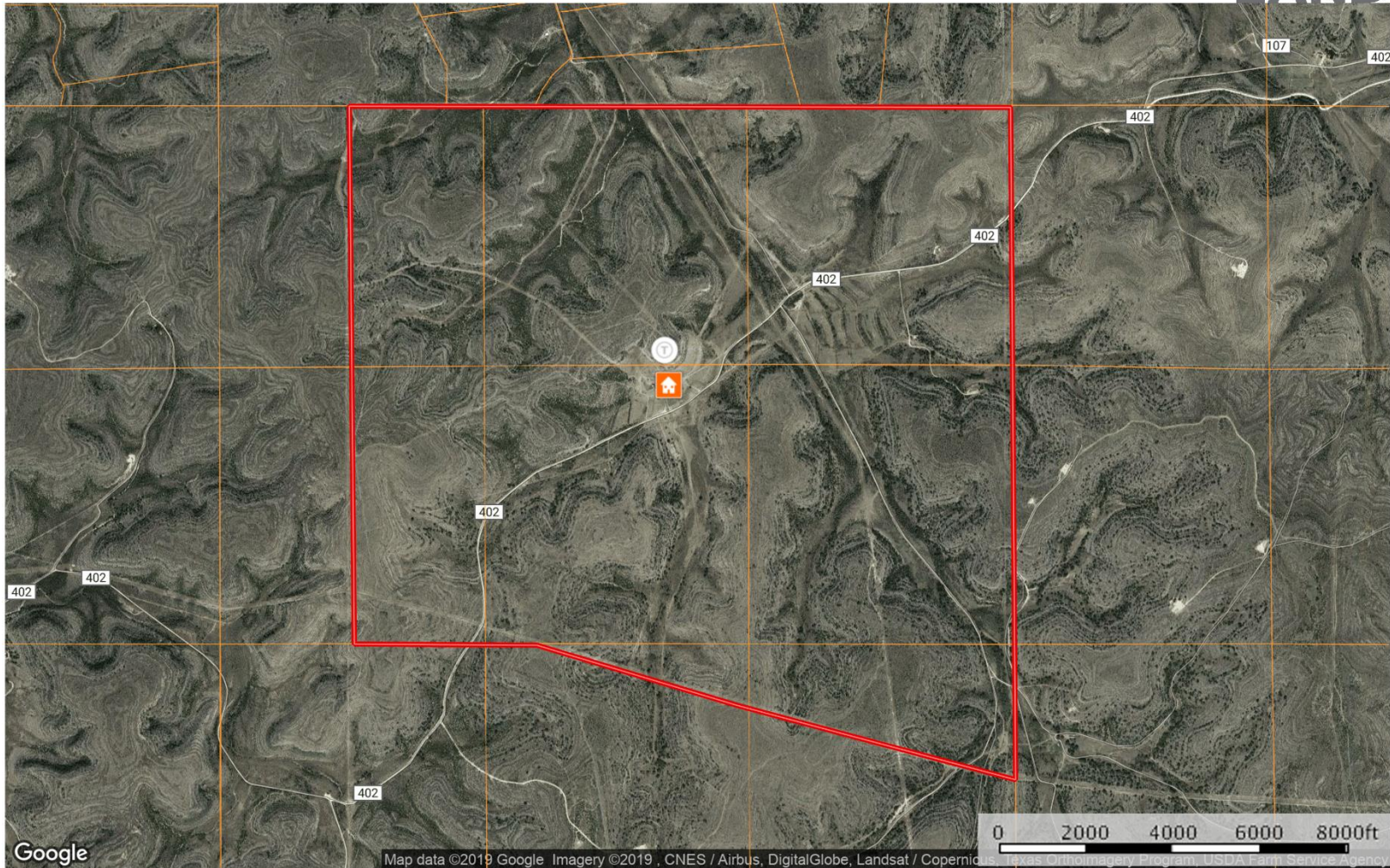


Freeman Kincaid Ranch
Crockett County, Texas, AC +/-

KELLERWILLIAMS
LAND



 House


 Trough

 Boundary

Sterling Fryar
P: 325-276-0757

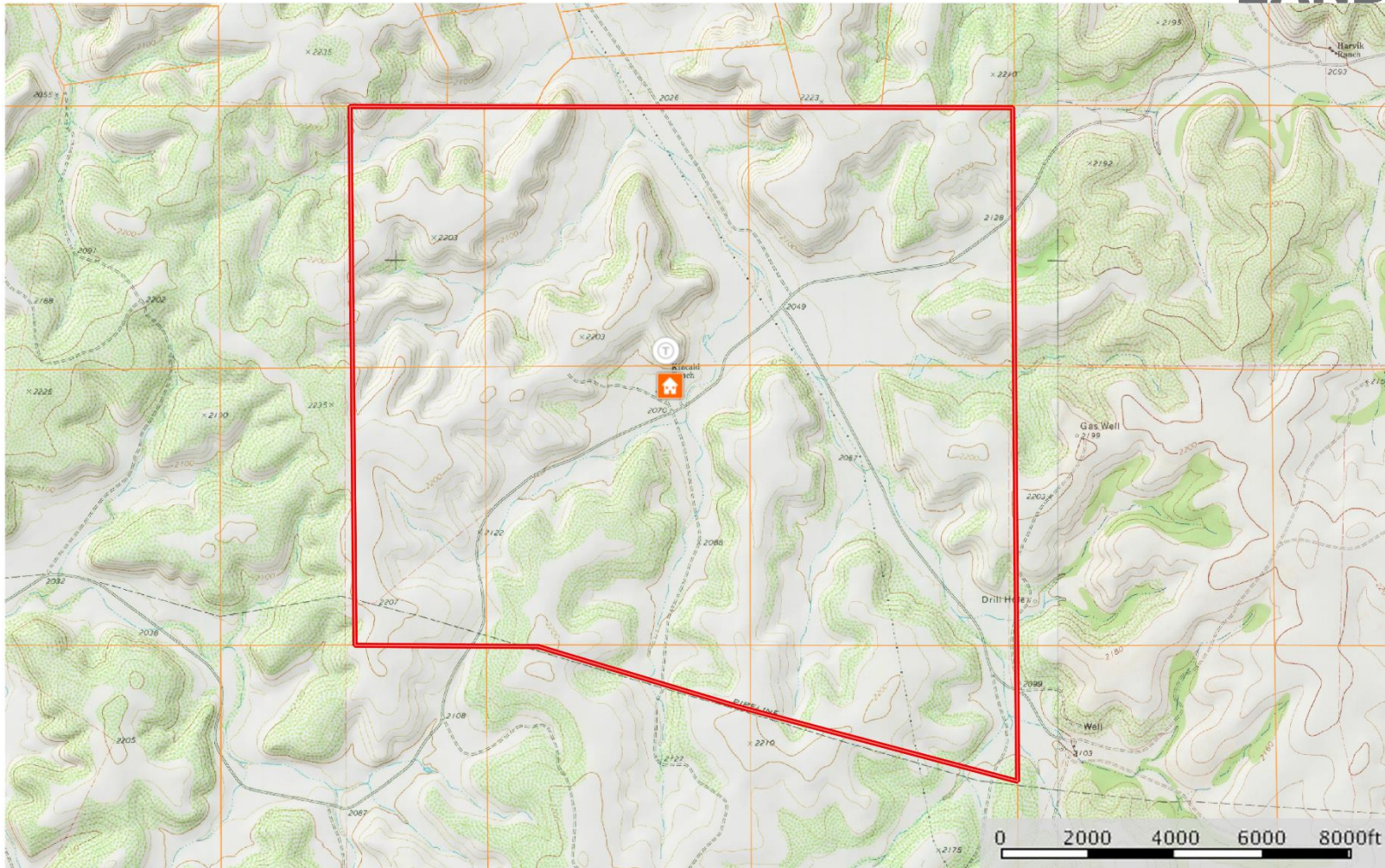
sterling.fryar@kw.com

3814 Sherwood Way

 The information contained herein was obtained from sources deemed to be reliable. MapRight Services makes no warranties or guarantees as to the completeness or accuracy thereof.

Freeman Kincaid Ranch
Crockett County, Texas, AC +/-

KELLERWILLIAMS
LAND



House



Trough



Boundary

Sterling Fryar
P: 325-276-0757

sterling.fryar@kw.com

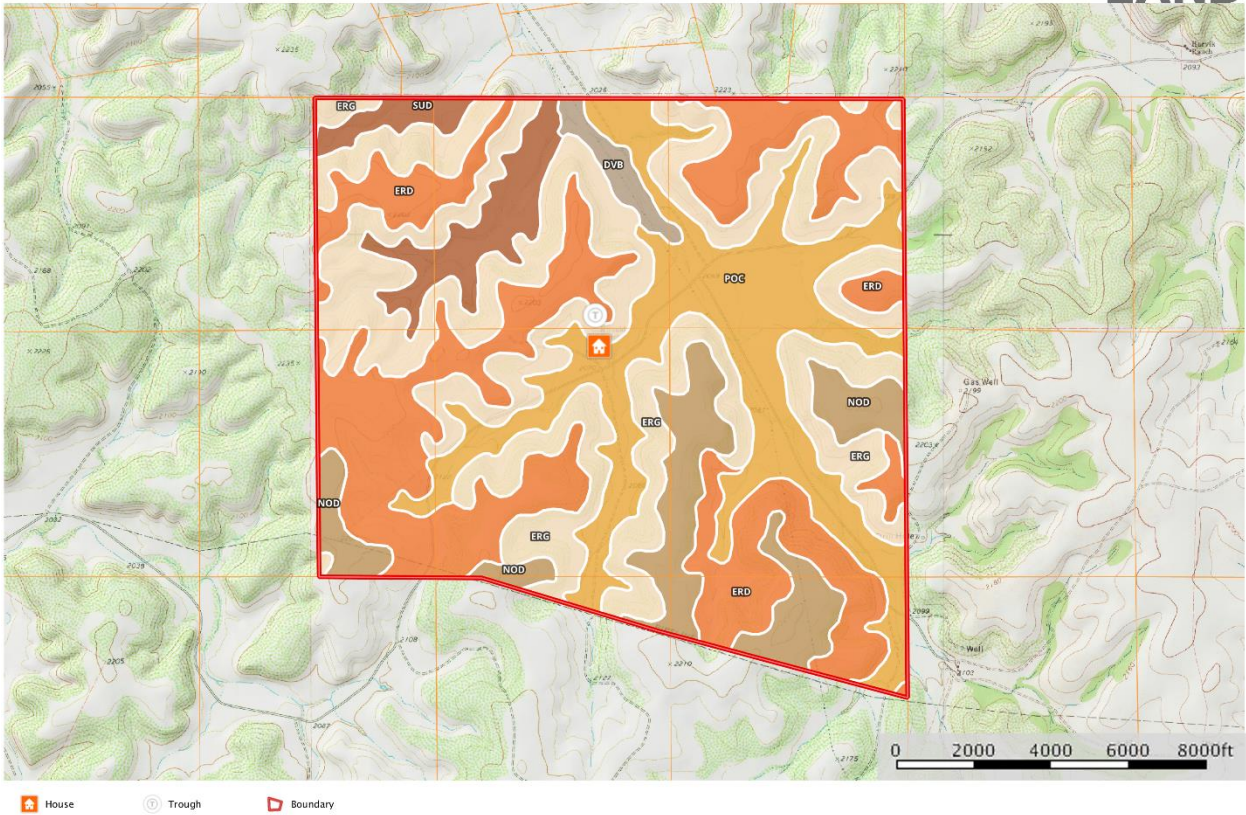
3814 Sherwood Way



The information contained herein was obtained from sources deemed to be reliable. MapRight Services makes no warranties or guarantees as to the completeness or accuracy thereof.

Freeman Kincaid Ranch
Crockett County, Texas, AC +/-

KELLERWILLIAMS
LAND



Sterling Fryar
P: 325-276-0757 sterling.fryar@kw.com 3814 Sherwood Way

M The information contained herein was obtained from sources deemed to be reliable. Maplight Services makes no warranties or guarantees as to the completeness or accuracy thereof.

Boundary 3620 & ac

SOIL CODE	SOIL DESCRIPTION	ACRES	%	CAP
NOD	Non-wooded, 0 to 5 percent slopes	380.7	10.09	7a
ERG	Excellent Rangeland, 0 to 5 percent slopes	1004.1	28.02	7a
ERG	Excellent Rangeland, 5 to 10 percent slopes	1178.9	33.43	7a
ERG	Excellent Rangeland, 10 to 15 percent slopes	770.5	21.93	7a
ERG	Excellent Rangeland, 15 to 20 percent slopes	194.4	5.56	7a
ERG	Excellent Rangeland, 20 to 25 percent slopes	51.1	1.45	7a
TOTALS		3820.6	100%	6.72

Capability Legend

Increased Limitations and Hazards
Decreased Adaptability and Freedom of Choice Users

Land Capability Classes (irrigated)

	1	2	3	4	5	6	7	8
Wild Life	+	+	+	+	+	+	+	+
Forestry	+	+	+	+	+	+	+	+
Limited	+	+	+	+	+	+	+	+
Moderate	+	+	+	+	+	+	+	+
Intense	+	+	+	+	+	+	+	+
Limited	+	+	+	+	+	+	+	+
Moderate	+	+	+	+	+	+	+	+
Intense	+	+	+	+	+	+	+	+
Very Intense	+	+	+	+	+	+	+	+

Grazing Calibration

(c) climatic limitations (e) susceptibility to erosion
(s) soil limitations within the rooting zone (w) excess of water