

# **TA Tom Anderson**

## **REAL ESTATE**

146 West 2nd Street  
P.O. Box 168  
Moscow Mills, MO 63362  
636-366-4880  
[www.tarealestate.com](http://www.tarealestate.com)

Minutes From The St. Charles County Line

**67 Acres**  
***"Moscow Mills"***  
**Southern Lincoln County, MO**



- 67 Acres
  - 48 Acres Tillable/Brush
  - 19 Acres Heavy Timber
  - Small Pond
- Paved County Road
- Electric/Phone

***Ideal for Development or  
Private Estate***

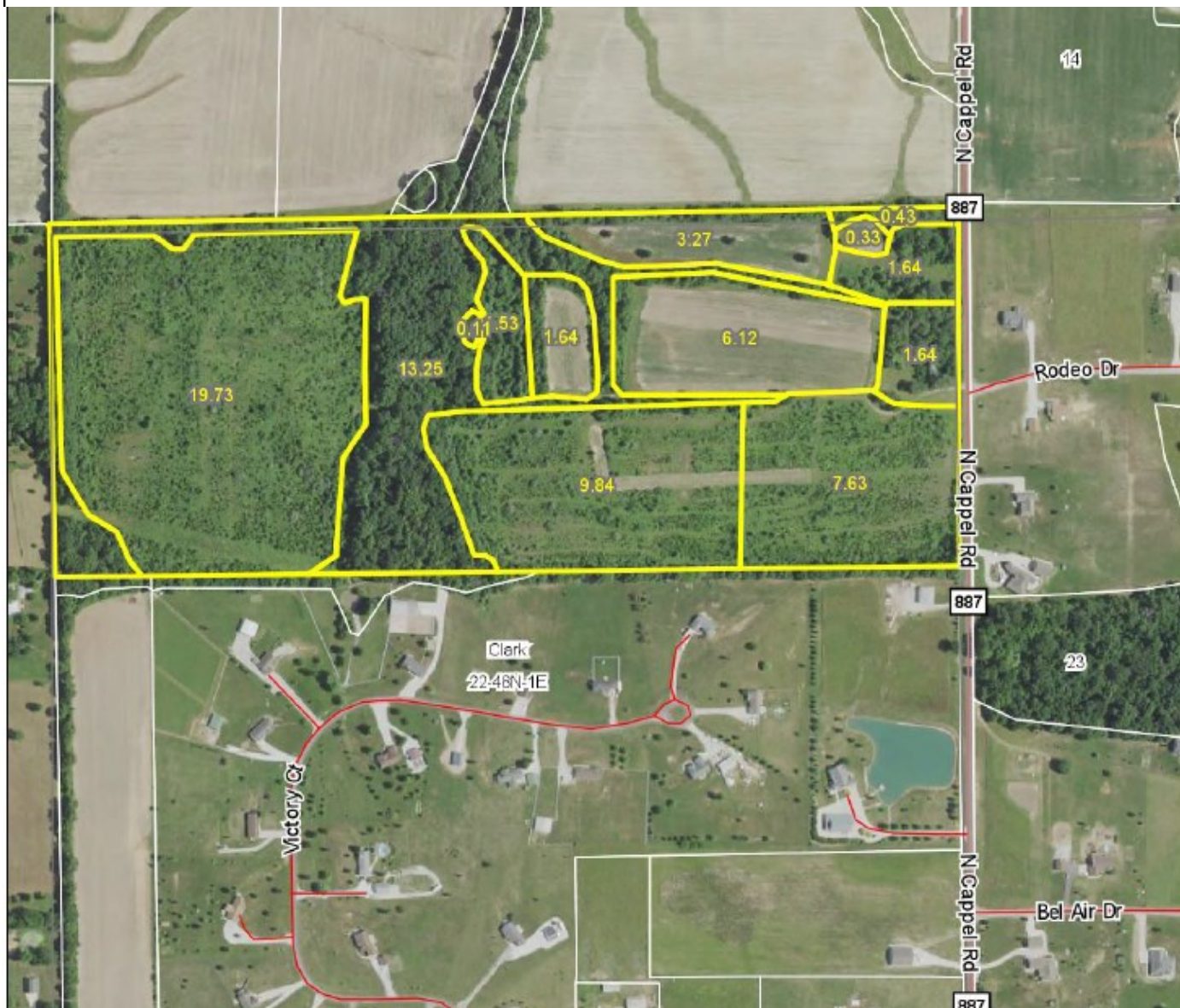
**NEW Asking Price**  
**\$599,650**  
**(\$8,950 per acre)**

**For Information or Showing Contact Tom Anderson at 636-262-4447**

*This offering is subject to error, omission, prior sale, change of price, or withdrawal without notice. Information contained in the presentation is deemed reliable but not warranted.*



**67 Acres**  
**“Moscow Mills”**  
**Southern Lincoln County, MO**



**For Information or Showing Contact Tom Anderson at 636-262-4447**

*This offering is subject to error, omission, prior sale, change of price, or withdrawal without notice. Information contained in the presentation is deemed reliable but not warranted.*