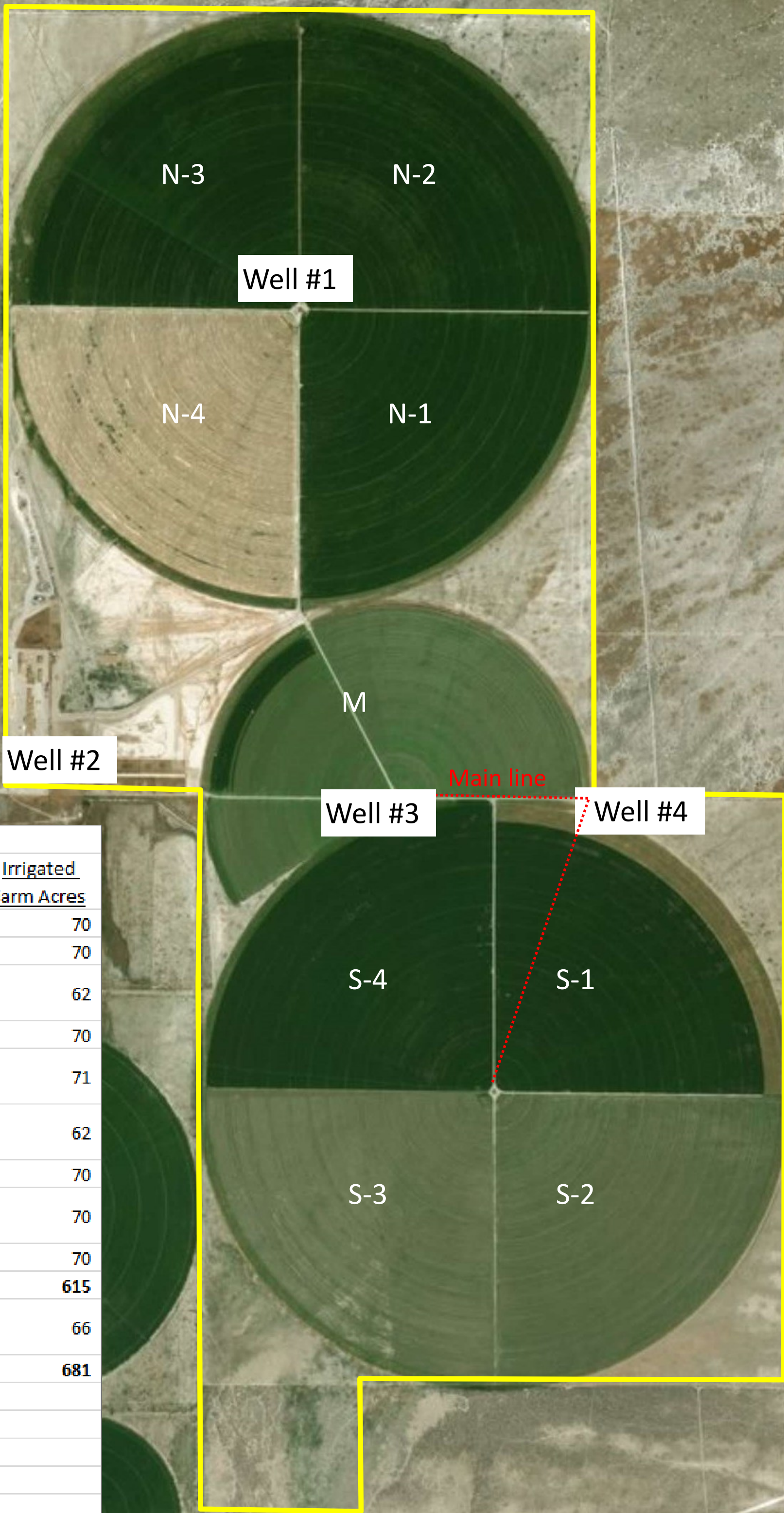


Lund Hay Farm: Fall 2019



IRRIGATED LAND: 2019**			
Map ID	2018 Crop	2019 Crop	<u>Irrigated Farm Acres</u>
N-1	Hay - Year 1	Hay - Year 2	70
N-2	Hay - Year 1	Hay - Year 2	70
N-3	Triticale	Orchard Grass/Alfalfa	62
N-4	Hay - Year 2	Hay - Year 3	70
M	Triticale	Orchard Grass/Alfalfa	71
S-1	Hay - Year 6	Orchard Grass/Alfalfa	62
S-2	Hay - Year 3	Hay - Year 4	70
S-3	Hay - Year 4	Orchard Grass/Alfalfa	70
S-4	Hay - Year 5	Hay - Year 6	70
Total Farm Acres:			615
Irrigated Pasture (end of pivots)			66
Total Irrigated Acres			681
2018 Production:			
Harvested Alfalfa:	2,375 tons*		
Harvested Triticale:	550 tons		
Irrigated Pasture:	135 cow/calf pairs for 5 months		
*Additional alfalfa to be left uncut for fall/winter grazing.			
**All acreages and yields are approximate.			

Contact:
Dan Nelson
801-482-7564
www.highlandranches.com



HIGHLAND
COMMERCIAL

Disclaimer: All information and boundaries are believed to be accurate but are subject to change and correction. Buyer responsible to independently verify all information.

WELLS						
Map Number	Pump Size (HP)	GPM (approx.)	Age (approx.)	Well Depth	Pumping Level	Water Rights
1	250	1950	7 years, new bowls	386	102	40201, 40203
2	3	30	3 years	250	100	82557
3	100	1100	5 years	400	102	82482, 77094
4	150	1550	2017-all new	400	102	82483

Source: Esri, DigitalGlobe, GeoEye, Earthstar Geographics, CNES/Community