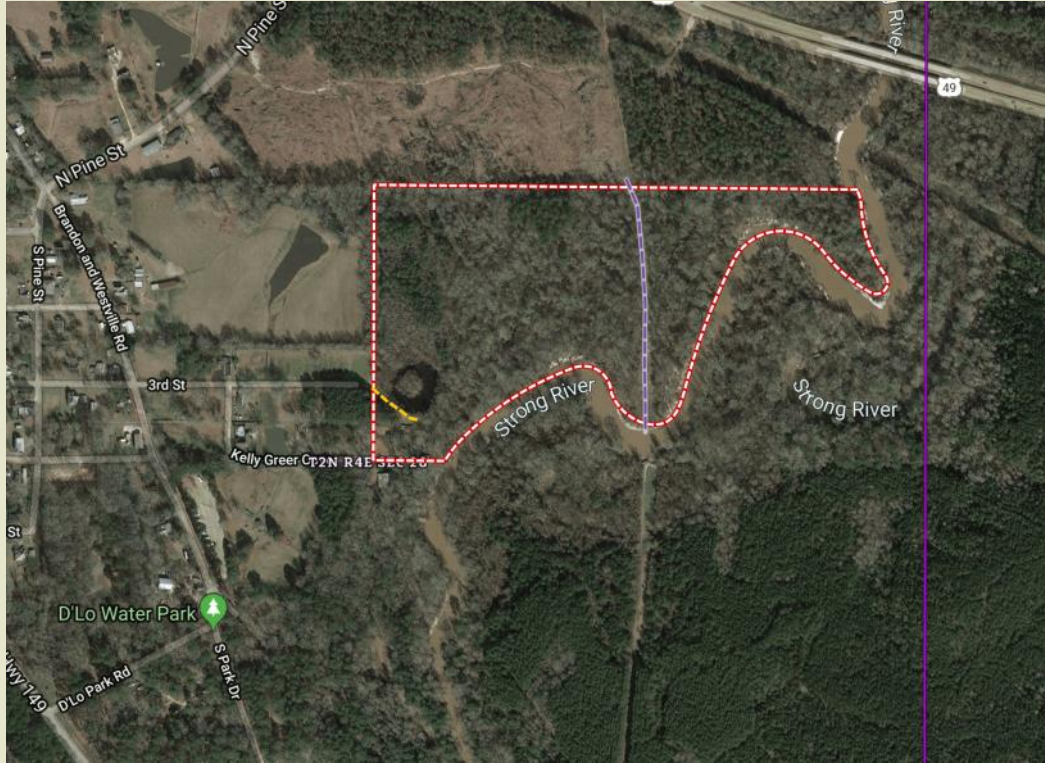


# D'Lo 45 Acres +/- Simpson County, MS



**CONTACT:**  
**JOE MALLARD**  
601-927-8222  
Jmallard@sartainsheritage.com

Sartain's Heritage Properties  
106 First Choice Drive  
Madison, MS 39110  
Phone: 601-856-2720  
Fax: 601-853-6765  
www.SartainsHeritage.com

**Property:** Strong River at D'Lo, 45 +/- acres, located in the town of D'Lo, at the end of 3<sup>rd</sup> Street. The property has over a 1/2 mile of Strong River frontage along the tract's southern boundary on the north side of the Strong River. Harwood timber throughout the property has not been cut in over 50 years. Adjoins the D'Lo Waterpark on southwest corner.

**Location:** Section 2, Township 2 North, Range 4 East, Simpson County, Mississippi. D'Lo, MS. East end of 3<sup>rd</sup> Street.

**Price: \$74,000**

Joe R. Mallard 601-927-8222