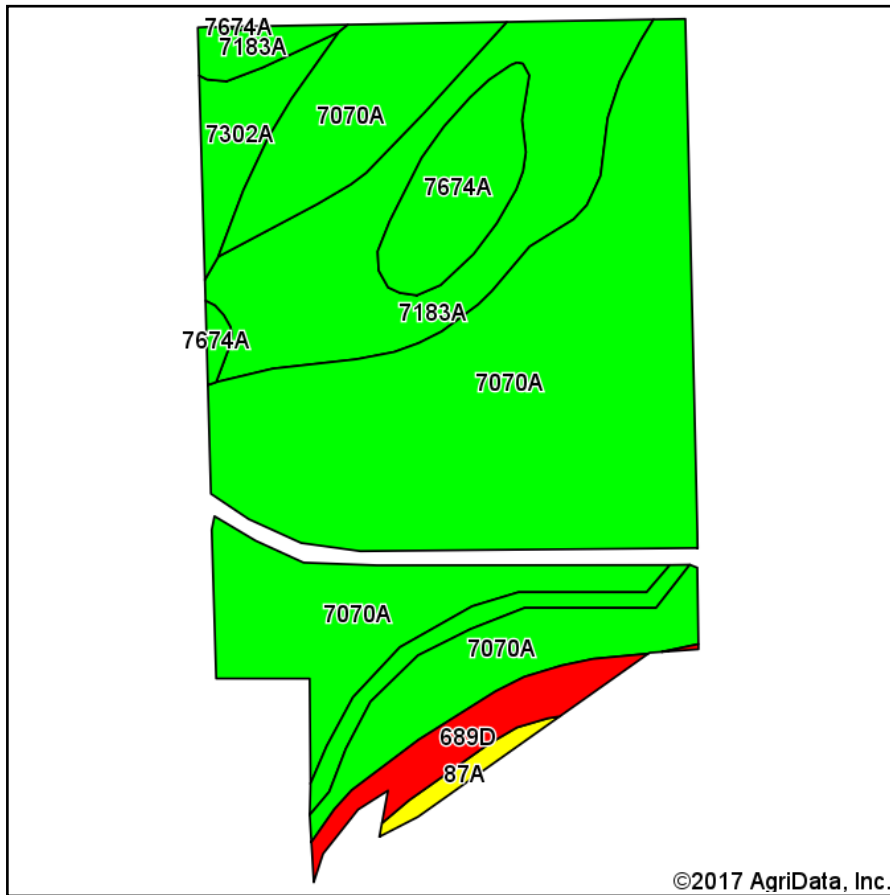
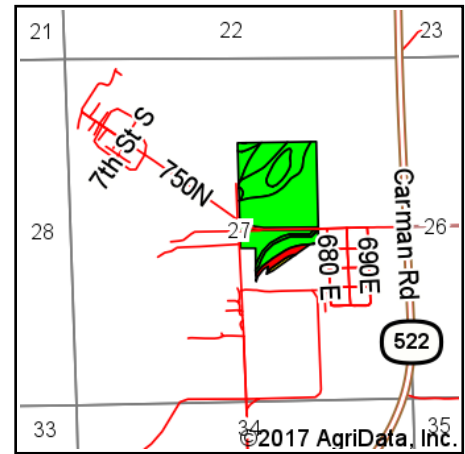


Soils Map



Soils data provided by USDA and NRCS.



State: **Illinois**
 County: **Henderson**
 Location: **27-9N-6W**
 Township: **Carman**
 Acres: **50.05**
 Date: **4/28/2017**



Area Symbol: IL071, Soil Area Version: 17

Code	Soil Description	Acres	Percent of field	Il. State Productivity Index Legend	Corn Bu/A	Soybeans Bu/A	Wheat Bu/A	Oats Bu/A ^b	Alfalfa ^d hay, T/A	Crop productivity index for optimum management
7070A	Beaucoup silty clay loam, 0 to 2 percent slopes, rarely flooded	33.54	67.0%		176	58	69	90	0.00	132
7183A	Shaffton loam, 0 to 2 percent slopes, rarely flooded	9.32	18.6%		155	51	60	80	0.00	116
7674A	Dozaville silt loam, 0 to 2 percent slopes, rarely flooded	3.03	6.1%		185	58	71	0	6.53	137
**689D	Coloma sand, 7 to 15 percent slopes	1.97	3.9%		**95	**30	**43	**49	0.00	**71
7302A	Ambraw clay loam, 0 to 2 percent slopes, rarely flooded	1.70	3.4%		154	50	61	75	0.00	114
87A	Dickinson sandy loam, 0 to 2 percent slopes	0.49	1.0%		142	46	56	74	3.39	104
Weighted Average					168.4	55.2	66	80.4	0.43	126

Table: Optimum Crop Productivity Ratings for Illinois Soil by K.R. Olson and J.M. Lang, Office of Research, ACES, University of Illinois at Champaign-Urbana. Version: 1/2/2012 Amended Table S2 B811

Crop yields and productivity indices for optimum management (B811) are maintained at the following NRES web site:

<https://www.ideals.illinois.edu/handle/2142/1027/>

** Indexes adjusted for slope and erosion according to Bulletin 811 Table S3

^b Soils in the southern region were not rated for oats and are shown with a zero "0".

^d Soils in the poorly drained group were not rated for alfalfa and are shown with a zero "0".

Soils data provided by USDA and NRCS. Soils data provided by University of Illinois at Champaign-Urbana.

*c: Using Capabilities Class Dominant Condition Aggregation Method