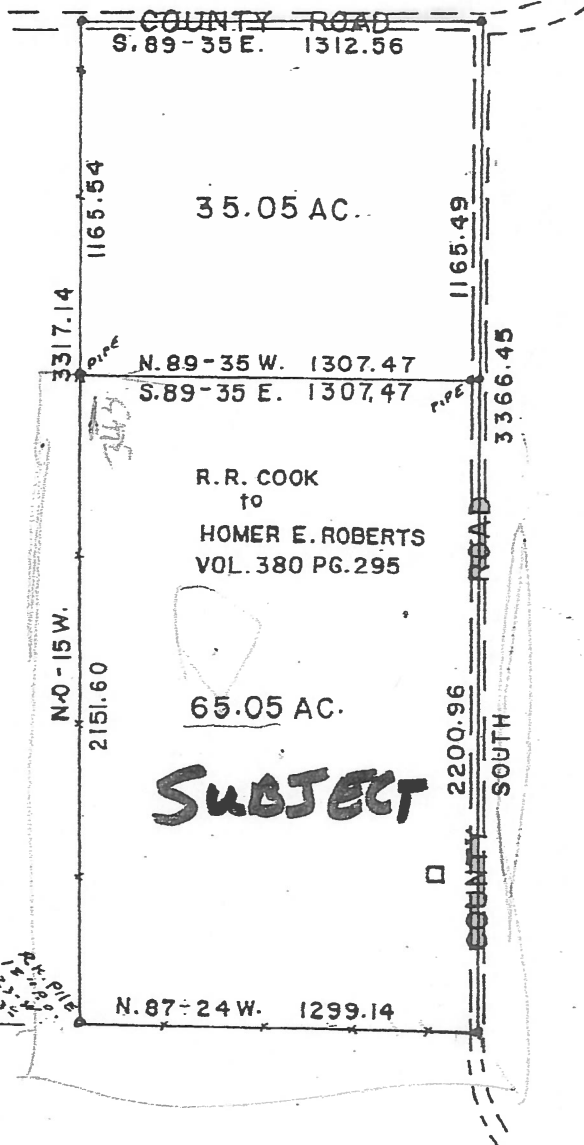


# "EXHIBIT A"

JOSE PINEDA SUR. A-56

EMERSON - RILEY  
VOL. 663 PG. 629



## SURVEY PLAT

Showing

PART OF THE JOSE PINEDA SUR. A-56  
ANDERSON CO. TEXAS.

SURVEYED DEC. 18, 1979 BY,

GARNETT L. BEARD R.P.S. NO. 1561

EXHIBIT "A"

All that certain tract or parcel of land containing 65.05 acres of land a part of the Jose Pineda Sur. A-56, Anderson Co. Texas, also a part of that certain 100 acre tract as described in a deed from R. R. Cook et. al. to Homer E. Roberts et. al. and recorded in vol. 380 pg. 295 of the deed records, and being more fully described by metes and bounds to-wit;

Beginning at a corner in the center of a county road at the South East corner of the above mentioned Roberts 100 acre tract.

Thence N. 87 deg. 24 min. W. a distance of 1299.14 ft. to a rock pile, a 12" P.O. brs. N. 23 deg. W. a distance of 23.00 ft.

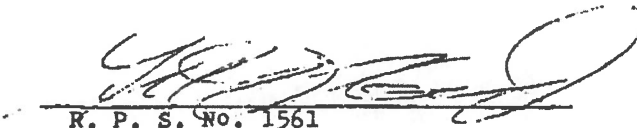
Thence N. 0 deg. 15 min. W. a distance of 2151.60 ft. to a pipe in the West line of the Roberts 100 acre tract.

Thence S. 89 deg. 35 min. E. a distance of 1307.47 ft. to a corner in the center of a county road, an 1" pipe in the West line of said road for wit.

Thence South a distance of 2200.96 ft. to the place of beginning, containing 65.05 acres of land, of which 1.00 acres are in the county road r.o.w.


I, Garnett L. Beard Registered Public surveyor No. 1561 do hereby certify the above field notes were prepared from an actual survey made by me on the ground during the month of Dec. 1979.

GIVEN UNDER MY HAND AND SEAL this 20 th. day of Dec. 1979.

  
R. P. S. No. 1561

RETURN TO  
ANDERSON COUNTY ABSTRACT

200501065

  
Filed for Record on 02/03/2005 at 10:16 AM RS  
Wanda Burke, County Clerk, Anderson County, Tx

V  
O  
L

1  
8  
9  
1

P  
G

0  
5  
6  
6