



# **Apostrophe 'C Ranch**

**495± Acres**

**Val Verde County | Comstock, TX**



**Presented By:**

**Caleb Matott, Broker/Owner**

**[RanchSpecialist@CMRanchRealEstate.com](mailto:RanchSpecialist@CMRanchRealEstate.com) | 432-349-3330**

# Ranch/Hunting Land - 495± Acres Val Verde County | Comstock, TX



Presented By:  
**Caleb Matott, Broker/Owner**  
432-349-3330  
[BigDogRanchSales@mac.com](mailto:BigDogRanchSales@mac.com)

## CM Ranch Real Estate

6800 W. County Rd. 48 | Midland, TX 79707 | 432-219-2220 | [RanchSpecialist@CMRanchRealEstate.com](mailto:RanchSpecialist@CMRanchRealEstate.com)  
[www.CMRanchRealEstate.com](http://www.CMRanchRealEstate.com)



### Property Details:

Approximate Building Sq. Ft.	900±
Lot Size:	495± Acres
Current Zoning:	No Restrictions
County:	Val Verde

### Property Overview:

The 495± acre Apostrophe 'C Ranch is located in beautiful Val Verde County just north of Comstock, TX. This superb Ranch consists of terrific land for hunting and/or recreational use as it is in excellent condition and bordered by a great quality perimeter fence. The water on the ranch is ideal as the water well is piped across the property providing suitable water sources for livestock and the abundance of wildlife.

The Apostrophe 'C Ranch has a 30'x60' barn with full living quarters that consist of 3 bedrooms/2.5 bath and is in outstanding condition. This remarkable Ranch is set up and ready to go. Contact Caleb Matott at 432-349-3330 for your private showing.

**Property Website**

**Property Video**



Presented By:  
**Caleb Matott, Broker/Owner**  
432-349-3330  
[BigDogRanchSales@mac.com](mailto:BigDogRanchSales@mac.com)

## CM Ranch Real Estate

6800 W. County Rd. 48 | Midland, TX 79707 | 432-219-2220 | [RanchSpecialist@CMRanchRealEstate.com](mailto:RanchSpecialist@CMRanchRealEstate.com)  
[www.CMRanchRealEstate.com](http://www.CMRanchRealEstate.com)





# Val Verde County | Comstock, TX - 495± Acres

## \$475,000.00



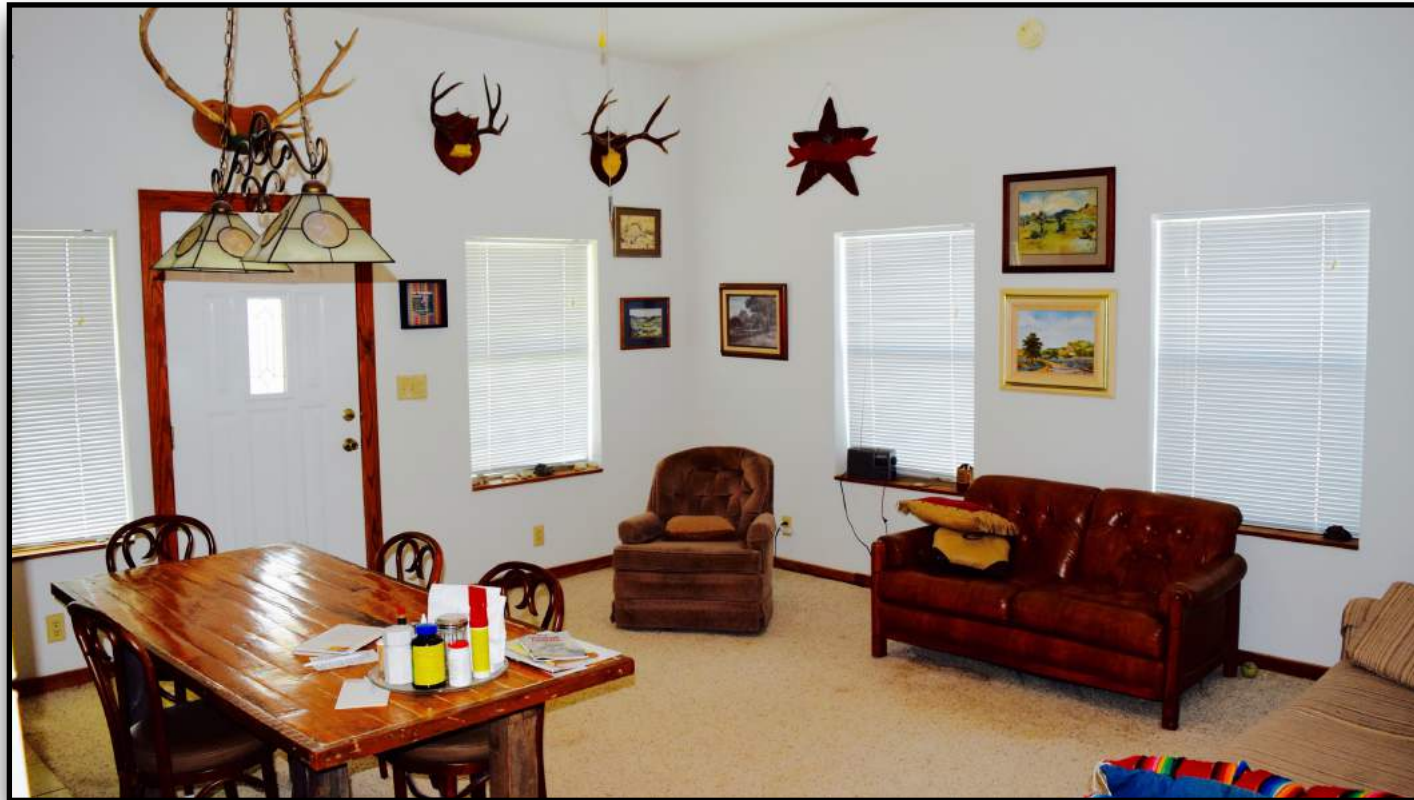
Presented By:  
**Caleb Matott, Broker/Owner**  
432-349-3330  
[BigDogRanchSales@mac.com](mailto:BigDogRanchSales@mac.com)

## CM Ranch Real Estate

6800 W. County Rd. 48 | Midland, TX 79707 | 432-219-2220 | [RanchSpecialist@CMRanchRealEstate.com](mailto:RanchSpecialist@CMRanchRealEstate.com)

[www.CMRanchRealEstate.com](http://www.CMRanchRealEstate.com)





Presented By:  
**Caleb Matott, Broker/Owner**  
432-349-3330  
[BigDogRanchSales@mac.com](mailto:BigDogRanchSales@mac.com)

**CM Ranch Real Estate**

6800 W. County Rd. 48 | Midland, TX 79707 | 432-219-2220 | [RanchSpecialist@CMRanchRealEstate.com](mailto:RanchSpecialist@CMRanchRealEstate.com)

[www.CMRanchRealEstate.com](http://www.CMRanchRealEstate.com)





# Val Verde County | Comstock, TX - 495± Acres

## \$475,000.00



Copyright © 2018 CM Ranch Real Estate. All Rights Reserved.

Presented By:  
**Caleb Matott, Broker/Owner**  
432-349-3330  
[BigDogRanchSales@mac.com](mailto:BigDogRanchSales@mac.com)

## CM Ranch Real Estate

6800 W. County Rd. 48 | Midland, TX 79707 | 432-219-2220 | [RanchSpecialist@CMRanchRealEstate.com](mailto:RanchSpecialist@CMRanchRealEstate.com)

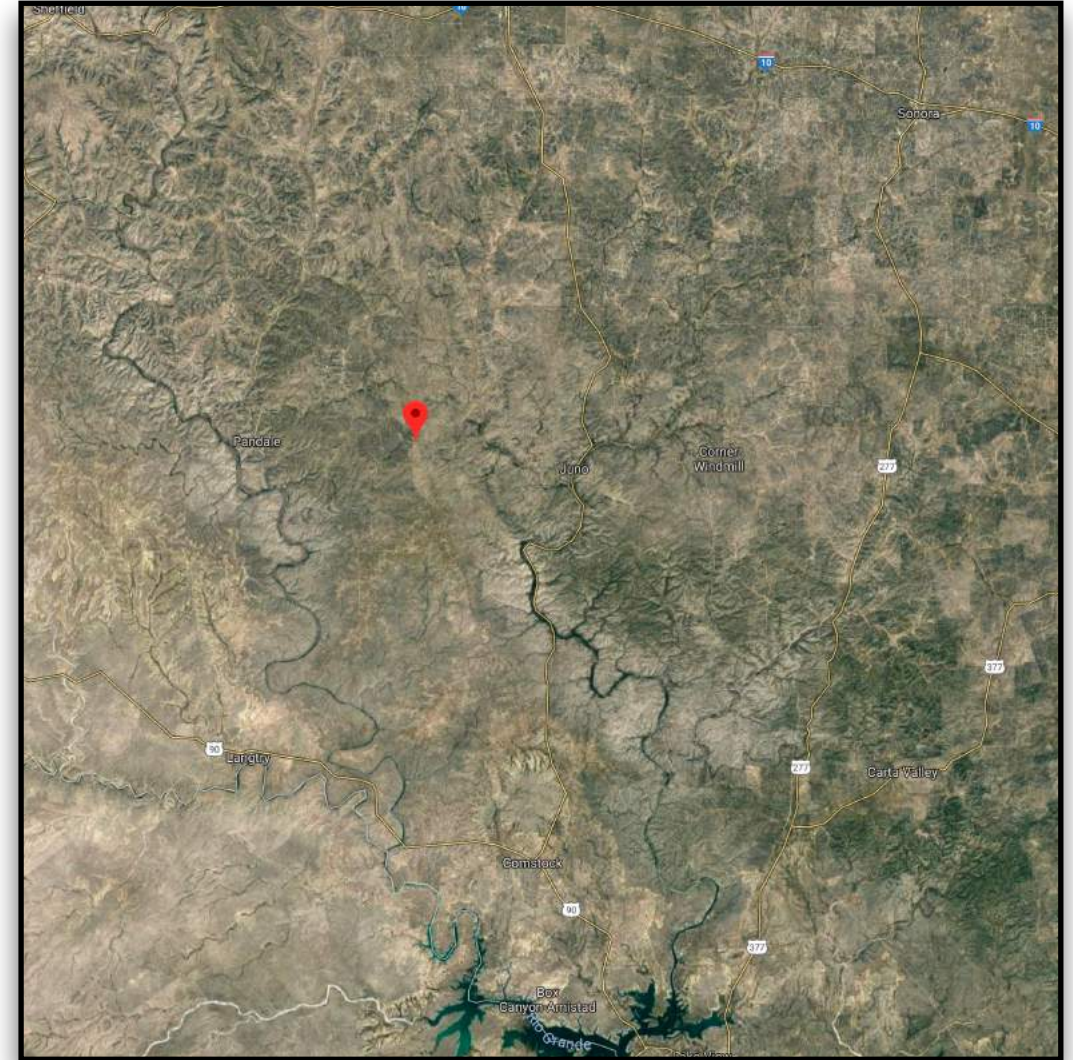
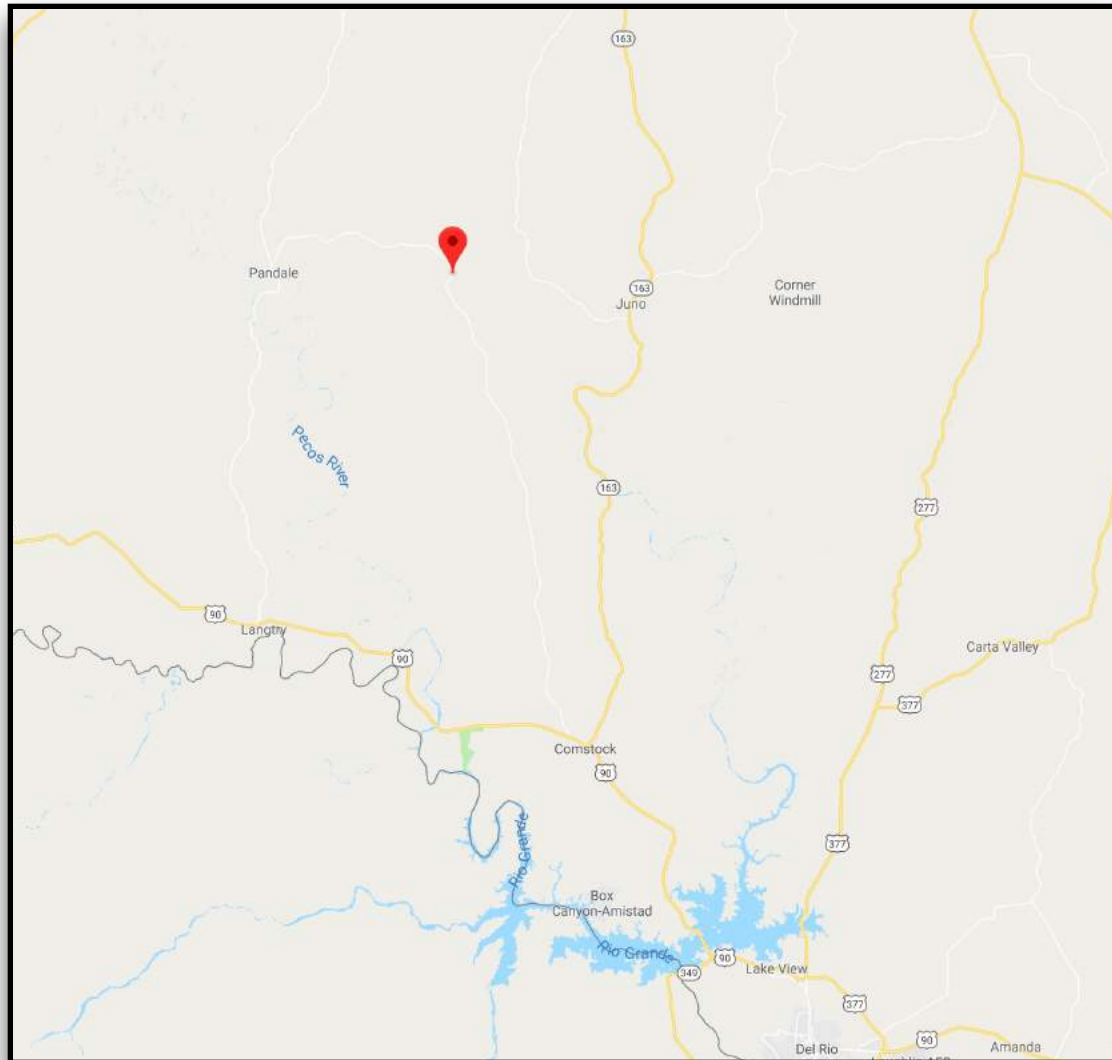
[www.CMRanchRealEstate.com](http://www.CMRanchRealEstate.com)





# Val Verde County | Comstock, TX - 495± Acres

## \$475,000.00



**Click for Interactive Property Map**

**Texas law requires all real estate licensees to give the following information about brokerage services to prospective buyers, tenants, sellers, & landlords.**

**Information About Brokerage Services**

**DISCLAIMER – This property offering is subject to prior sale, change in price, or removal from market without notice. While the information provided is deemed reliable, it is not guaranteed by Caleb Matott or CM Ranch Real Estate.**

Presented By:  
**Caleb Matott, Broker/Owner**  
432-349-3330  
[BigDogRanchSales@mac.com](mailto:BigDogRanchSales@mac.com)

**CM Ranch Real Estate**

6800 W. County Rd. 48 | Midland, TX 79707 | 432-219-2220 | [RanchSpecialist@CMRanchRealEstate.com](mailto:RanchSpecialist@CMRanchRealEstate.com)

[www.CMRanchRealEstate.com](http://www.CMRanchRealEstate.com)