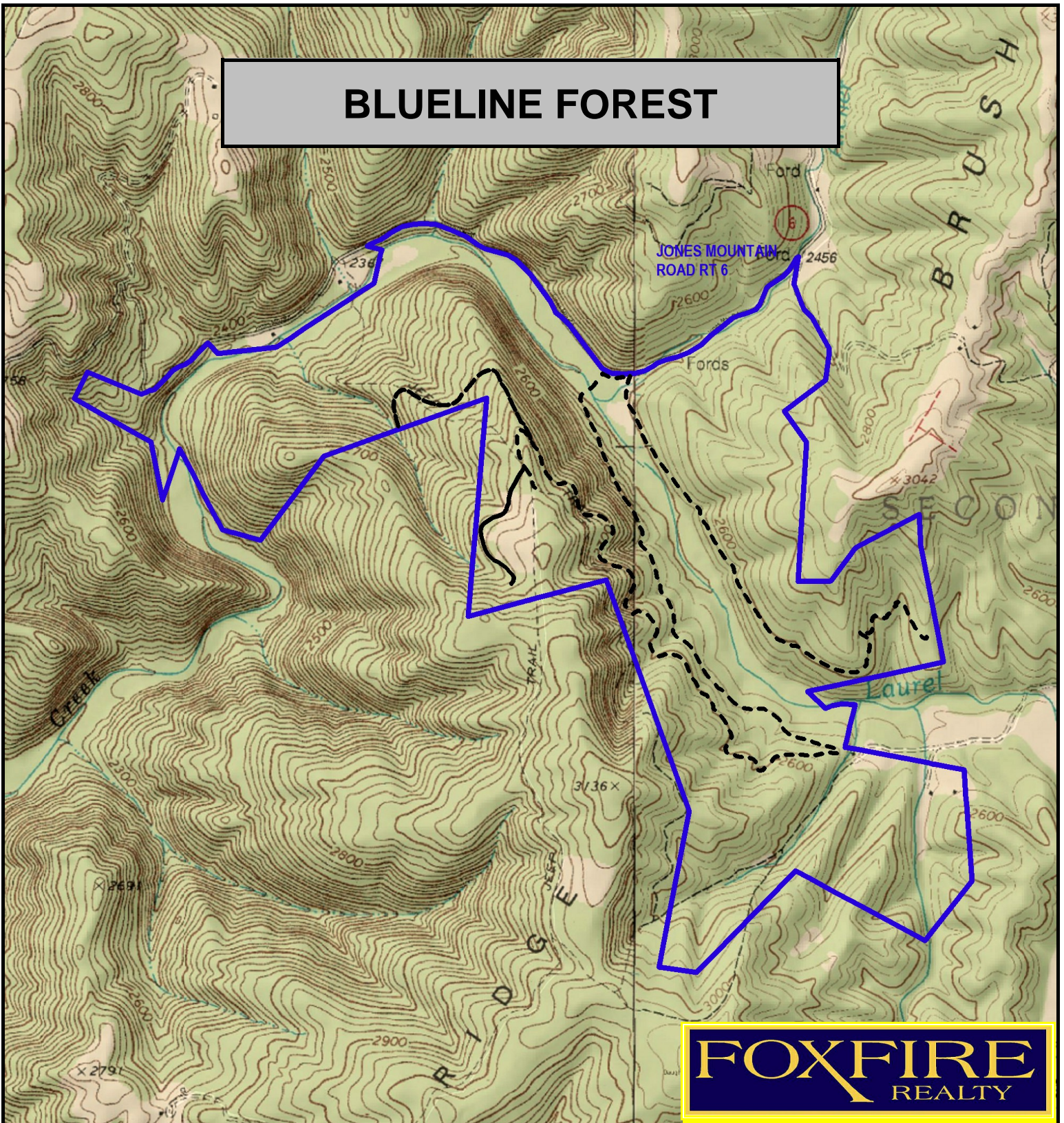
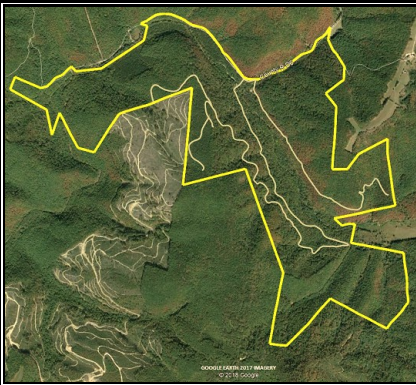


BLUELINE FOREST



FOXFIRE
REALTY



BLUELINE FOREST, Monroe County, WV (topographic map)
Elevation Range: 2296' - 2903' +/- Google Coordinates:
LAT 37.669073 (N), LON -80.376066 (W)
This map is for general location purposes only. Consult a licensed land
surveyor for actual boundary location and acreage.

RICHARD GRIST, Broker - Auctioneer - Forester
304.646.8837 Richard@Foxfirenation.com
WWW.FOXFIRENATION.COM

FOR TOPO MAP

SCALE 1:18000

1 INCH = 1,500 FT.

0 1000 2000 3000 4000 5000 6000
Feet

0 1
Mile

