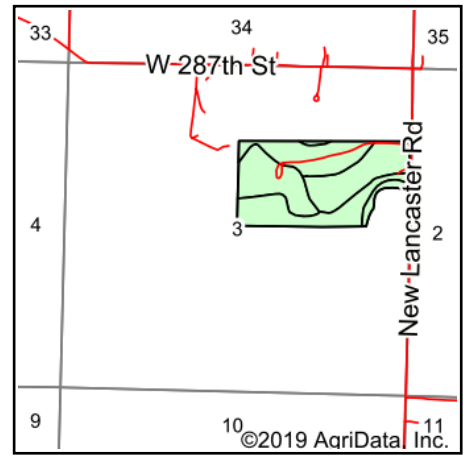
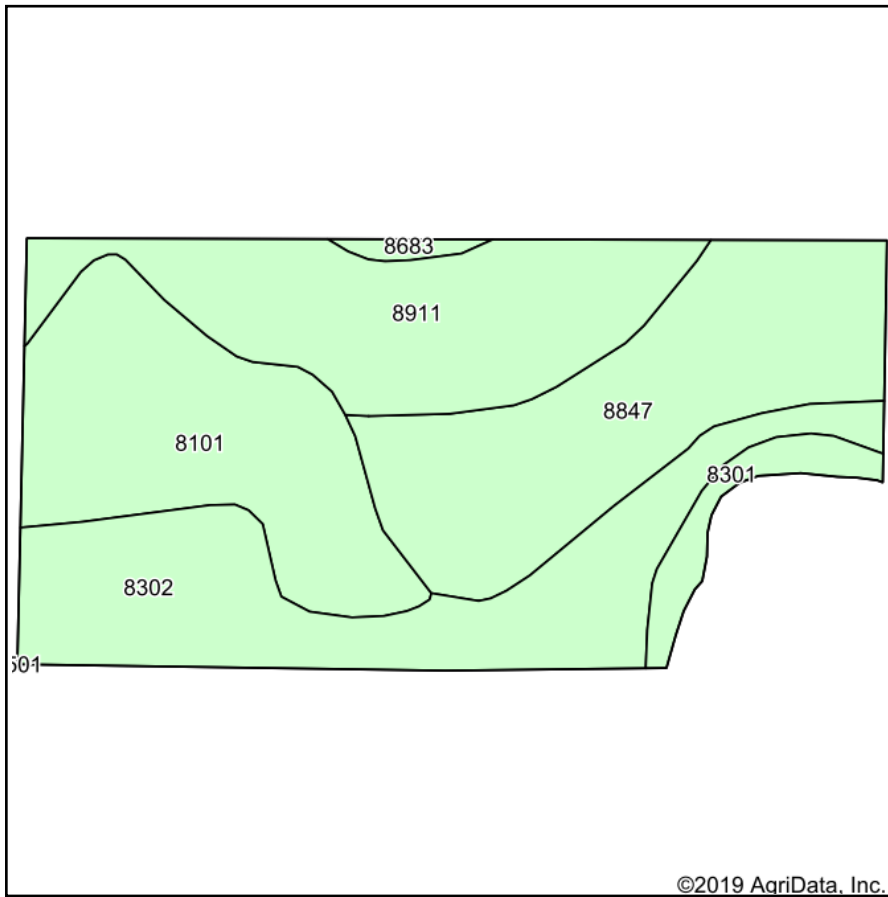


Soils Map



State: **Kansas**
 County: **Miami**
 Location: **3-17S-24E**
 Township: **Middle Creek**
 Acres: **72.44**
 Date: **7/30/2019**



Maps Provided By:
surety
 CUSTOMIZED ONLINE MAPPING
 © AgriData, Inc. 2019 www.AgriDataInc.com



Area Symbol: KS121. Soil Area Version: 19						
Cod e	Soil Description	Acres	Percent of field	Non-Irr Class *c	Range Production (lbs/acre/yr)	*n NCCPI Soybeans
8847	Okemah silt loam, 0 to 3 percent slopes	18.84	26.0%	Is	5380	66
8302	Verdigris silt loam, 0 to 1 percent slopes, occasionally flooded	17.90	24.7%	IIw	7758	79
8101	Hepler silt loam, 0 to 2 percent slopes, occasionally flooded	16.52	22.8%	IIw	8100	80
8911	Summit silty clay loam, 1 to 3 percent slopes	16.10	22.2%	Ile	4828	61
8301	Verdigris silt loam, 0 to 1 percent slopes, frequently flooded	2.54	3.5%	Vw	8048	51
8683	Dennis silt loam, 3 to 7 percent slopes	0.54	0.7%	IIIe	5048	64
Weighted Average					6556.3	*n 70.8

*n: The aggregation method is "Weighted Average using major components"

*c: Using Capabilities Class Dominant Condition Aggregation Method

Soils data provided by USDA and NRCS.