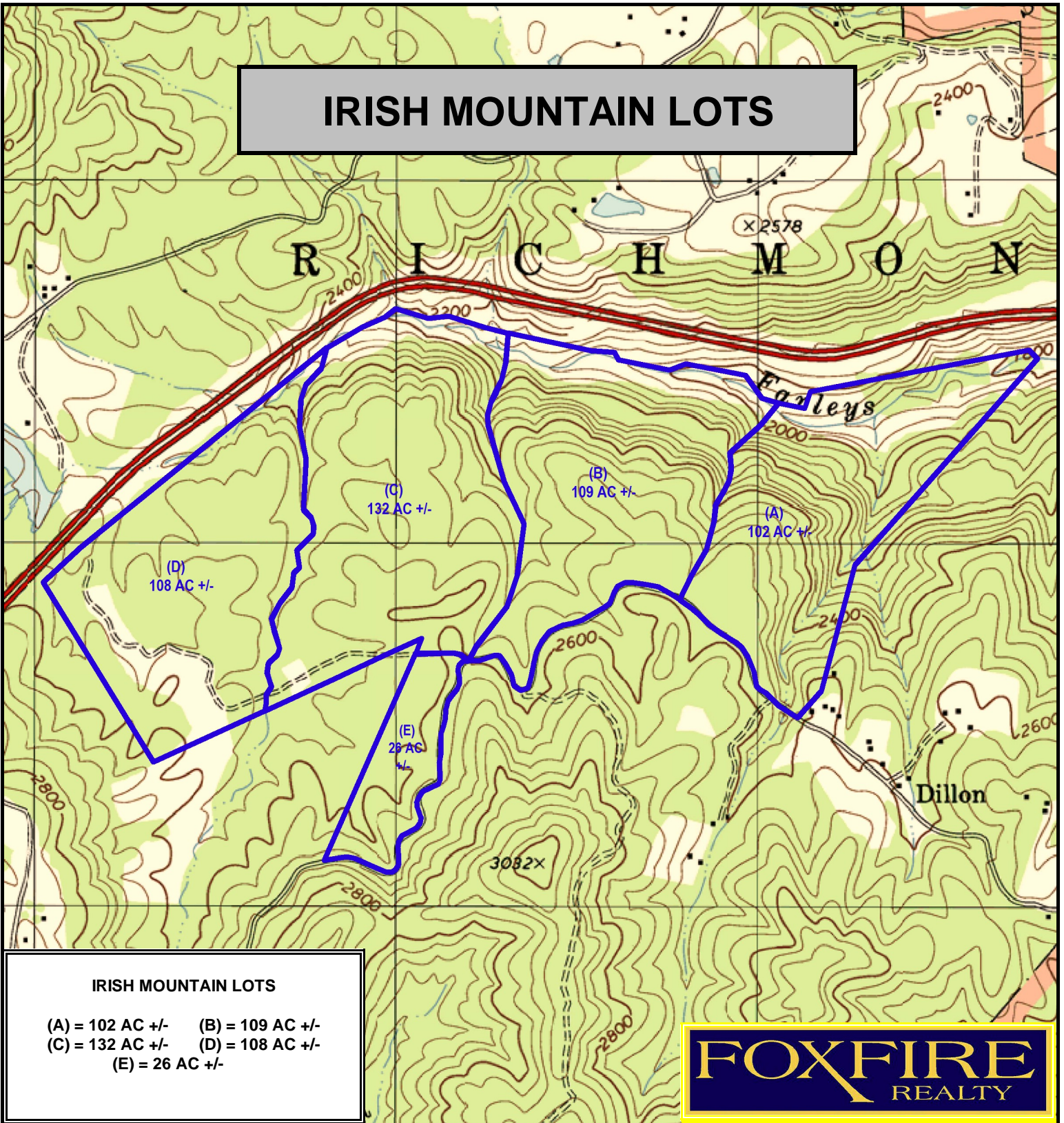


# IRISH MOUNTAIN LOTS



## IRISH MOUNTAIN LOTS

(A) = 102 AC +/-    (B) = 109 AC +/-  
 (C) = 132 AC +/-    (D) = 108 AC +/-  
 (E) = 26 AC +/-

**FOXFIRE**  
 REALTY

IRISH MOUNTAIN LOTS, Raleigh County, WV  
 (topographic map)  
 Elevation Range: 1792' - 2652' +/-; Google Coordinates:  
 LAT 37.768150 (N), LON -80.966009 (W)  
 This map is for general location purposes only. Consult a  
 licensed land surveyor for actual boundary location and  
 acreage.

RICHARD GRIST, Broker - Auctioneer - Forester  
 304.646.8837 Richard@Foxfirenation.com  
 WWW.FOXFIRENATION.COM



FOR TOPO

SCALE 1:14400

1 INCH = 1,200 FT.

