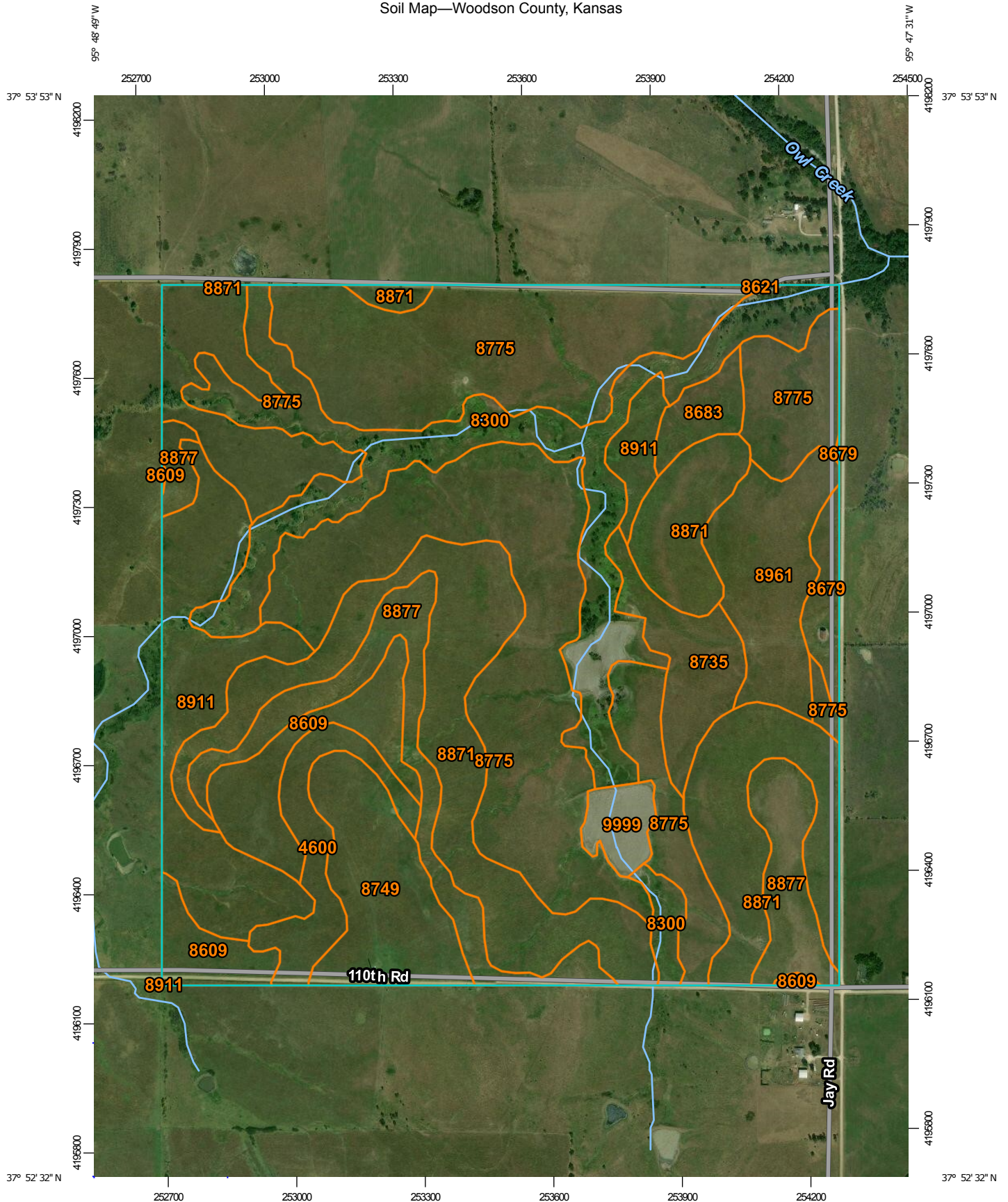
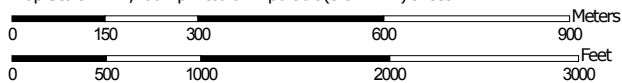


Soil Map—Woodson County, Kansas



Map Scale: 1:12,200 if printed on A portrait (8.5" x 11") sheet.



Map projection: Web Mercator Corner coordinates: WGS84 Edge tics: UTM Zone 15N WGS84



**Natural Resources
Conservation Service**

Web Soil Survey
National Cooperative Soil Survey

9/17/2018
Page 1 of 3

Map Unit Legend

Map Unit Symbol	Map Unit Name	Acres in AOI	Percent of AOI
4600	Dwight silt loam, 0 to 1 percent slopes	16.8	2.6%
8300	Verdigris silt loam, channeled, 0 to 2 percent slopes, frequently flooded	74.8	11.7%
8609	Aliceville silty clay loam, 1 to 3 percent slopes	29.2	4.6%
8621	Bates loam, 1 to 3 percent slopes	0.1	0.0%
8679	Dennis silt loam, 1 to 3 percent slopes	7.3	1.1%
8683	Dennis silt loam, 3 to 7 percent slopes	7.4	1.2%
8735	Eram silty clay loam, 3 to 7 percent slopes	17.8	2.8%
8749	Eram-Collinsville complex, 5 to 15 percent slopes	30.8	4.8%
8775	Kenoma silt loam, 1 to 3 percent slopes	211.5	33.2%
8871	Ringo silty clay loam, 3 to 8 percent slopes	112.4	17.6%
8877	Ringo-Sogn complex, 5 to 15 percent slopes	45.4	7.1%
8911	Summit silty clay loam, 1 to 3 percent slopes	49.1	7.7%
8961	Woodson silt loam, 0 to 1 percent slopes	28.5	4.5%
9999	Water	7.0	1.1%
Totals for Area of Interest		638.1	100.0%