

# PROPERTY FOR SALE

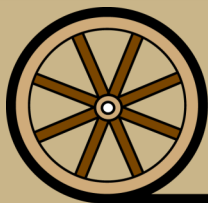
## Hershey Ranchette



- Location:** From Hershey I-80 Interchange, South 1/8 mile, then 2-1/2 miles east on West Oregon Trail Rd.
- Legal Description:** Pt. of S1/2S1/2 Sect. 35-T14N-R32W (lying south of I-80) of the 6th P.M., Lincoln County, NE
- Acres:** 13.48 tax assessed acres
- Taxes:** 2018 taxes payable in 2019 - \$1,218.82
- Improvements:** Nice 2-bdrm., 2 bathroom remodeled house with 2 car unattached garage, barn & open front shed. Brand new above ground septic system.
- Price:** \$130,000
- Comments:** Excellent property with house and outbuildings within Hershey School District. Good pasture for horses, 4-H livestock.
- Contact:** **Mike Polk; Listing Agent** — 308-539-4446 or [mike@agriaffiliates.com](mailto:mike@agriaffiliates.com)  
John Childears, Chase Dodson, Bruce Dodson, Don Walker, Brian Reynolds, Tony Eggleston, Roger Luehrs, Brad Atkins



**Mike Polk,**  
*Listing Agent*



*Offered Exclusively By:*

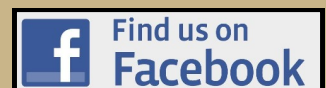
**AGRI AFFILIATES, INC.**  
*Providing Farm - Ranch Real Estate Services*

Information contained herein was obtained from sources deemed reliable. We have no reason to doubt the accuracy, but the information is not guaranteed. Prospective Buyers should verify all information. All maps provided by Agri Affiliates, Inc. are approximations only, to be used as a general guideline, and not intended as survey accurate. As with any agricultural land, this property may include noxious weeds. Agri Affiliates, Inc. and all agents are acting as Agent of the Seller.

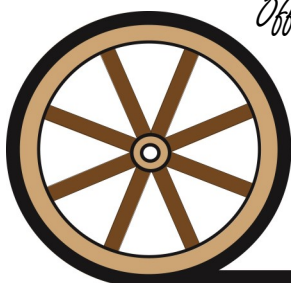
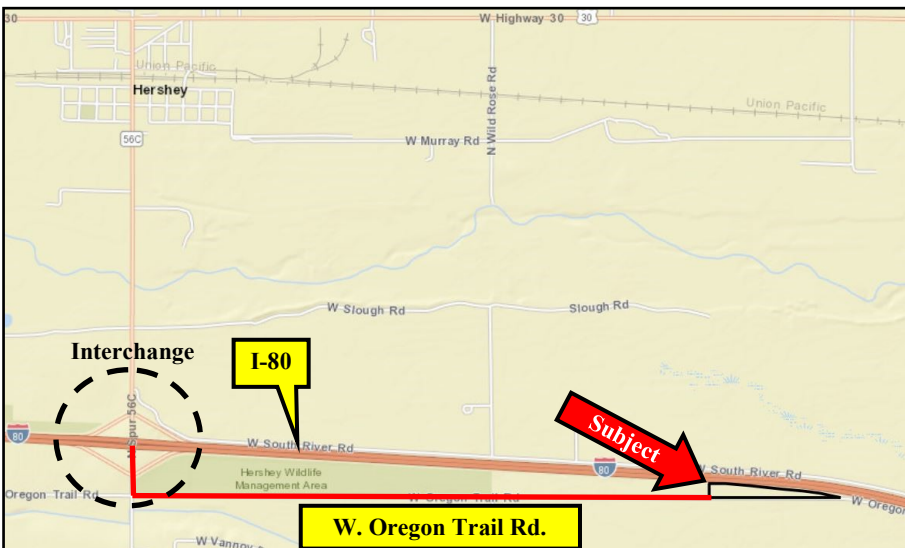
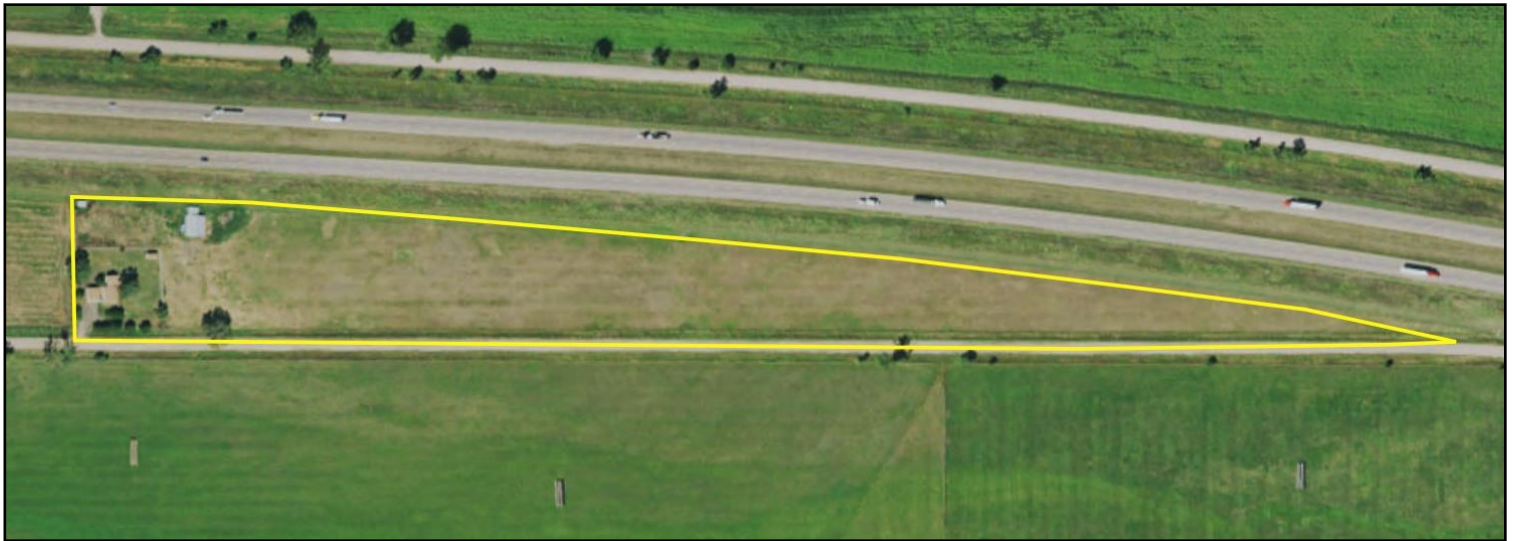
**NORTH PLATTE OFFICE**  
P.O. Box 1166  
I-80 & US Hwy 83  
North Platte, NE 69103  
[www.agriaffiliates.com](http://www.agriaffiliates.com)

**(308) 534-9240**

Fax (308) 534-9244







*Offered Exclusively By:*

[www.agriaffiliates.com](http://www.agriaffiliates.com)

**AGRI AFFILIATES, INC.**  
*Providing Farm - Ranch Real Estate Services*