



Real Estate Sales Specialists

Setting the trend for how Real Estate is sold in the Midwest.

www.BarnesRealty.com

**18156 Hwy 59
Mound City, MO 64470
(660) 442-3177**

**1711 Oregon
Hiawatha, KS 66434
(785) 742-4580**

**1708 Prairie View Rd, Suite B
Platte City, MO 64079
(816) 219-3010**

I-29 Dodge Chrysler Dealership 1011 State Street, Mound City, MO 64470

Location! Location! Location! Visible from the Interstate first stop right off of I-29! This multi-purpose Commercial zoned building could be used for anything from a car dealership, tire shop, office facility, farm and home store you name it! Huge building with room to grow on its maintained approx. 3.44 acre property!

LOCATION:

Located halfway between Omaha, NE & Kansas City, MO. just approx. 37 miles North of St. Joseph, MO.
Take I-29 Northbound to Mound City exit #84.

PRICE:

~~\$750,000.00~~

PRICE REDUCED! \$600,000.00

IMPROVEMENTS:

Huge asphalt parking lot
Huge electric overhead doors
Lighted shop area
Multiple office spaces
Commercial entry doors/windows

BUILD DATE:

1980

LOT SIZE:

Approx. 3.44 acres

TAXES:

2018 taxes were \$3,607.83 on 3.44 acres.

RENTAL STATUS:

Available for possession at time of closing.

LISTING AGENT:

Billie Paul Sharp

(660) 572-0029 or bpsharp@barnesrealty.com

BROKER PARTICIPATION:

Barnes Realty Company, as listing Broker, will gladly and fully cooperate with most licensed Real Estate Brokers to obtain a sale of the property on terms satisfactory to the current Owners. Brokers should call our office for details of our Co-Brokerage Policy.

Setting the trend for how Real Estate is sold in the Midwest.

This information is thought to be accurate; however, it is subject to verification and no liability for error and omissions is assumed. Barnes Realty has made every effort to present accurate information on the property presented. Most of the information comes from outside sources: County/Government/Seller and human error can occur. It's the Buyer's responsibility to satisfy himself with the information presented and to determine the information to be true and accurate and the property to be suited for his intended use. The listing may be withdrawn with or without approval. The Seller further reserves the right to reject any and all offers.

All inquiries, inspections, appointments, and offers must be sent through:

RICK BARNES, BROKER, BARNES REALTY COMPANY, 18156 HWY 59, MOUND CITY, MO 64470 PHONE NUMBER: 1-660-442-3177.



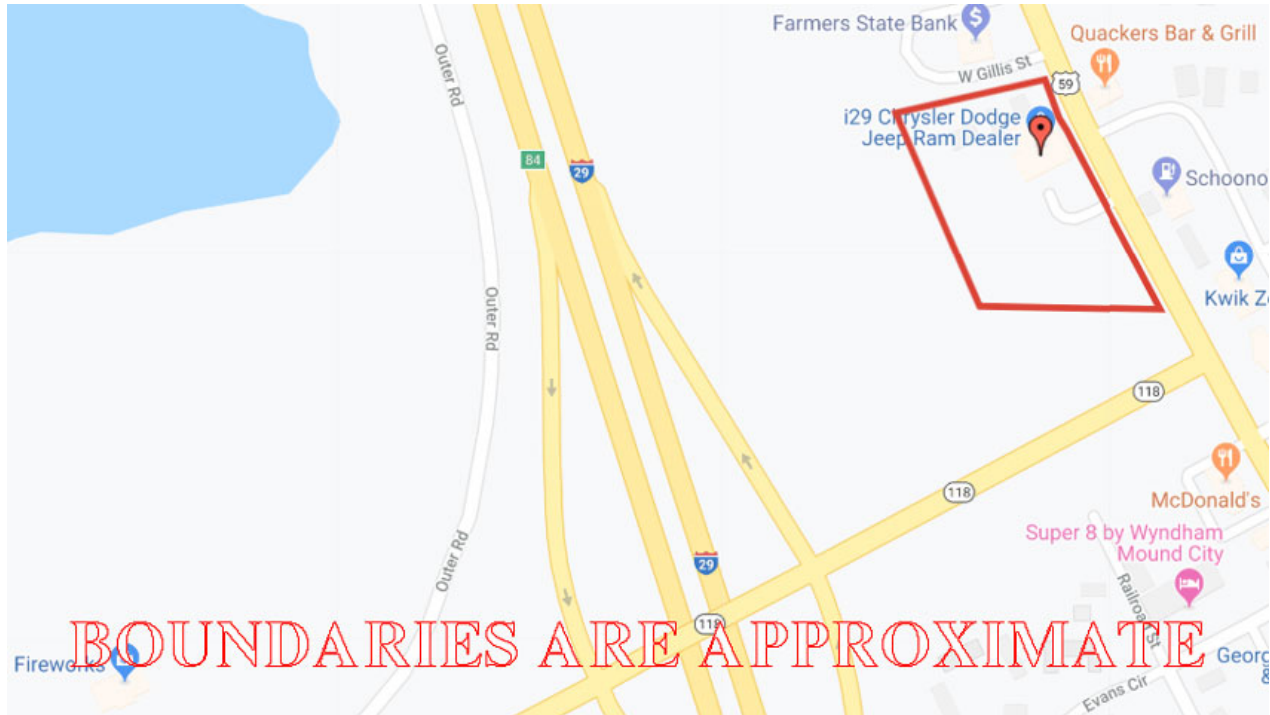
***I-29 Dodge Chrysler Dealership
1011 State Street, Mound City, MO 64470
Google Aerial***



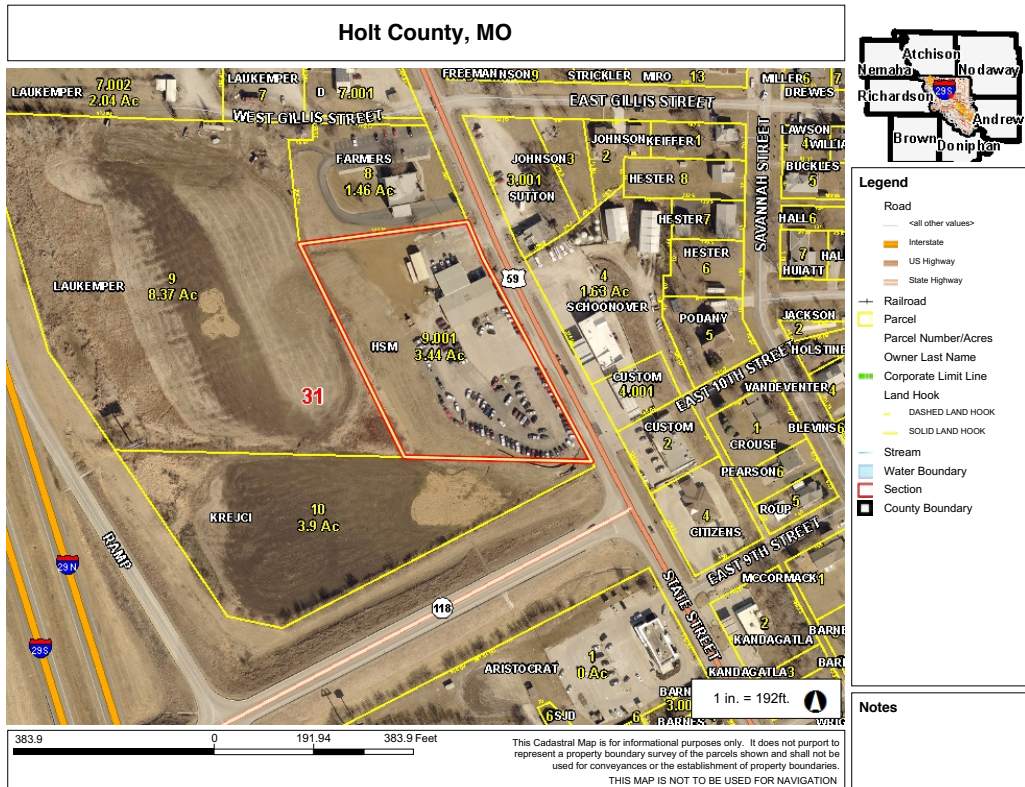
General Location



***I-29 Dodge Chrysler Dealership
1011 State Street, Mound City, MO 64470
Driving Map***



Tax Map



PHOTOS PROVIDED BY: RICK BARNES, BROKER, BARNES REALTY COMPANY, 18156 HWY 59, MOUND CITY, MO 64470 PHONE NUMBER: 1-660-442-3177.

***I-29 Dodge Chrysler Dealership
1011 State Street, Mound City, MO 64470
Aerial Photos***



***I-29 Dodge Chrysler Dealership
1011 State Street, Mound City, MO 64470***



***I-29 Dodge Chrysler Dealership
1011 State Street, Mound City, MO 64470***



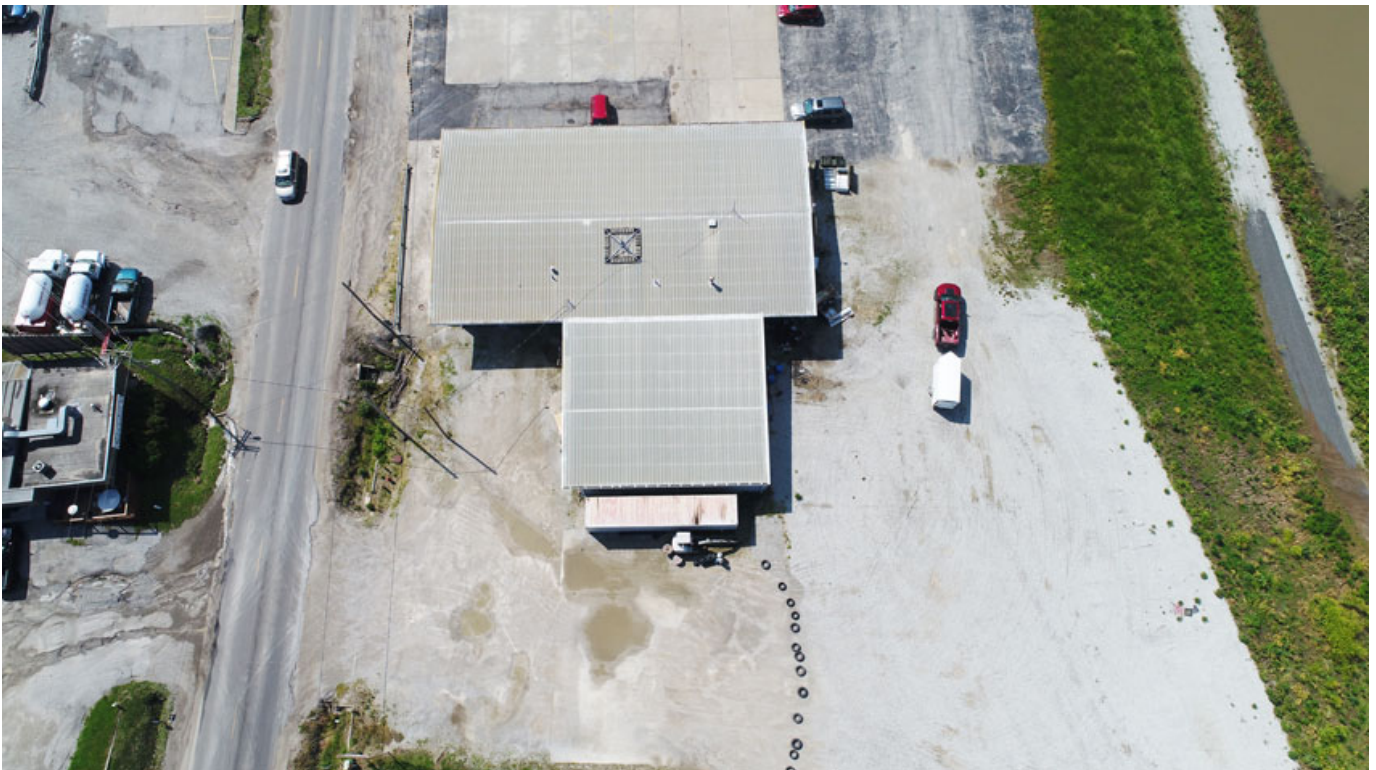
***I-29 Dodge Chrysler Dealership
1011 State Street, Mound City, MO 64470***



***I-29 Dodge Chrysler Dealership
1011 State Street, Mound City, MO 64470***



***I-29 Dodge Chrysler Dealership
1011 State Street, Mound City, MO 64470***



***I-29 Dodge Chrysler Dealership
1011 State Street, Mound City, MO 64470
PHOTOS***



***I-29 Dodge Chrysler Dealership
1011 State Street, Mound City, MO 64470***



***I-29 Dodge Chrysler Dealership
1011 State Street, Mound City, MO 64470***

