

NAI Columbia

For Sale
±2.51 Acres
Commercial Land



Columbia Avenue

Chapin, South Carolina

Tombo Milliken

Direct: +1 803 744 9852
Cell: +1 803 206 8384
tombo.milliken@naicolumbia.com

Tom Milliken

Direct: +1 803 744 9837
Cell: +1 803 331 6999
tmilliken@naicolumbia.com

Property Features

- ±2.51 Acres in Chapin
- Water and sewer available
- Road Frontage: ±200' (Columbia Ave)
- Zoning: General Commercial
- Traffic Count 2018 (Station 477): 13,800 VPD
- Sales Price: \$1,600,000

THE INFORMATION CONTAINED HEREIN HAS BEEN GIVEN TO US BY THE OWNER OF THE PROPERTY OR OTHER SOURCES WE DEEM RELIABLE. WE HAVE NO REASON TO DOUBT ITS ACCURACY, BUT WE DO NOT GUARANTEE IT. ALL INFORMATION SHOULD BE VERIFIED PRIOR TO PURCHASE OR LEASE.

807 Gervais Street, Suite 200
Columbia, South Carolina 29201
+1 803.254.0100
www.naicolumbia.com

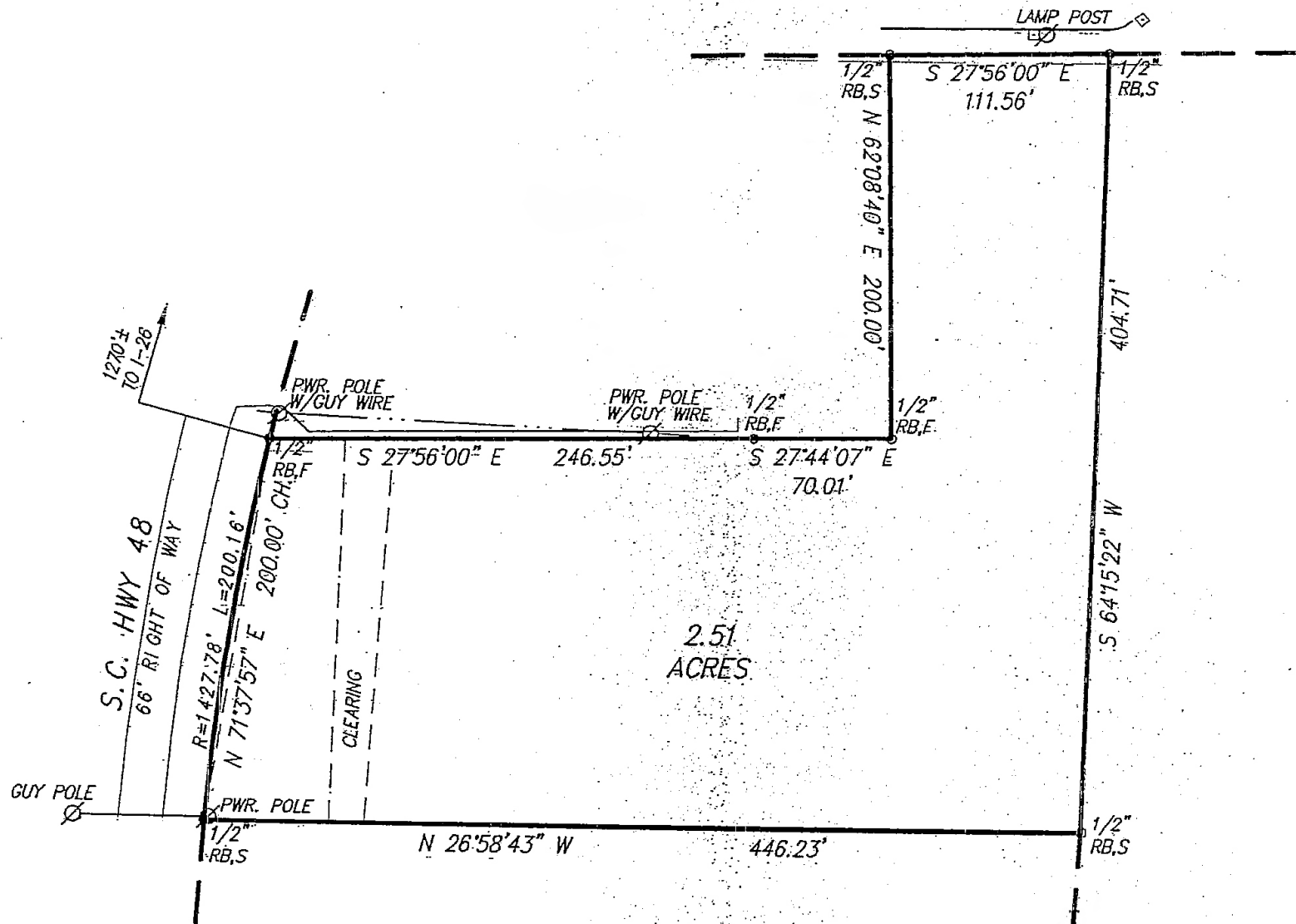
Plat

Columbia Avenue, Chapin, South Carolina

For Sale

±2.51 Acres

Commercial Land



THE INFORMATION CONTAINED HEREIN HAS BEEN GIVEN TO US BY THE OWNER OF THE PROPERTY OR OTHER SOURCES WE DEEM RELIABLE. WE HAVE NO REASON TO DOUBT ITS ACCURACY, BUT WE DO NOT GUARANTEE IT. ALL INFORMATION SHOULD BE VERIFIED PRIOR TO PURCHASE OR LEASE.

807 Gervais Street, Suite 200
Columbia, South Carolina 29201
+1 803.254.0100
www.naicolumbia.com

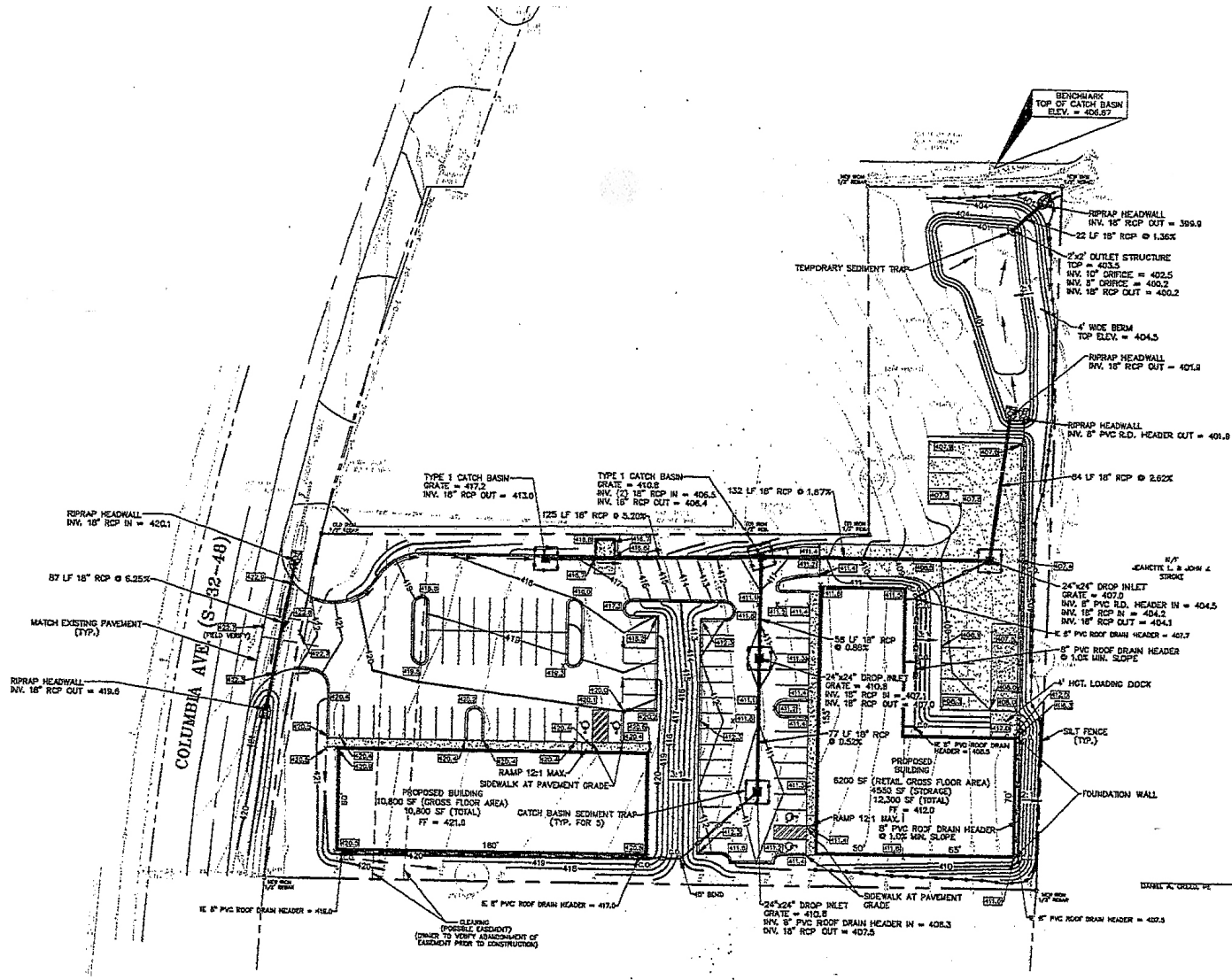
Site Map

Columbia Avenue, Chapin, South Carolina

For Sale

±2.51 Acres

Commercial Land



THE INFORMATION CONTAINED HEREIN HAS BEEN GIVEN TO US BY THE OWNER OF THE PROPERTY OR OTHER SOURCES WE DEEM RELIABLE. WE HAVE NO REASON TO DOUBT ITS ACCURACY, BUT WE DO NOT GUARANTEE IT. ALL INFORMATION SHOULD BE VERIFIED PRIOR TO PURCHASE OR LEASE.

807 Gervais Street, Suite 200
Columbia, South Carolina 29201
+1 803.254.0100
www.naicolumbia.com

Location

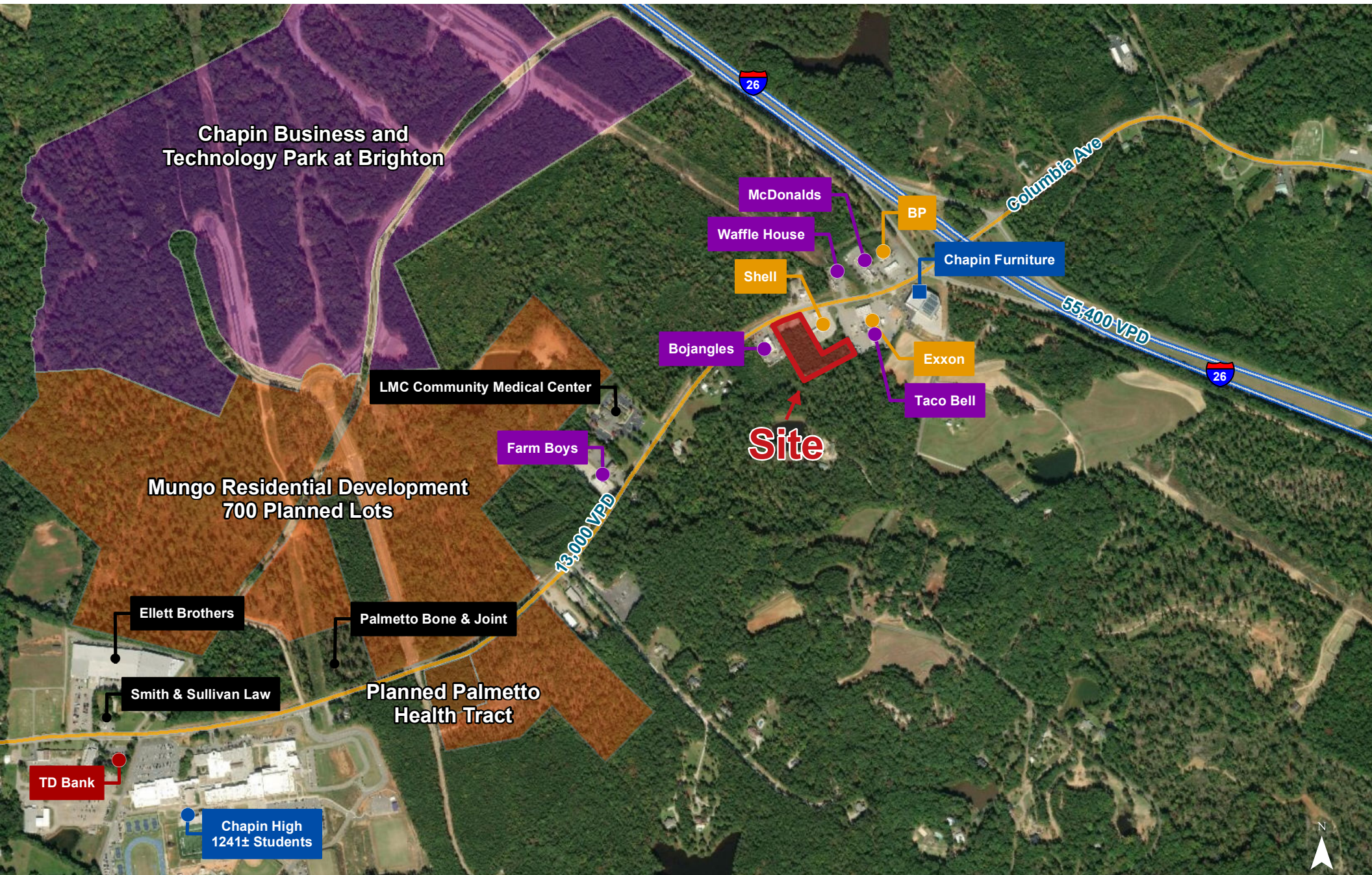


Map Updated: Thursday, March 14, 2019. This information submitted is not guaranteed. Although obtained from reliable sources, all information should be confirmed prior to use or reliance upon the information. This document may not be reproduced in whole or in part without the express written consent of NAI Avant.



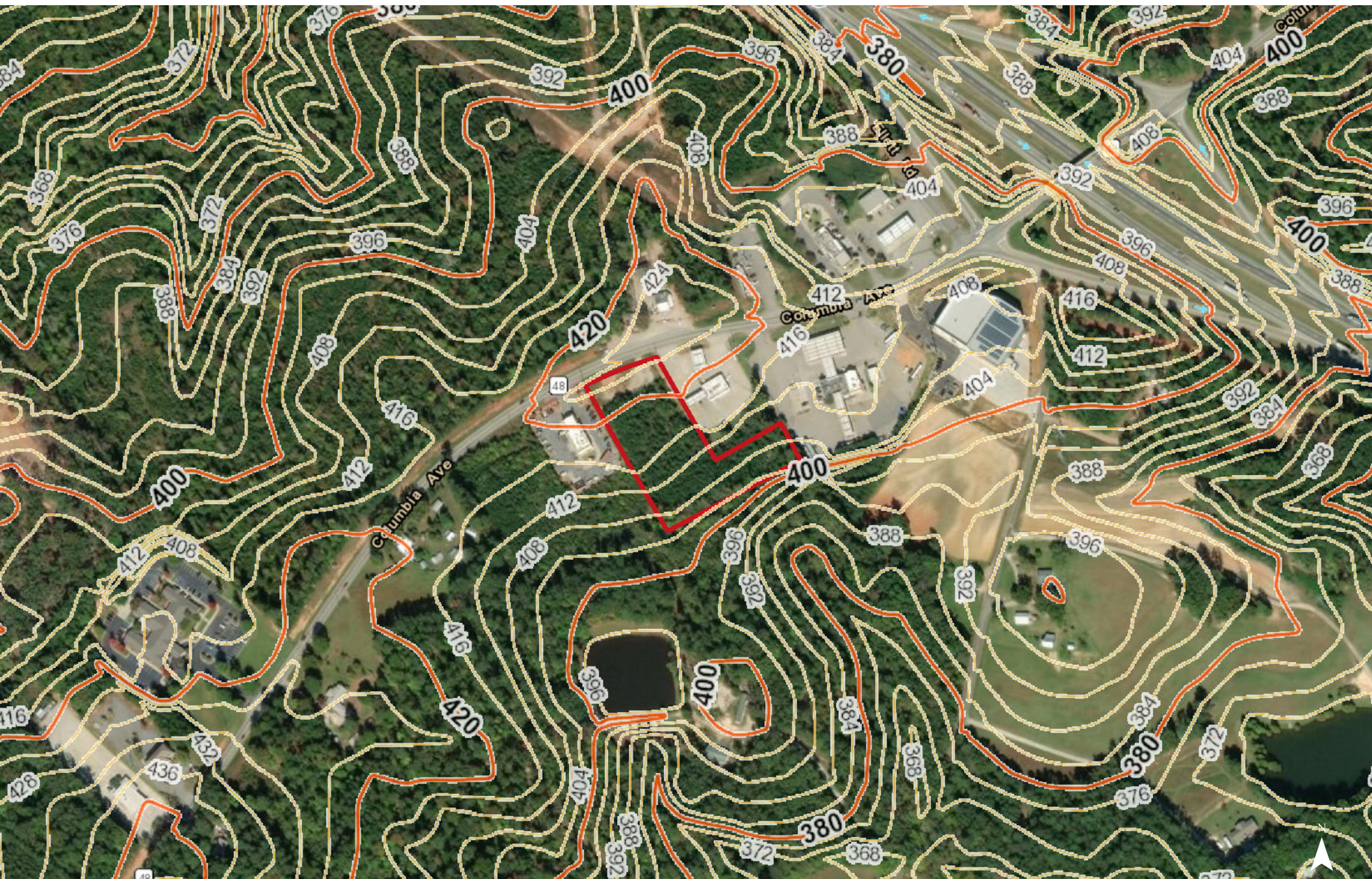
Map Updated: Thursday, March 14, 2019. This information submitted is not guaranteed. Although obtained from reliable sources, all information should be confirmed prior to use or reliance upon the information. This document may not be reproduced in whole or in part without the express written consent of NAI Avant.

Points of Interest



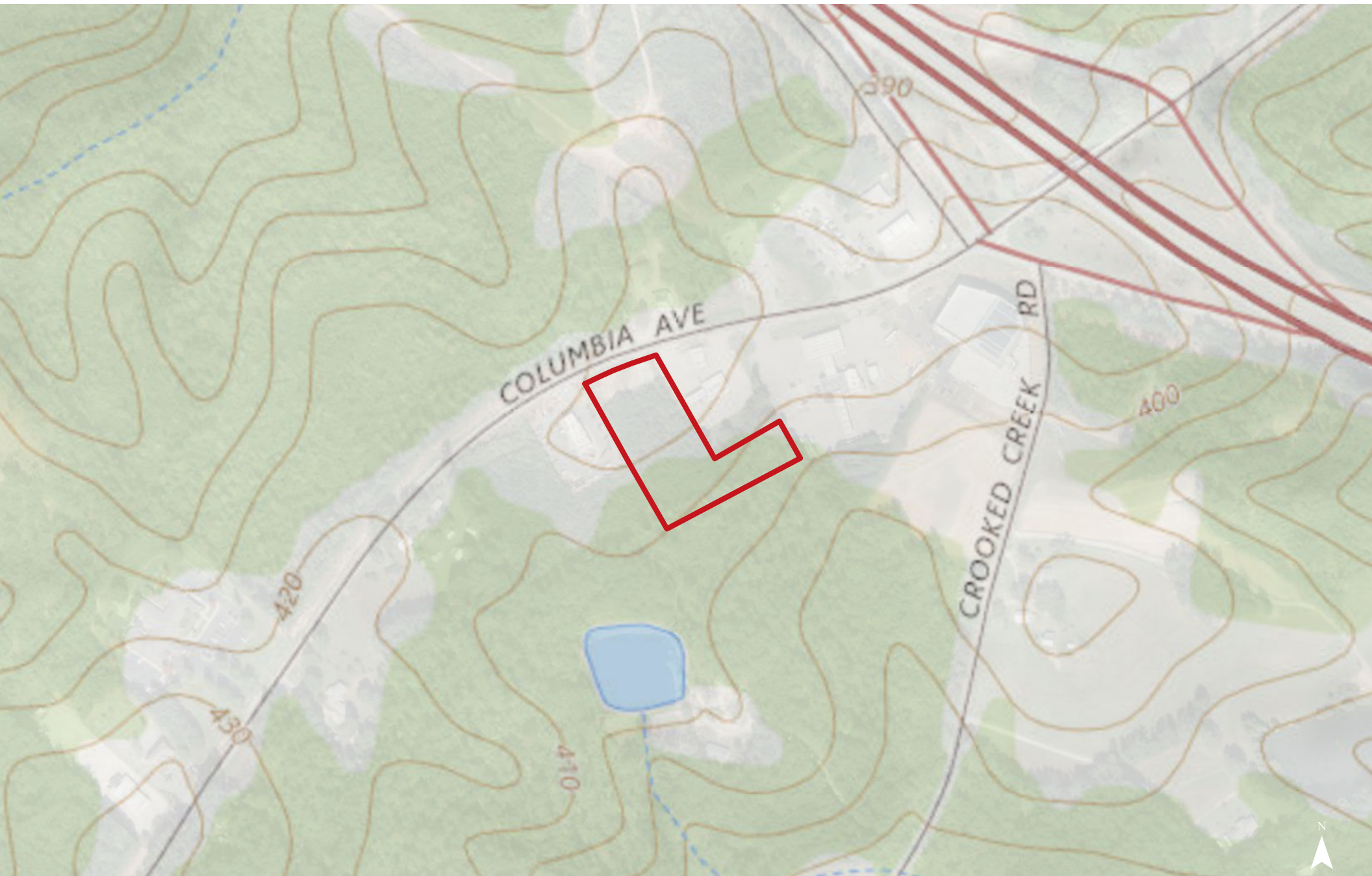
Map Updated: Thursday, March 14, 2019. This information submitted is not guaranteed. Although obtained from reliable sources, all information should be confirmed prior to use or reliance upon the information. This document may not be reproduced in whole or in part without the express written consent of NAI Avant.

Topographical Map: 4' Contours



Map Updated: Thursday, March 14, 2019. This information submitted is not guaranteed. Although obtained from reliable sources, all information should be confirmed prior to use or reliance upon the information. This document may not be reproduced in whole or in part without the express written consent of NAI Avant.

Topographical Map



Map Updated: Thursday, March 14, 2019. This information submitted is not guaranteed. Although obtained from reliable sources, all information should be confirmed prior to use or reliance upon the information. This document may not be reproduced in whole or in part without the express written consent of NAI Avant.



Map Updated: Thursday, March 14, 2019. This information submitted is not guaranteed. Although obtained from reliable sources, all information should be confirmed prior to use or reliance upon the information. This document may not be reproduced in whole or in part without the express written consent of NAI Avant.

Soil Survey



Map Updated: Thursday, March 14, 2019. This information submitted is not guaranteed. Although obtained from reliable sources, all information should be confirmed prior to use or reliance upon the information. This document may not be reproduced in whole or in part without the express written consent of NAI Avant.

Map Unit Description (Brief, Generated)

Lexington County, South Carolina

[Minor map unit components are excluded from this report]

Map unit: EnB - Enon silt loam, 2 to 6 percent slopes

Component: Enon (100%)

The Enon component makes up 100 percent of the map unit. Slopes are 2 to 6 percent. This component is on hillslopes on uplands. The parent material consists of clayey residuum weathered from mixed acid and basic igneous rock. Depth to a root restrictive layer, bedrock, paralithic, is 24 to 48 inches. The natural drainage class is well drained. Water movement in the most restrictive layer is moderately low. Available water to a depth of 60 inches is low. Shrink-swell potential is high. This soil is not flooded. It is not ponded. There is no zone of water saturation within a depth of 72 inches. Organic matter content in the surface horizon is about 2 percent. Nonirrigated land capability classification is 3e. This soil does not meet hydric criteria.

Map unit: GeB - Georgeville very fine sandy loam, 2 to 6 percent slopes

Component: Georgeville (100%)

The Georgeville component makes up 100 percent of the map unit. Slopes are 2 to 6 percent. This component is on hillslopes on uplands. The parent material consists of clayey residuum weathered from slate. Depth to a root restrictive layer is greater than 60 inches. The natural drainage class is well drained. Water movement in the most restrictive layer is moderately high. Available water to a depth of 60 inches is moderate. Shrink-swell potential is low. This soil is not flooded. It is not ponded. There is no zone of water saturation within a depth of 72 inches. Organic matter content in the surface horizon is about 2 percent. Nonirrigated land capability classification is 2e. This soil does not meet hydric criteria.

Map unit: HrB - Herndon silt loam, 2 to 6 percent slopes

Component: Herndon (100%)

The Herndon component makes up 100 percent of the map unit. Slopes are 2 to 6 percent. This component is on hillslopes on uplands. The parent material consists of clayey residuum weathered from slate. Depth to a root restrictive layer is greater than 60 inches. The natural drainage class is well drained. Water movement in the most restrictive layer is moderately high. Available water to a depth of 60 inches is moderate. Shrink-swell potential is low. This soil is not flooded. It is not ponded. There is no zone of water saturation within a depth of 72 inches. Organic matter content in the surface horizon is about 0 percent. Nonirrigated land capability classification is 2e. This soil does not meet hydric criteria.

Map Unit Description (Brief, Generated)

Lexington County, South Carolina

Map unit: W - Water

Component: Water (100%)

Generated brief soil descriptions are created for major soil components. The Water is a miscellaneous area.