



Logan County, ND
FARM LAND FOR SALE
1676.47 +/- Acres



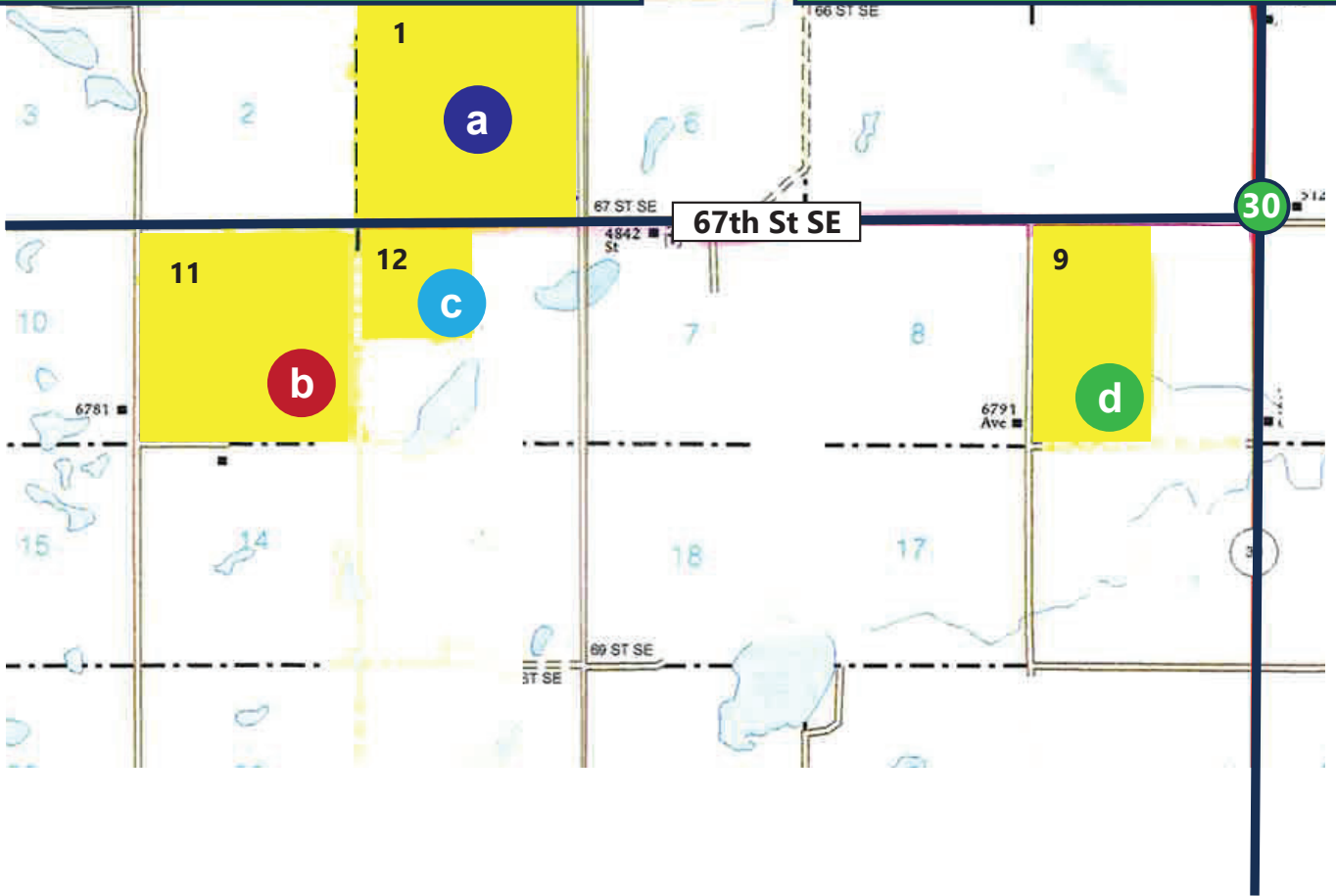
Steve Johnson
701-799-5213

★ STREETER

↑
16 MILES

T-134-N HOLLANDSWORTH PLAT

T-134-N HILLSBURG PLAT



Directions: From Streeter ND, take Hwy #30 South 16 miles to 67th St. SE. Go West 1 mile (Tract D) or go West 4 miles (Tracts, A, B, C)

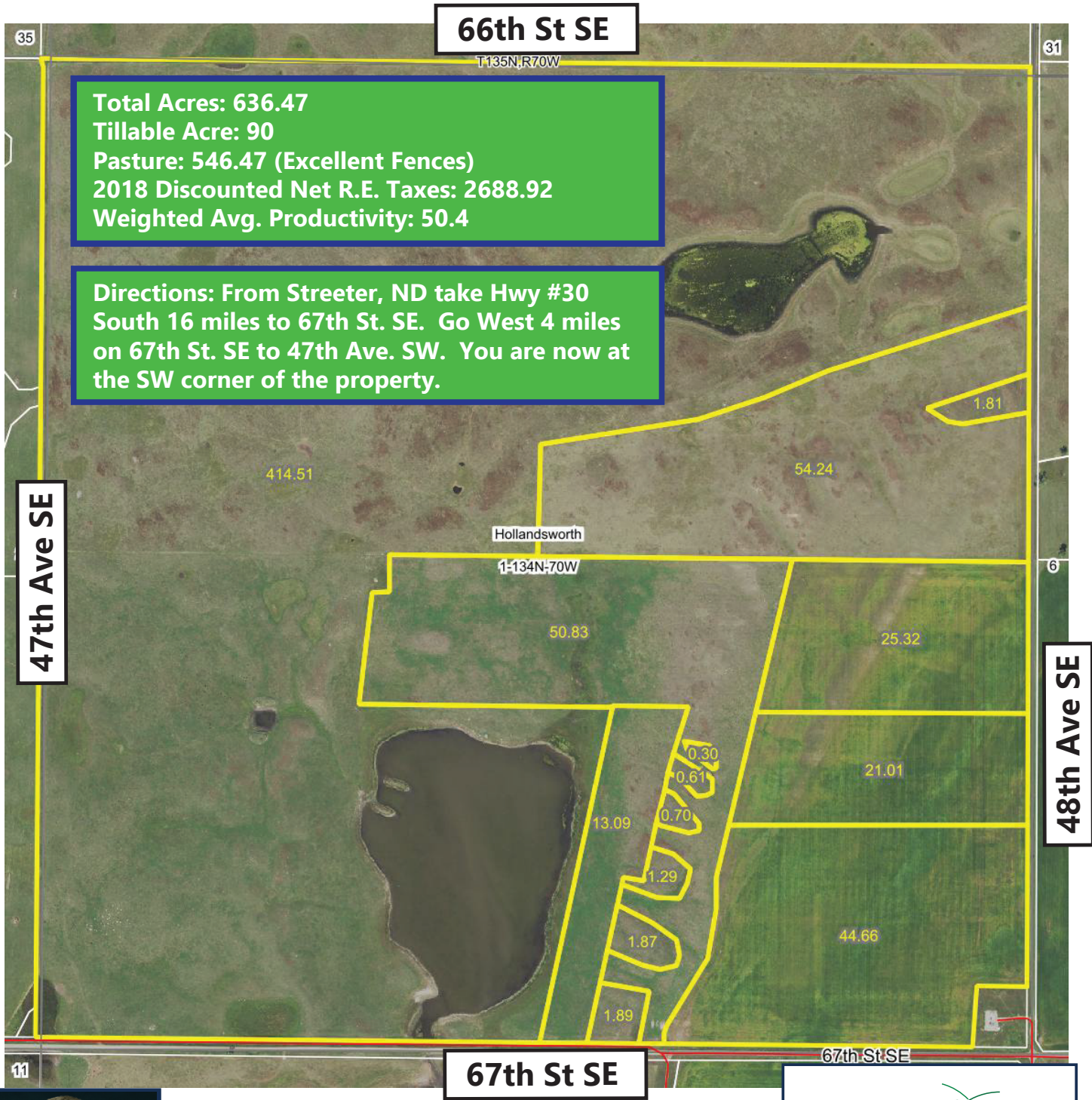
TOTAL ACRES: 1676.47 +-
2018 Discounted Net R.E. Taxes: \$5943.33

Logan County Farmland For Sale

Section 1-134-70

636.47 +/- acres

a



Total Acres: 636.47
Tillable Acre: 90
Pasture: 546.47 (Excellent Fences)
2018 Discounted Net R.E. Taxes: 2688.92
Weighted Avg. Productivity: 50.4

Directions: From Streeter, ND take Hwy #30 South 16 miles to 67th St. SE. Go West 4 miles on 67th St. SE to 47th Ave. SW. You are now at the SW corner of the property.

47th Ave SE

48th Ave SE

67th St SE



*All information contained herein is believed to be true but should be verified to the buyer's satisfaction in case of error, typographical or otherwise. ALL information is subject to change without further notice.

Steve D. Johnson
 Real Estate Broker
 Auctioneer License #976
 701-799-5213
 steve@johnsonauctionandrealty.com



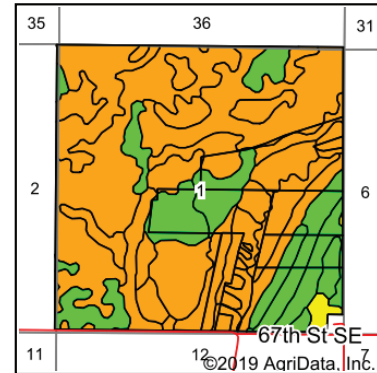
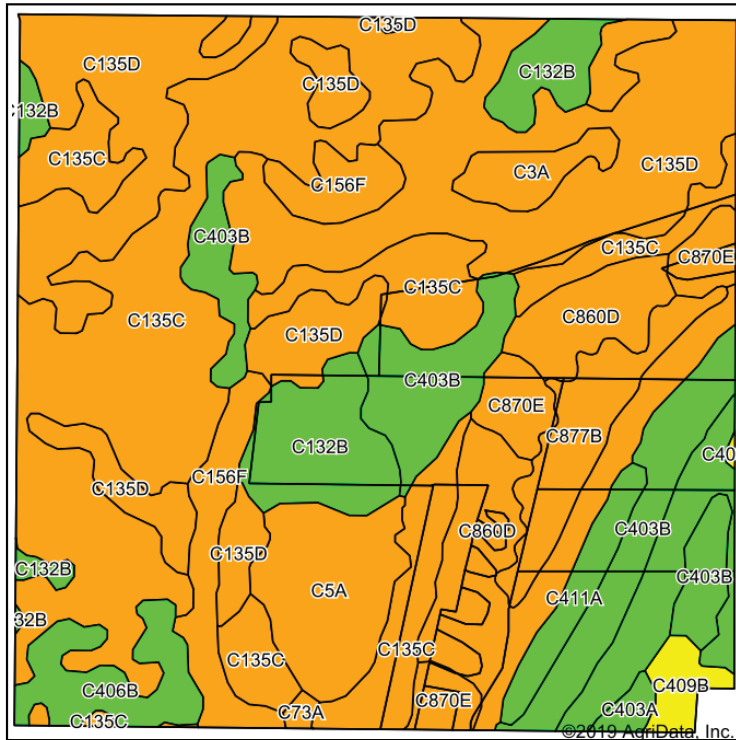
3137 32nd Ave S, Ste 211 | Fargo, ND 58103
 www.johnsonauctionandrealty.com

Logan County Farmland For Sale

Section 1-134-70

636.47 +/- acres

a



State: **North Dakota**
 County: **Logan**
 Location: **1-134N-70W**
 Township: **Hollandsworth**
 Acres: **632.13**
 Date: **9/17/2019**



Soils data provided by USDA and NRCS.

Area Symbol: ND047_Soil Area Version: 21

Code	Soil Description	Acres	Percent of field	PI Legend	NonIrr Class *c	Productivity Index	*n NCCPI Overall
C135C	ZahlWilliamsZahill complex, 6 to 9 percent slopes	178.92	28.3%		IVe	56	49
C135D	ZahlWilliams loams, 9 to 15 percent slopes	149.67	23.7%		VIe	43	46
C403B	TansemMakoti complex, 2 to 6 percent slopes	57.59	9.1%		IIe	79	56
C860D	Schaller loamy sand, 6 to 15 percent slopes	53.14	8.4%		VIe	20	20
C132B	WilliamsZahl loams, 3 to 6 percent slopes	35.77	5.7%		IIe	76	51
C411A	Makoti silty clay loam, 0 to 2 percent slopes	29.61	4.7%		IIc	91	56
C5A	Southam silty clay loam, 0 to 1 percent slopes	27.86	4.4%		VIIIw	5	5
C156F	ZahlMaxBowbells loams, 6 to 35 percent slopes	25.23	4.0%		VIIe	36	23
C877B	WabekLehr complex, 2 to 6 percent slopes	20.78	3.3%		VIIs	39	19
C870E	WabekLehrAppam complex, 9 to 25 percent slopes	17.75	2.8%		VIIIs	23	16
C406B	MakotiSakakawea complex, 2 to 6 percent slopes	17.01	2.7%		IIe	77	53
C3A	Parnell silty clay loam, 0 to 1 percent slopes	8.55	1.4%		Vv	20	18
C409B	Sakakawea silty clay loam, 2 to 6 percent slopes	6.45	1.0%		IIIe	61	51
C403A	TansemMakoti complex, 0 to 2 percent slopes	2.66	0.4%		IIc	84	57
C73A	HamertyVallers loams, moderately saline, 0 to 3 percent slopes	1.14	0.2%		IIIIs	40	41
Weighted Average						50.4	*n 41.8

*n: The aggregation method is "Weighted Average using major components"
 *c: Using Capabilities Class Dominant Condition Aggregation Method
 Soils data provided by USDA and NRCS.



*All information contained herein is believed to be true but should be verified to the buyer's satisfaction in case of error, typographical or otherwise. ALL information is subject to change without further notice.

Steve D. Johnson
 Real Estate Broker
 Auctioneer License #976
 701-799-5213
 steve@johnsonauctionandrealty.com



3137 32nd Ave S, Ste 211 | Fargo, ND 58103
 www.johnsonauctionandrealty.com

Logan County Farmland For Sale

NE1/4, SW1/4, SE ¼ & S1/2NW1/4 Section 11-134-70

560+- acres

b

67th St SE

Total Acres: 560

83.53 cropland

475 pasture

2018 Discounted Net R.E. Taxes: 2096.15

Weighted Avg. Productivity: 50.3

Directions: From Streeter ND take Hwy #30 South 16 miles to 67th St. SE. Go West 4 miles on 67th St. SE. to 47th Ave. SW. You are now at the NE corner of the property.

46th Ave SE

47th Ave SE

68th St SE



*All information contained herein is believed to be true but should be verified to the buyer's satisfaction in case of error, typographical or otherwise. ALL information is subject to change without further notice.

Steve D. Johnson

Real Estate Broker

Auctioneer License #976

701-799-5213

steve@johnsonauctionandrealty.com



3137 32nd Ave S, Ste 211 | Fargo, ND 58103

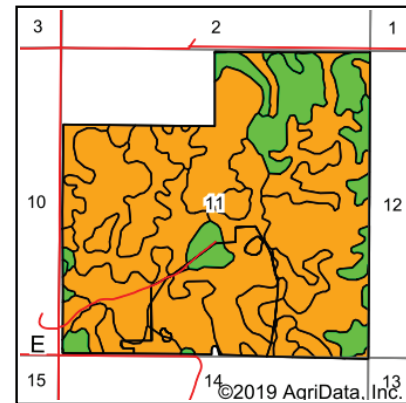
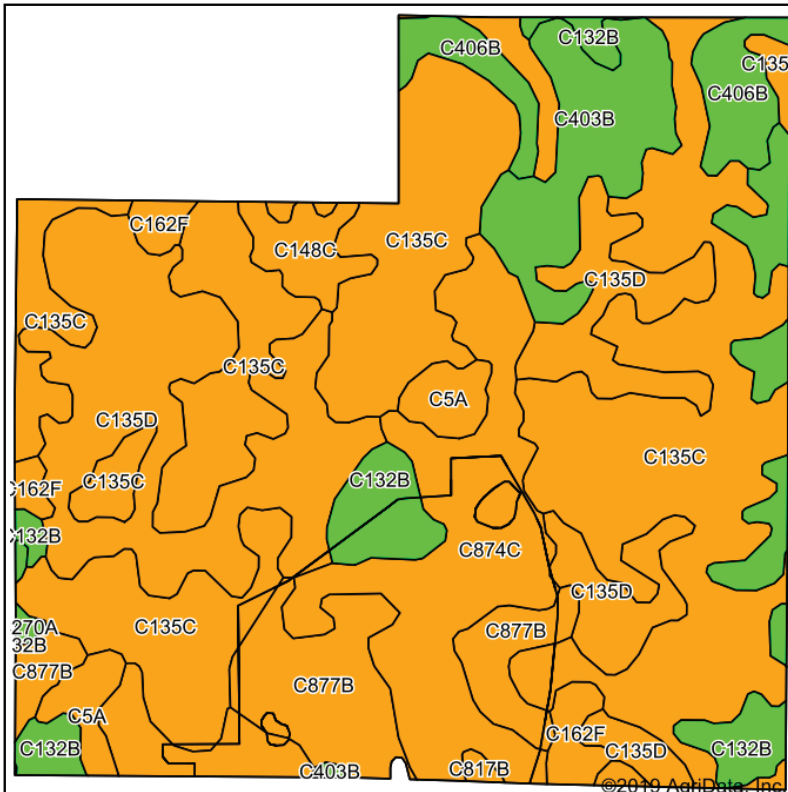
www.johnsonauctionandrealty.com

Logan County Farmland For Sale

NE1/4, SW1/4, SE ¼ & S1/2NW1/4 Section 11-134-70

560+- acres

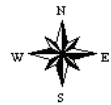
b



State: **North Dakota**
 County: **Logan**
 Location: **11-134N-70W**
 Township: **Hollandsworth**
 Acres: **544.68**
 Date: **9/17/2019**



Maps Provided By:
surety
 CUSTOMIZED ONLINE MAPPING
 © AgriData, Inc. 2019 www.AgriDataInc.com



Soils data provided by USDA and NRCS.

Area Symbol: ND047, Soil Area Version: 21

Code	Soil Description	Acres	Percent of field	PI Legend	NonIrr Class *c	Productivity Index	*n NCCPI Overall
C135C	ZahlWilliamsZahill complex, 6 to 9 percent slopes	217.68	40.0%		IVe	56	49
C135D	ZahlWilliams loams, 9 to 15 percent slopes	103.73	19.0%		VIe	43	46
C874C	WabekAppam complex, 6 to 9 percent slopes	68.12	12.5%		VIIs	26	14
C132B	WilliamsZahl loams, 3 to 6 percent slopes	38.18	7.0%		IIe	76	51
C877B	WabekLehr complex, 2 to 6 percent slopes	37.33	6.9%		VIIs	39	19
C403B	TansemMakoti complex, 2 to 6 percent slopes	30.05	5.5%		IIe	79	56
C406B	MakotiSakakawea complex, 2 to 6 percent slopes	18.20	3.3%		IIe	77	53
C5A	Southam silty clay loam, 0 to 1 percent slopes	11.26	2.1%		VIIIw	5	5
C162F	MaxZahlArnegard complex, 9 to 35 percent slopes, very stony	9.36	1.7%		VIIs	20	21
C148C	WilliamsZahlParnell complex, 0 to 9 percent slopes	8.58	1.6%		IVe	51	42
C270A	Hamerly loam, 0 to 3 percent slopes	1.23	0.2%		IIe	76	50
C817B	LehrBowdle loams, 2 to 6 percent slopes	0.96	0.2%		IIIe	50	24
Weighted Average						50.3	*n 41.1

*n: The aggregation method is "Weighted Average using major components"

*c: Using Capabilities Class Dominant Condition Aggregation Method

Soils data provided by USDA and NRCS.



*All information contained herein is believed to be true but should be verified to the buyer's satisfaction in case of error, typographical or otherwise. ALL information is subject to change without further notice.

Steve D. Johnson
 Real Estate Broker
 Auctioneer License #976
 701-799-5213
 steve@johnsonauctionandrealty.com



3137 32nd Ave S, Ste 211 | Fargo, ND 58103
 www.johnsonauctionandrealty.com

Logan County Farmland For Sale

NW ¼ Section 12-134-70

160 acres

C

67th St SE

67th St SE

Total Acres: 160
Pasture Acres: 156.14 (Excellent Fences)
2018 Discounted Net R.E. Taxes: \$550.29
Weighted Avg. Productivity: 54.6

Directions: From Streeter ND, take Hwy #30 16 miles South to 67th St. SE. Go West 4 miles to 47th Ave. SW. You are now at the NW corner of the property.

156.14

Hollandsworth

12-134N-70W

47th Ave SE

48th Ave SE

68th St SE



*All information contained herein is believed to be true but should be verified to the buyer's satisfaction in case of error, typographical or otherwise. ALL information is subject to change without further notice.

Steve D. Johnson
Real Estate Broker
Auctioneer License #976
701-799-5213
steve@johnsonauctionandrealty.com



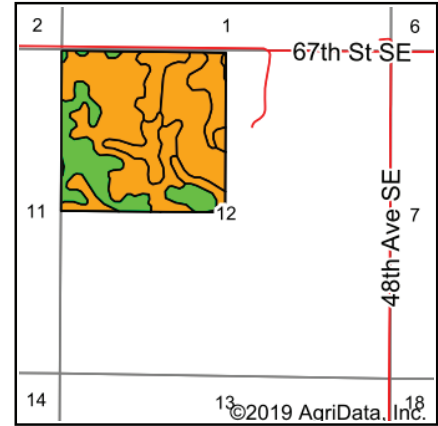
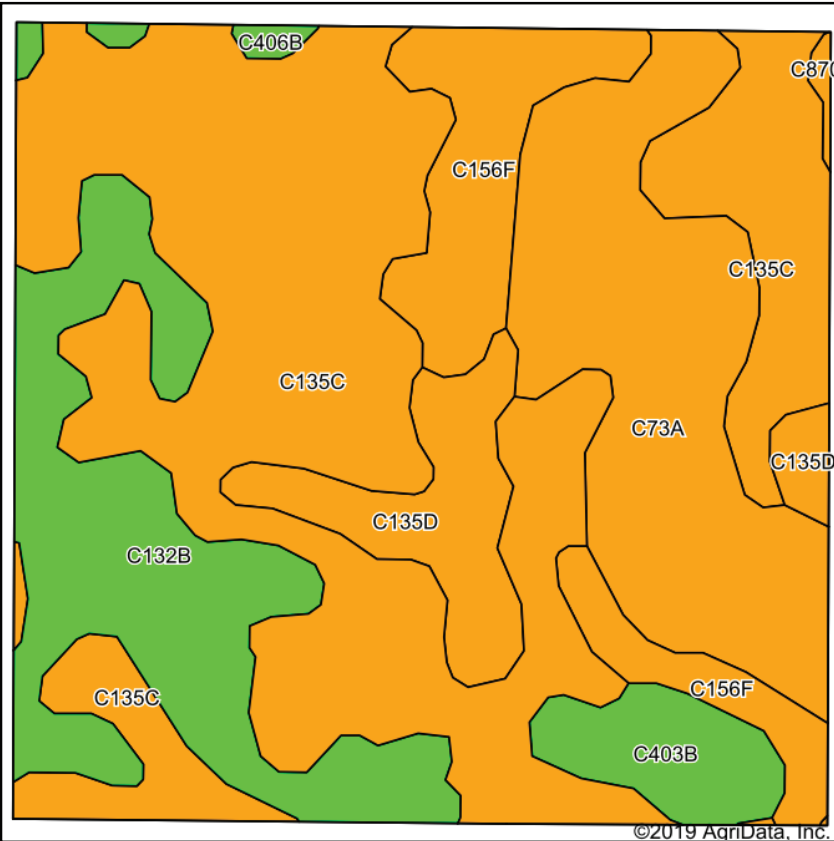
3137 32nd Ave S, Ste 211 | Fargo, ND 58103
www.johnsonauctionandrealty.com

Logan County Farmland For Sale

NW ¼ Section 12-134-70

160 acres

C



State: **North Dakota**
 County: **Logan**
 Location: **12-134N-70W**
 Township: **Hollandsworth**
 Acres: **156.14**
 Date: **9/17/2019**



Soils data provided by USDA and NRCS.

Area Symbol: ND047. Soil Area Version: 21

Code	Soil Description	Acres	Percent of field	PI Legend	NonIrr Class *c	Productivity Index	*n NCCPI Overall
C135C	ZahlWilliamsZahill complex, 6 to 9 percent slopes	71.62	45.9%	Orange	IVe	56	49
C73A	HamerlyVallers loams, moderately saline, 0 to 3 percent slopes	28.01	17.9%	Orange	IIIIs	40	41
C132B	WilliamsZahl loams, 3 to 6 percent slopes	24.89	15.9%	Green	Ile	76	51
C156F	ZahlMaxBowbells loams, 6 to 35 percent slopes	14.07	9.0%	Orange	VIIe	36	23
C135D	ZahlWilliams loams, 9 to 15 percent slopes	10.18	6.5%	Orange	VIe	43	46
C403B	TansemMakoti complex, 2 to 6 percent slopes	5.84	3.7%	Green	Ile	79	56
C406B	MakotiSakakawea complex, 2 to 6 percent slopes	1.13	0.7%	Green	Ile	77	53
C870E	WabekLehrAppam complex, 9 to 25 percent slopes	0.40	0.3%	Orange	VIIIs	23	16
Weighted Average						54.6	*n 45.6

*n: The aggregation method is "Weighted Average using major components"
 *c: Using Capabilities Class Dominant Condition Aggregation Method
 Soils data provided by USDA and NRCS.



*All information contained herein is believed to be true but should be verified to the buyer's satisfaction in case of error, typographical or otherwise. ALL information is subject to change without further notice.

Steve D. Johnson
 Real Estate Broker
 Auctioneer License #976
 701-799-5213
 steve@johnsonauctionandrealty.com



3137 32nd Ave S, Ste 211 | Fargo, ND 58103
 www.johnsonauctionandrealty.com

Logan County Farmland For Sale

NW ¼ & SW ¼ Section 9-134-69

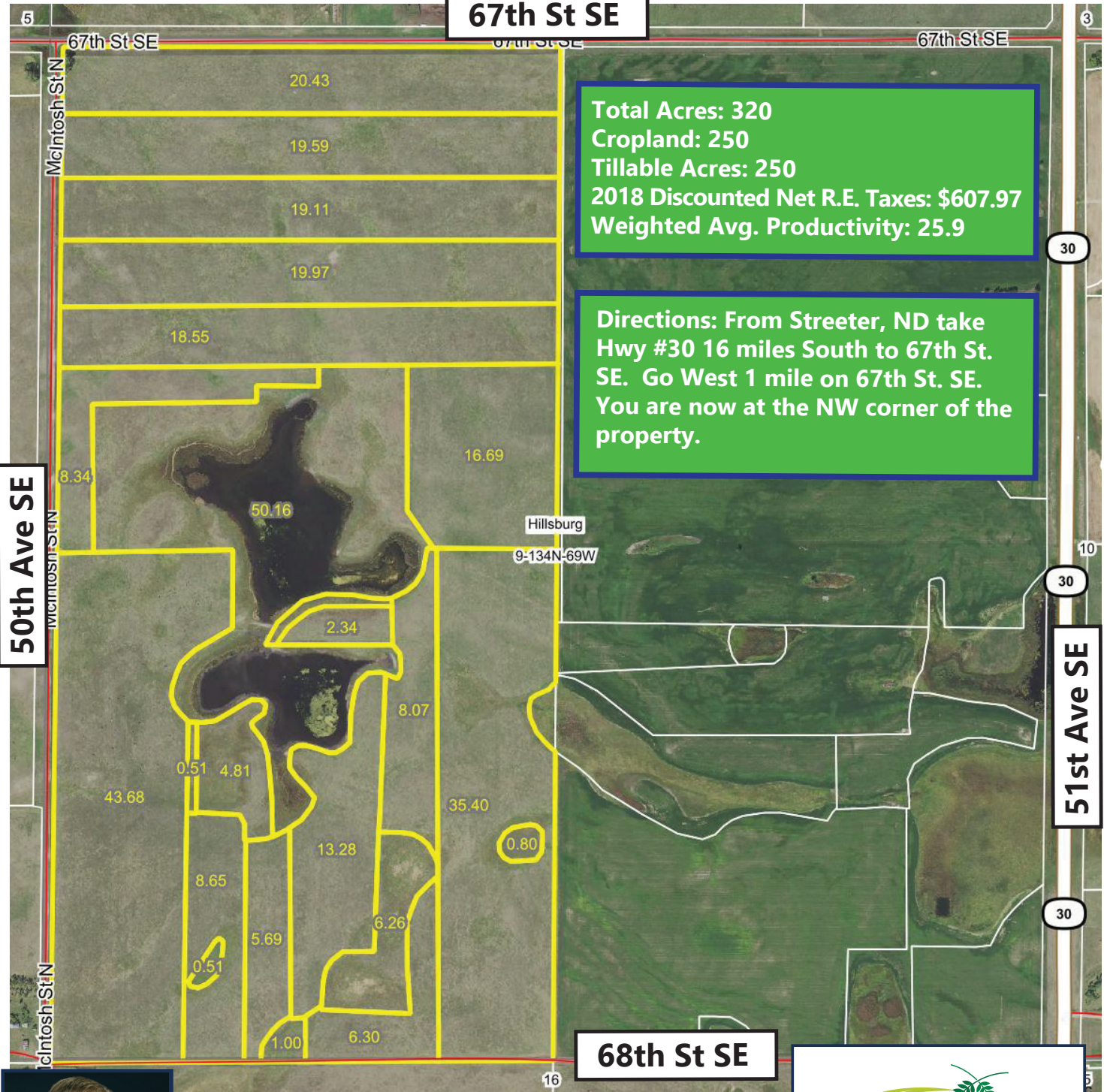
320 acres

d

67th St SE

Total Acres: 320
Cropland: 250
Tillable Acres: 250
2018 Discounted Net R.E. Taxes: \$607.97
Weighted Avg. Productivity: 25.9

Directions: From Streeter, ND take Hwy #30 16 miles South to 67th St. SE. Go West 1 mile on 67th St. SE. You are now at the NW corner of the property.



50th Ave SE

51st Ave SE

68th St SE



*All information contained herein is believed to be true but should be verified to the buyer's satisfaction in case of error, typographical or otherwise. ALL information is subject to change without further notice.

Steve D. Johnson
 Real Estate Broker
 Auctioneer License #976
 701-799-5213
 steve@johnsonauctionandrealty.com



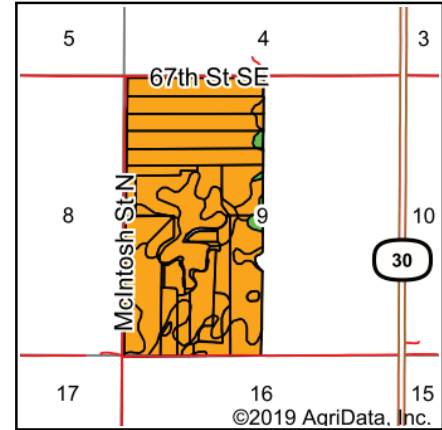
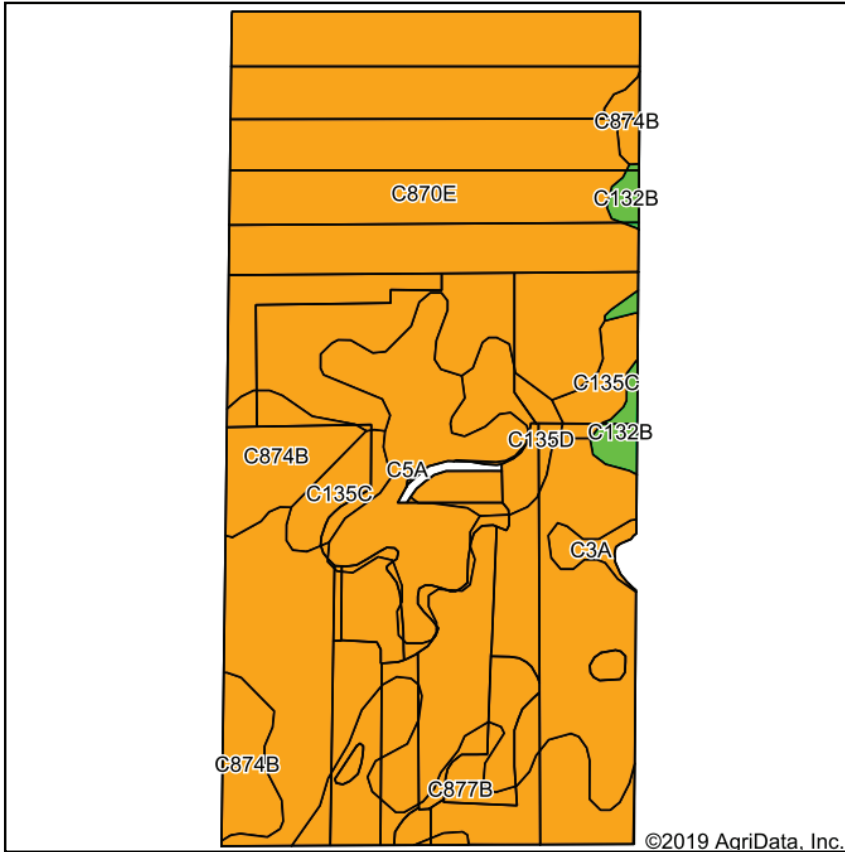
3137 32nd Ave S, Ste 211 | Fargo, ND 58103
 www.johnsonauctionandrealty.com

Logan County Farmland For Sale

NW ¼ & SW ¼ Section 9-134-69

320 acres

d



State: **North Dakota**
 County: **Logan**
 Location: **9-134N-69W**
 Township: **Hillsburg**
 Acres: **310.14**
 Date: **9/17/2019**



Soils data provided by USDA and NRCS.

Area Symbol: ND047. Soil Area Version: 21

Code	Soil Description	Acres	Percent of field	PI Legend	NonIrr Class *c	Productivity Index	*n NCCPI Overall
C870E	WabekLehrAppam complex, 9 to 25 percent slopes	213.01	68.7%		VIIIs	23	16
C5A	Southam silty clay loam, 0 to 1 percent slopes	25.10	8.1%		VIIIw	5	5
C877B	WabekLehr complex, 2 to 6 percent slopes	24.58	7.9%		VIIs	39	19
C874B	WabekAppam complex, 2 to 6 percent slopes	19.55	6.3%		VIIs	32	14
C135D	ZahWilliams loams, 9 to 15 percent slopes	10.88	3.5%		VIe	43	46
C135C	ZahWilliamsZahill complex, 6 to 9 percent slopes	10.46	3.4%		IVe	56	49
C132B	WilliamsZahl loams, 3 to 6 percent slopes	4.22	1.4%		IIe	76	51
C3A	Parnell silty clay loam, 0 to 1 percent slopes	2.34	0.8%		Vw	20	18
Weighted Average						25.9	*n 17.9

*n: The aggregation method is "Weighted Average using major components"
 *c: Using Capabilities Class Dominant Condition Aggregation Method
 Soils data provided by USDA and NRCS.



*All information contained herein is believed to be true but should be verified to the buyer's satisfaction in case of error, typographical or otherwise. ALL information is subject to change without further notice.

Steve D. Johnson
 Real Estate Broker
 Auctioneer License #976
 701-799-5213
 steve@johnsonauctionandrealty.com



3137 32nd Ave S, Ste 211 | Fargo, ND 58103
 www.johnsonauctionandrealty.com

a Section 1

Total Acres: 636.47
Tillable Acres: 90
Pasture: 546.47 (Excellent Fences)
2018 Discounted Net R.E. Taxes: 2688.92
Weighted Avg. Productivity: 50.4

c Section 12

Total Acres: 160
Pasture Acres: 156.14 (Excellent Fences)
2018 Discounted Net R.E. Taxes: \$550.29
Weighted Avg. Productivity: 54.6

b Section 11

Total Acres: 560
83.53 cropland
475 pasture
2018 Discounted Net R.E. Taxes: 2096.15
Weighted Avg. Productivity: 50.3

d Section 9

Total Acres: 320
Cropland: 250
Tillable Acres: 250
2018 Discounted Net R.E. Taxes: \$607.97
Weighted Avg. Productivity: 25.9

Directions: From Streeter ND, take Hwy #30 South 16 miles to 67th St. SE. Go West 1 mile (Tract D) or go West 4 miles (Tracts, A, B, C)

TOTAL ACRES: 1676.47 +/-
2018 Discounted Net R.E. Taxes: \$5943.33



*All information contained herein is believed to be true but should be verified to the buyer's satisfaction in case of error, typographical or otherwise. ALL information is subject to change without further notice.

Steve D. Johnson
Real Estate Broker
Auctioneer License #976
701-799-5213
steve@johnsonauctionandrealty.com

3137 32nd Ave S, Ste 211 | Fargo, ND 58103
www.johnsonauctionandrealty.com



701-799-5213

steve@johnsonauctionandrealty.com

3137 32nd Ave S, Ste 211 | Fargo, ND 58103

www.johnsonauctionandrealty.com