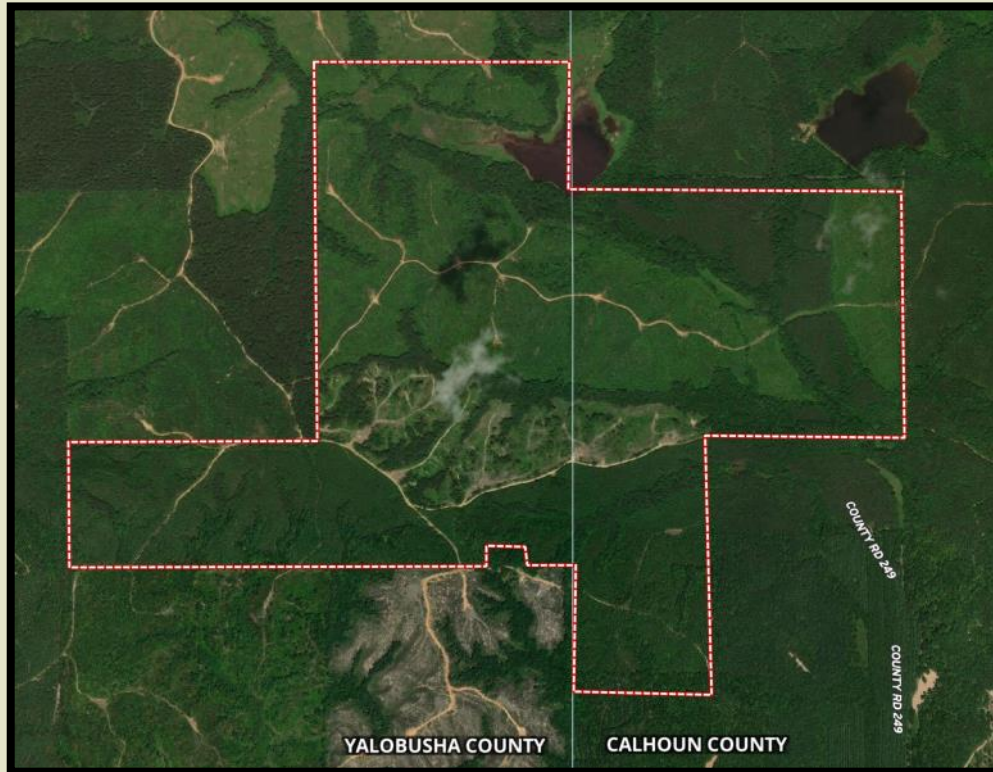


DOG CREEK

686.42 Acres

Calhoun & Yalobusha County



CONTACT:
J. PARKER SARTAIN
601.506.2398
psartain@sartainsheritage.com

Sartain's Heritage Properties
106 First Choice Drive
Madison, MS 39110
Phone: 601-856-2720
Fax: 601-853-6765
www.SartainsHeritage.com

686.42 acres on Yalobusha and Calhoun County in Sections 22 and 27, Township 12 South, Range 3 West, Calhoun County and Section 24, Township 25 North, Range 7 East, Yalobusha County, MS.

The tract consists of various pine timber ages from approx. 250 acres pre-merchantable 2 to 8 year pines, 155 acres of 14 and 15 year pines, to older age 21 years and up merchantable pines with the balance in hardwood Stream-side Management Zones scattered across the tract creating wildlife corridors along the drainages and Dog Creek. The tract has some frontage on a twelve acre lake in the northeast corner of the property. A good interior road system allows access throughout the property for hunting and timber management purposes. Well located 22 miles east of Grenada, 24 miles south of Oxford and 9 miles west of Bruce.

Listed at \$1,243,366.00



All information contained herein is supplied by sources deemed reliable, but is not guaranteed by Sartain's Heritage Properties, its Brokers or Agents. Properties are subject to errors, omissions, correction, price change, prior sale or withdrawal without notice.