



Commercial/Industrial Yard

10± Acres

Reeves County | Pecos, TX 79772



Presented By:

Caleb Matott, Broker/Owner

RanchSpecialist@CMRanchRealEstate.com | 432-349-3330



LEASE - Commercial/Industrial Yard - 10± Acres Reeves County | Pecos, TX



Presented By:
Caleb Matott, Broker/Owner
432-349-3330
BigDogRanchSales@mac.com

CM Ranch Real Estate

6800 W. County Rd. 48 | Midland, TX 79707 | 432-219-2220 | RanchSpecialist@CMRanchRealEstate.com

www.CMRanchRealEstate.com

Property Details:

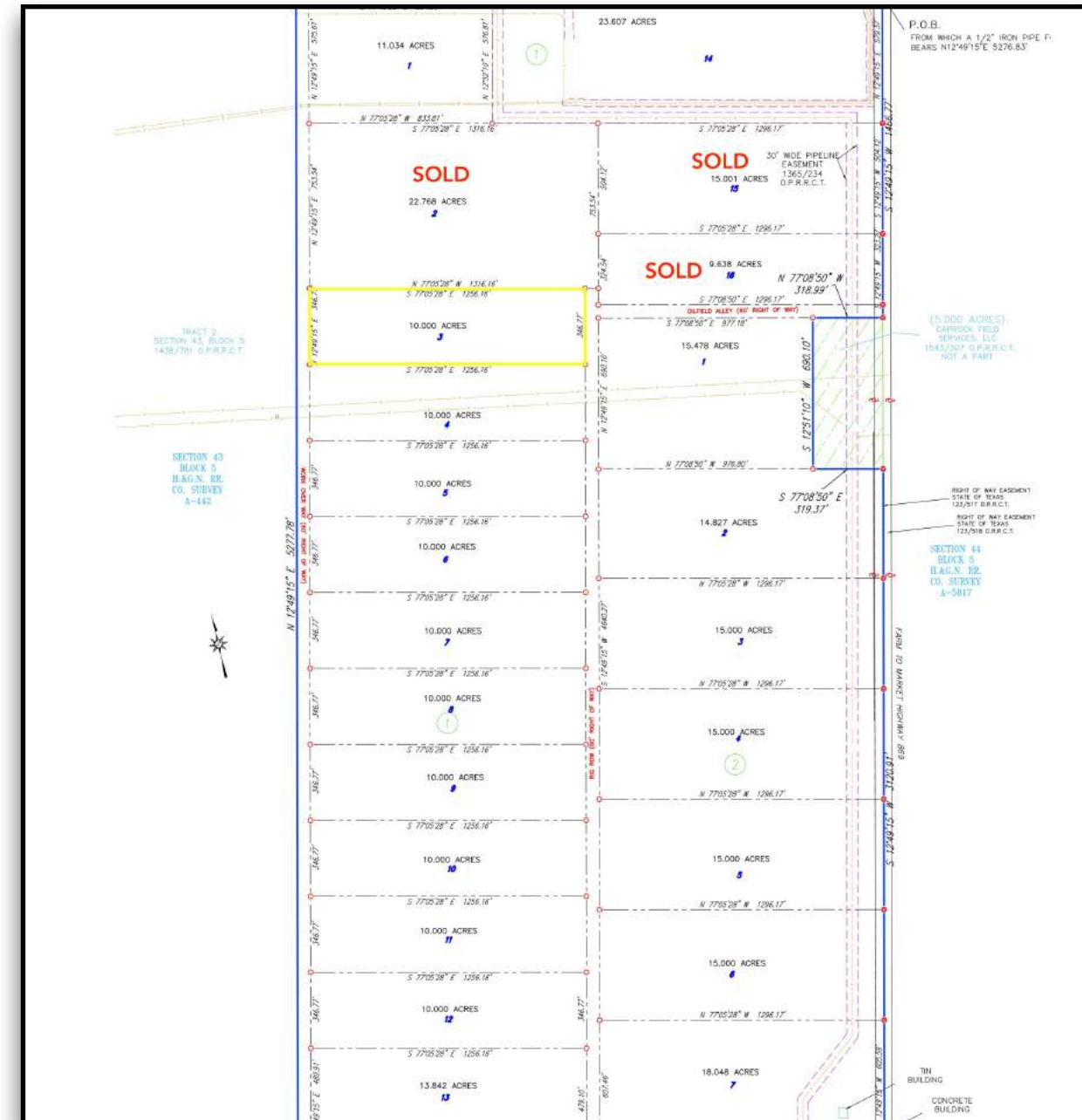
Approximate Building Sq. Ft.
Lot Size:
Current Zoning:
County:

10,000±
10± Acres
Commercial/Industrial
Reeves

Property Overview:

Brand New 10± acre Commercial/Industrial Yard in Reeves County with all the conveniences and accessibility that Pecos, TX and the Delaware Basin have to offer. The 10,000± sq. ft. new shop has 2,000± sq. ft. of office space with an upstairs 3 bedroom, 2 bath apartment. There are also 7 new RV hook-ups on location. This property is 4 miles west of Pecos on I-20 and 1.5 miles south on FM 869. Super location with TCEQ water available. Perfect for any company. 5-year Triple Net Lease @ \$20,000 per month or for purchase @ \$1,700,000.

Property Website



Presented By:
Caleb Matott, Broker/Owner
432-349-3330
BigDogRanchSales@mac.com

CM Ranch Real Estate

6800 W. County Rd. 48 | Midland, TX 79707 | 432-219-2220 | RanchSpecialist@CMRanchRealEstate.com
www.CMRanchRealEstate.com



Copyright © 2018 CM Ranch Real Estate. All Rights Reserved.

Presented By:
Caleb Matott, Broker/Owner
432-349-3330
BigDogRanchSales@mac.com

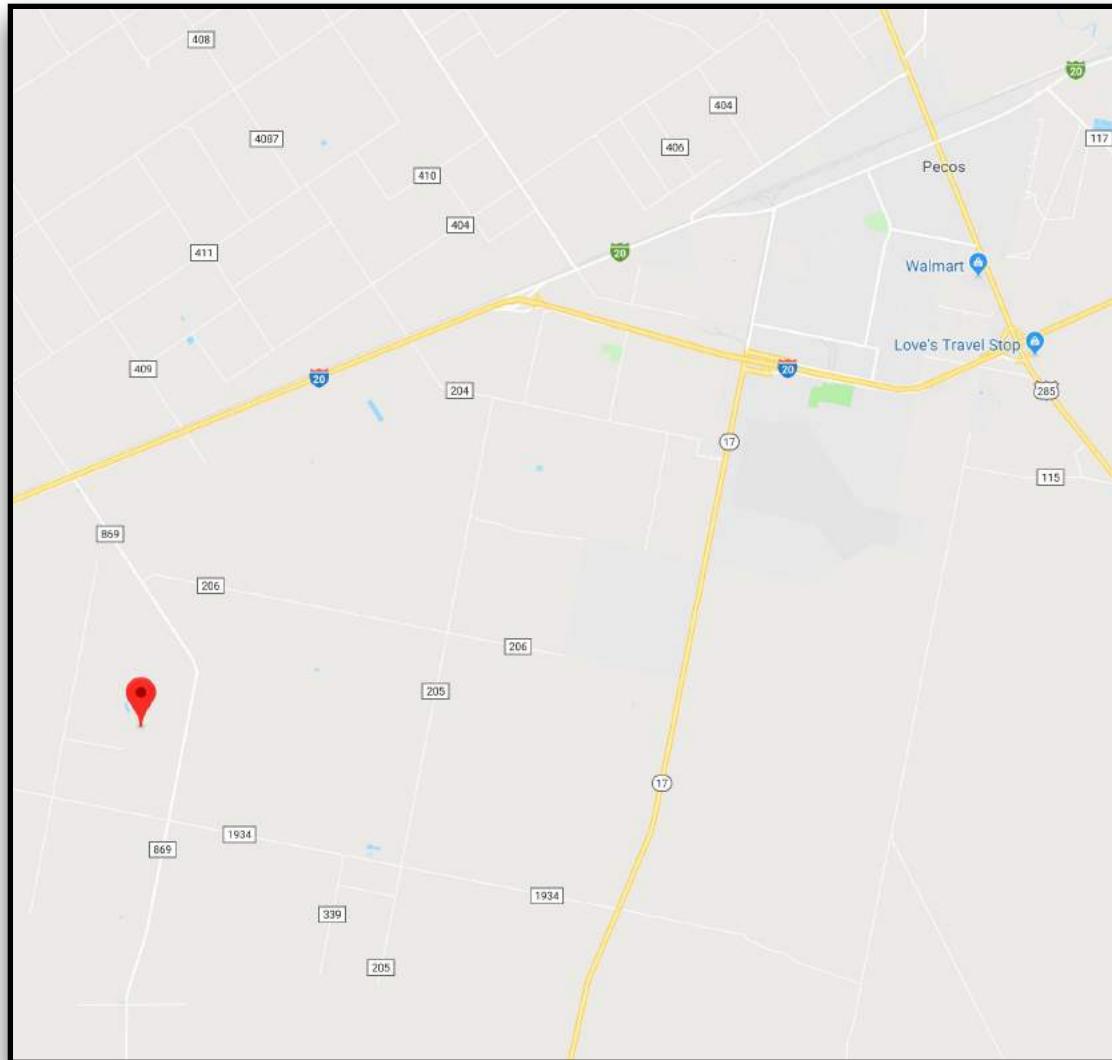
CM Ranch Real Estate

6800 W. County Rd. 48 | Midland, TX 79707 | 432-219-2220 | RanchSpecialist@CMRanchRealEstate.com

www.CMRanchRealEstate.com



Reeves County | Pecos, TX - 10± Acres \$20,000.00 per month



Click for Interactive Property Map

Texas law requires all real estate licensees to give the following information about brokerage services to prospective buyers, tenants, sellers, & landlords.

Information About Brokerage Services

DISCLAIMER – This property offering is subject to prior sale, change in price, or removal from market without notice. While the information provided is deemed reliable, it is not guaranteed by Caleb Matott or CM Ranch Real Estate.

Presented By:
Caleb Matott, Broker/Owner
432-349-3330
BigDogRanchSales@mac.com

CM Ranch Real Estate

6800 W. County Rd. 48 | Midland, TX 79707 | 432-219-2220 | RanchSpecialist@CMRanchRealEstate.com

www.CMRanchRealEstate.com