



Axis Hollow +/-504 Acres



This Hill County gem is ready to enjoy. End of the road and private. The quality of wildlife in this area of Edwards county is jaw dropping. The best whitetail harvested from Edwards County come from this area yearly.

The number of gold medal axis in the area is also very impressive.

The Axis Hollow Ranch is ready to hunt today!

Located in North Central Edwards county

End of the road ranch, very private with no easement through or around the property

Good access Only 20 minutes from Rocksprings

Terrain is gently rolling making the land 100% accessible and useable

Seller has done extensive brush work to open up several nice areas with large oaks

The areas of selective clearing and the thick areas of vegetation
make it the perfect habitat for the wildlife to flourish

Completely fenced Electricity Two good water wells Large dirt tank
Five blind and feeder locations

Miles upon miles upon miles of improved ranch roads

Two 36ft travel trailers in good condition

1100sqft metal building covering one travel trailer that is partially enclosed
400sqft well/storage shed

Larger neighbors, no small tracts around this ranch

Game includes whitetail, turkey, hogs, axis, black buck
and several other species of free ranging exotics

Wildlife exempt taxes \$999,000 Listing #521

Western Hill Country Realty

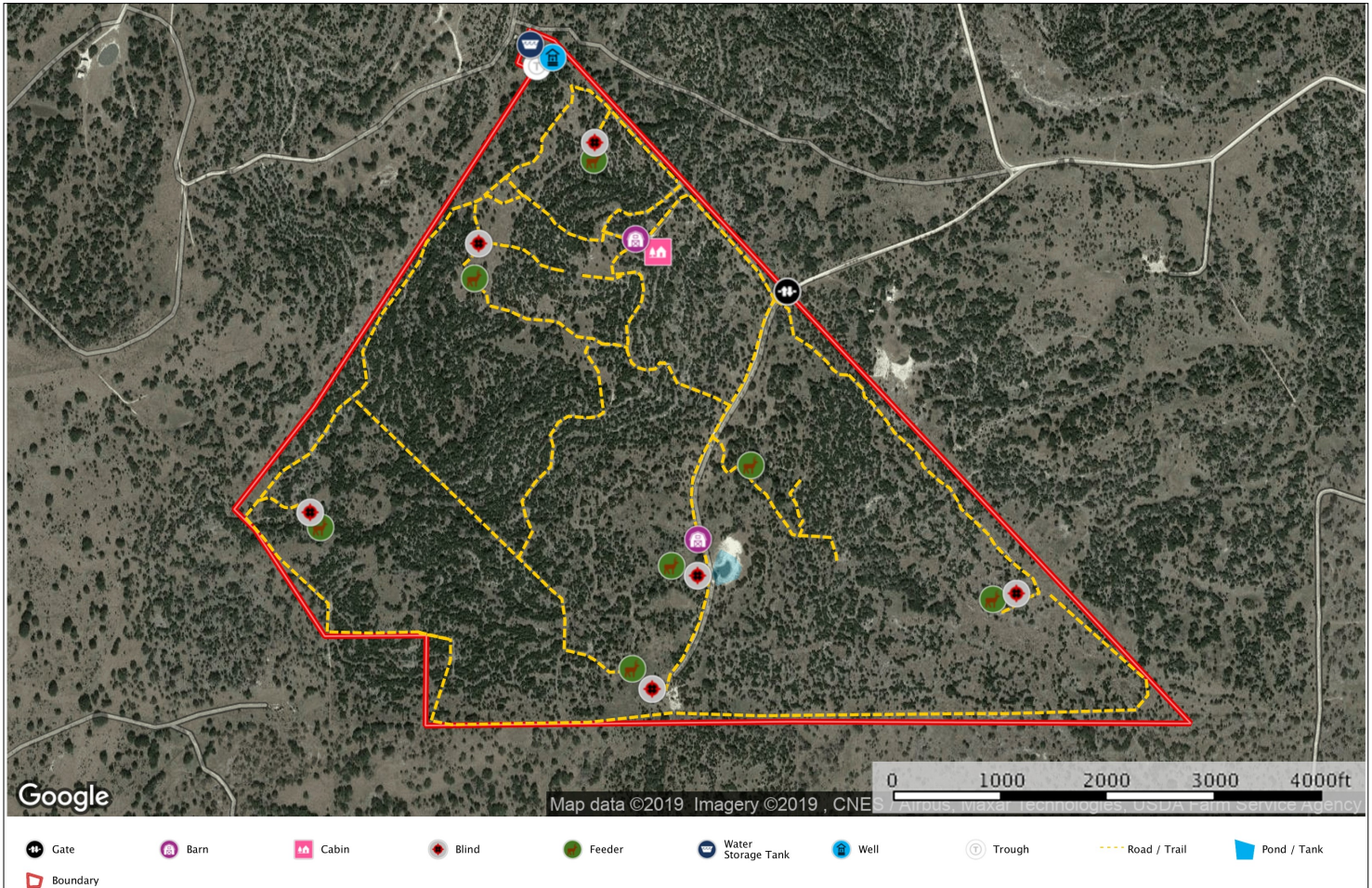
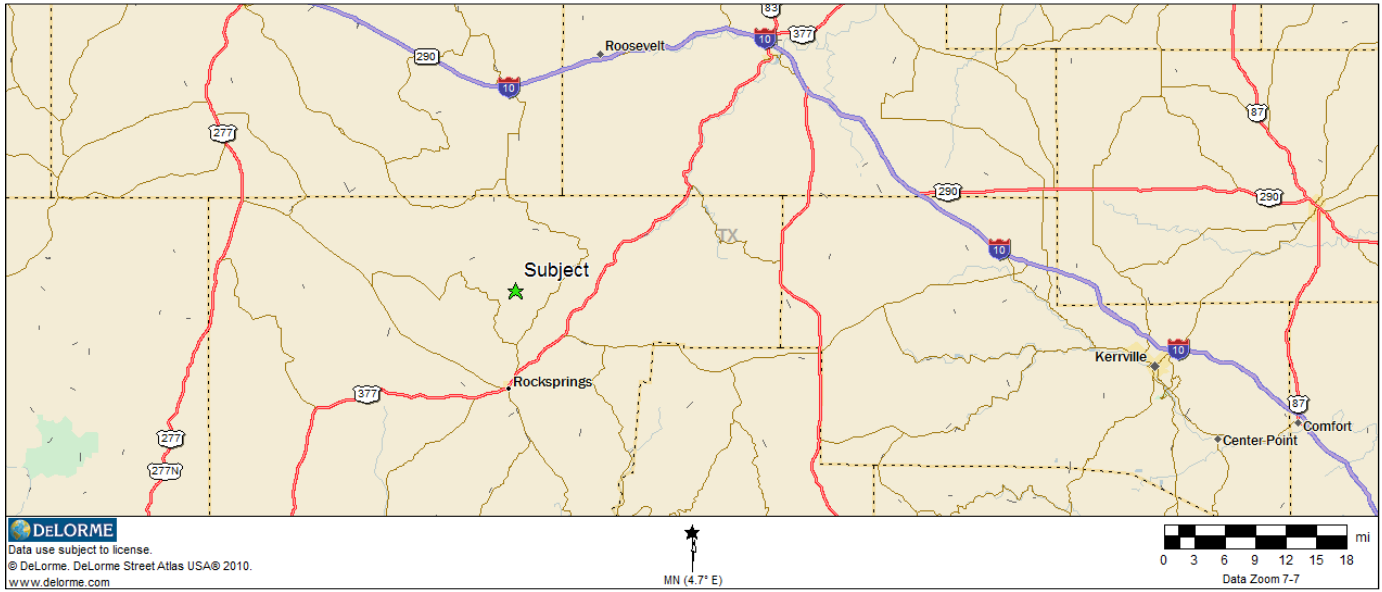
www.westernhillcountryrealty.com

info@westernhillcountryrealty.com

830-683-4435



Axis Hollow +/-504 Acres



Western Hill Country Realty

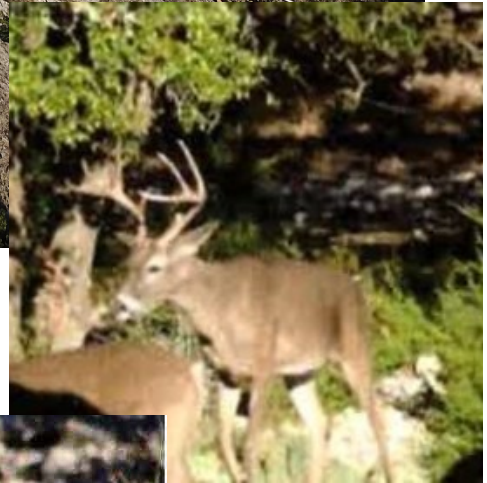
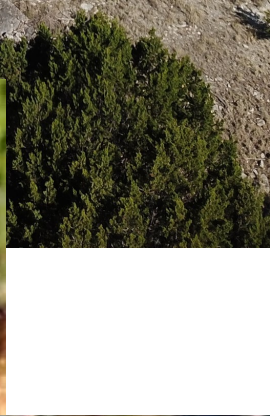
www.westernhillcountryrealty.com

info@westernhillcountryrealty.com

830-683-4435



Axis Hollow +/-504 Acres



Western Hill Country Realty

www.westernhillcountryrealty.com

info@westernhillcountryrealty.com

830-683-4435



Axis Hollow +/-504 Acres



Western Hill Country Realty

www.westernhillcountryrealty.com

info@westernhillcountryrealty.com

830-683-4435