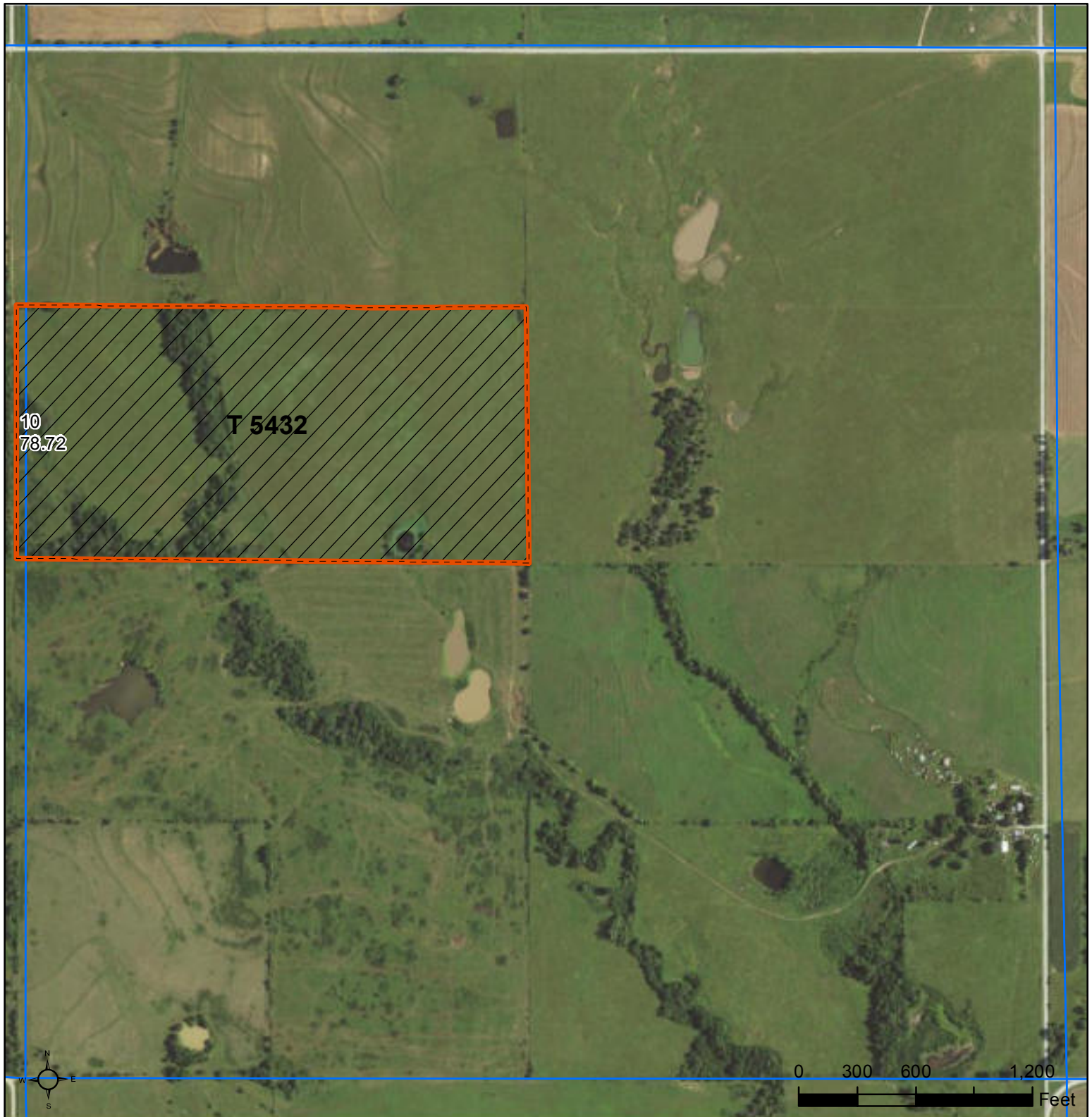




United States
Department of
Agriculture

Coffey County, Kansas



Common Land Unit PLSS

 Non-Cropland
 Tract Boundary

Wetland Determination Identifiers

- Restricted Use
- ▼ Limited Restrictions
- Exempt from Conservation Compliance Provisions

Unless noted on field:

- | | |
|-----------------------------|----------------------|
| 1/ All Wheat HRW, NI, GR | 5/ Grass NAG, NI, FG |
| 2/ All Sorghum GRS, NI, GR | 6/ Grass NAG, NI, LS |
| 3/ All Corn YEL, NI, GR | 7/ Grass FTA, NI, FG |
| 4/ All Soybeans COM, NI, GR | 8/ Grass FTA, NI, LS |

2018 Program Year

Map Created December 01, 2017

Farm 6825

Tract 5432

17-20-16

Tract Cropland Total: 0.00 acres

Displayed over 2015 NAIP

United States Department of Agriculture (USDA) Farm Service Agency (FSA) maps are for FSA Program administration only. This map does not represent a legal survey or reflect actual ownership; rather it depicts the information provided directly from the producer and/or National Agricultural Imagery Program (NAIP) imagery. The producer accepts the data 'as is' and assumes all risks associated with its use. USDA-FSA assumes no responsibility for actual or consequential damage incurred as a result of any user's reliance on this data outside FSA Programs. Wetland identifiers do not represent the size, shape, or specific determination of the area. Refer to your original determination (CPA-026 and attached maps) for exact boundaries and determinations or contact USDA Natural Resources Conservation Service (NRCS).