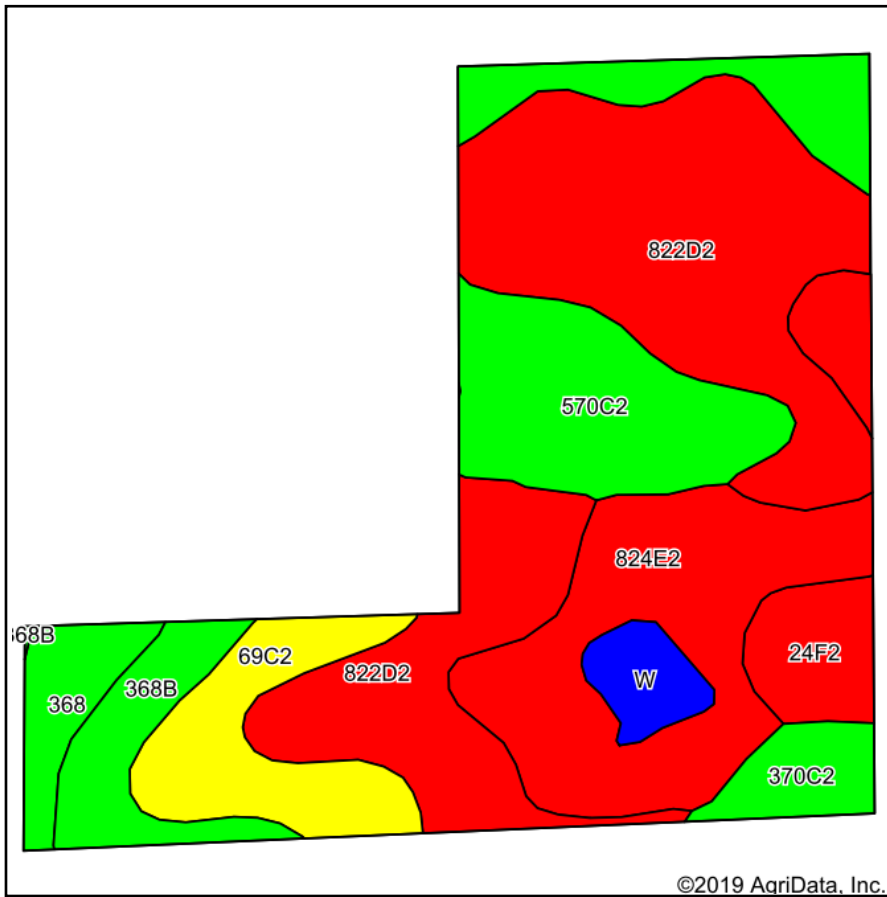
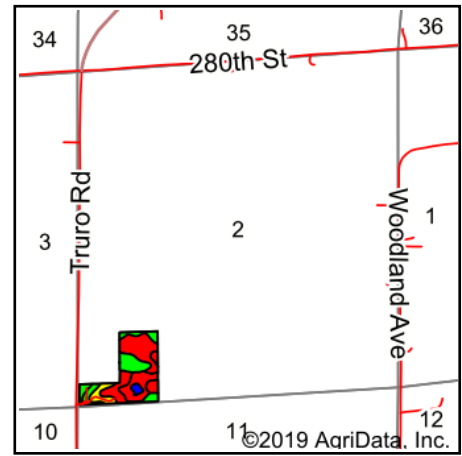


Soils Map



Soils data provided by USDA and NRCS.



State: **Iowa**
 County: **Madison**
 Location: **2-74N-26W**
 Township: **Ohio**
 Acres: **22**
 Date: **12/9/2019**



Maps Provided By:



Area Symbol: IA121, Soil Area Version: 23											
Code	Soil Description	Acres	Percent of field	CSR2 Legend	Non-Irr Class *c	*i Corn	*i Soybeans	CSR2**	*n NCCPI Overall	*n NCCPI Corn	*n NCCPI Soybeans
822D2	Lamoni clay loam, 9 to 14 percent slopes, eroded	8.13	37.0%		IVe			7	51	51	37
824E2	Shelby-Lamoni complex, 14 to 18 percent slopes, moderately eroded	4.24	19.3%		IVe			27	59	59	46
570C2	Nira silty clay loam, dissected till plain, 5 to 9 percent slopes, eroded	3.75	17.0%		IIIe			81	80	80	69
69C2	Clearfield silty clay loam, dissected till plain, 5 to 9 percent slopes, eroded	1.81	8.2%		IIIw			56	59	59	54
368B	Macksburg silty clay loam, 2 to 5 percent slopes	1.17	5.3%		Ile			89	84	84	76
24F2	Shelby clay loam, dissected till plain, 18 to 25 percent slopes, eroded	0.88	4.0%		Vle			20	49	49	34
368	Macksburg silty clay loam, 0 to 2 percent slopes	0.77	3.5%		Iw			93	85	85	78
370C2	Sharpsburg silty clay loam, 5 to 9 percent slopes, eroded	0.70	3.2%		IIIe			80	71	71	63
W	Water	0.55	2.5%			0	0	0		0	0
Weighted Average						*-	*-	37.5	*n 60.4	*n 60.4	*n 48.9

**IA has updated the CSR values for each county to CSR2.

*i Yield data provided by the ISPAID Database version 8.1.1 developed by IA State University.

*n: The aggregation method is "Weighted Average using major components"

*c: Using Capabilities Class Dominant Condition Aggregation Method

Soils data provided by USDA and NRCS.