

Turn-Key 7 +/- Acre Missouri Property with Cabin for Sale - Ralls County

Trophy Properties and Auction • 855.573.5263 • leads@trophypro.com



PROPERTY ADDRESS:

24999 Double B Ranch
 Perry, MO 63462

PRICE: \$268,900

ACRES: 7

COUNTY: Ralls

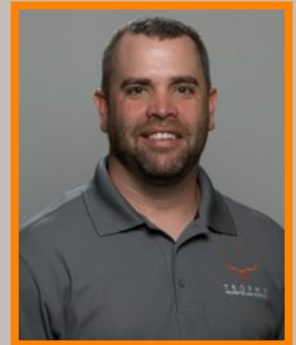
PROPERTY DESCRIPTION:

Northeast MO cabin for sale features 4 bedrooms, 2 baths, 1,900 square feet, fireplace, sun-room, wood stove and shed. Ralls County, MO recreation property covers 7 secluded acres. This Perry, MO vacation property is just 5 miles from Mark Twain Lake featuring access to Blackjack Marina and Ray Behrens Recreational Area.

Perry, MO is the Southern Gateway to Mark Twain Lake and over 18,000 acres of water recreation. Our rural northeast Missouri community features retail, commerce and industry. This area is also rich in history with the Mark Twain Birthplace Museum and Historic Site as well as Hannibal, MO among the notable sites.

PROPERTY HIGHLIGHTS:

- 7 +/- acres located in Perry, MO
- 4BD/2BA 1,900 sq. ft. cabin
- Turn-key property
- Weekend getaway or vacation home
- Recreational opportunities including hunting, fishing, boating & horseback riding
- Near Mark Twain Lake
- Northeast Missouri location



PRESENTED BY:

JASON CHINN

Land & Home Specialist - MO

M: (660) 541-5058

P: (855) 573-5263 x708

jchinn@trophypro.com

Trophy Properties and Auction

15480 Clayton Road

Suite 101

Ballwin, MO 63011

www.Trophypro.com

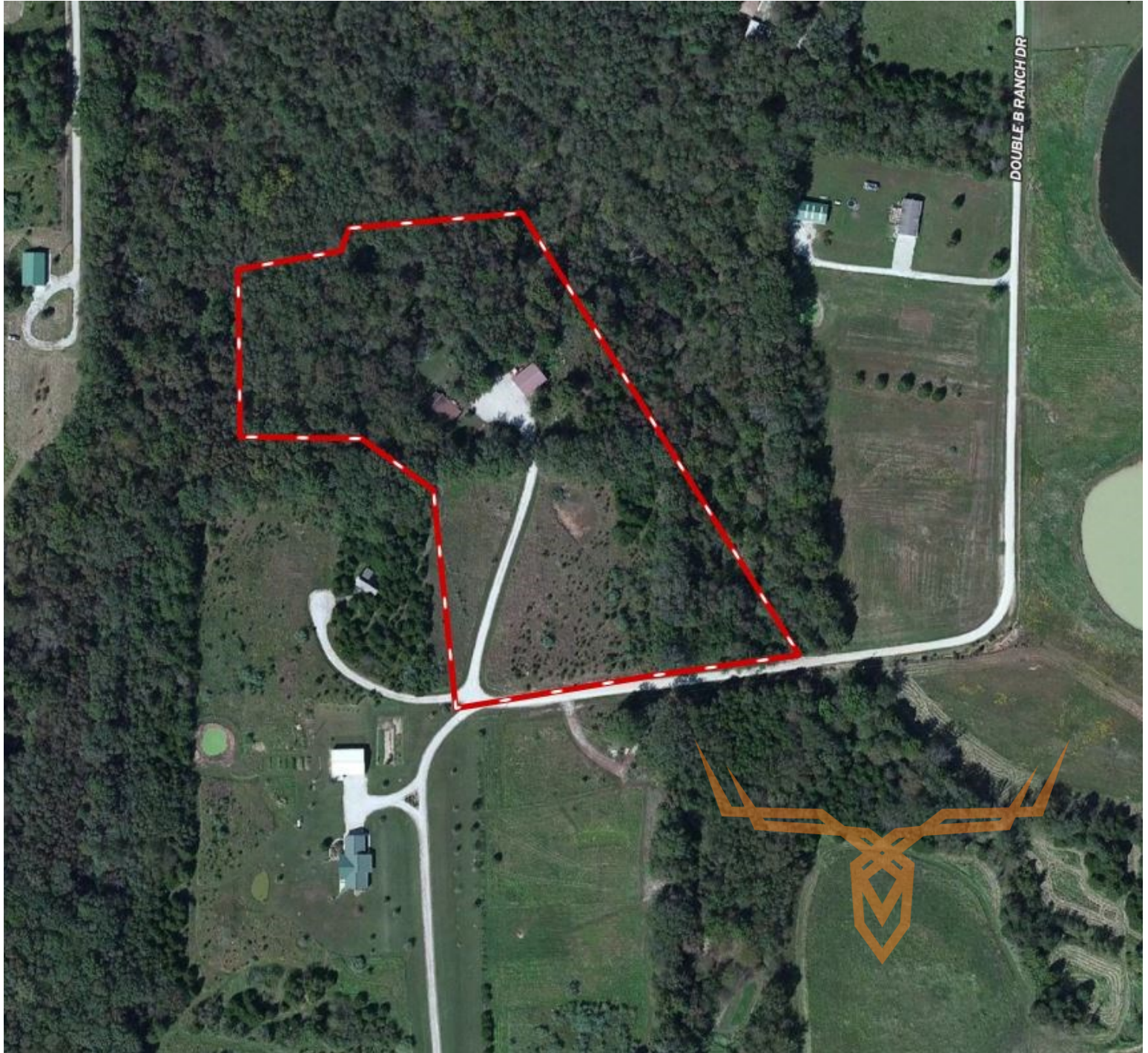
leads@trophypro.com



Turn-Key 7 +/- Acre Missouri Property with Cabin for Sale - Ralls County

T R O P H Y
PROPERTIES AND AUCTION
LAND | RECREATIONAL | RESIDENTIAL

Trophy Properties and Auction • 855.573.5263 • leads@trophy.com



Broker does not guarantee the accuracy of sq. ft., lot size, or other information, buyer is advised to independently verify the accuracy of information through personal inspection and with appropriate professionals