

TBD County Road 290 & 291

Nathrop, Colorado 81236



\$799,000

MLS #7371524

PROPERTY AT A GLANCE

27.49 Acres
Legal: TRACT IN NE4 26-15-79
Creek Frontage
Gas: Propane
Electric: Available
Phone: Available
Suitable for Grazing
Borders National Forest
Adjoining 35.02 Acres for sale; see
MLS #3988652



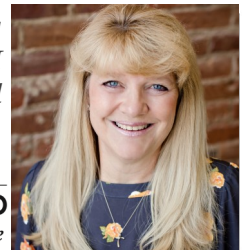
Stunning views of the Fourteeners,

capturing the Chalk Cliffs and Wrights Lake setting the stage for a most exquisite home site. This 27.68 acres +/- offers creek frontage, lush meadows for grazing, treed acreage for privacy and access to the areas most sought-after amenities and recreational activities. Easy access off two County Roads, a quick drive to either Buena Vista or Salida, nearby private airports and situated to take in the valley's best views. The adjoining property could be purchased together to make larger 60 acres +/- ranch or inquire with the County for other options. This property enjoys quite a bit of live water and is in the FEMA designated flood plain. A truly beautiful property, one of the last undeveloped parcels ideal for your dream home.



LISTING AGENT

Julie Kersting
General Manager/Broker, GRI
719-395-7840 Cell

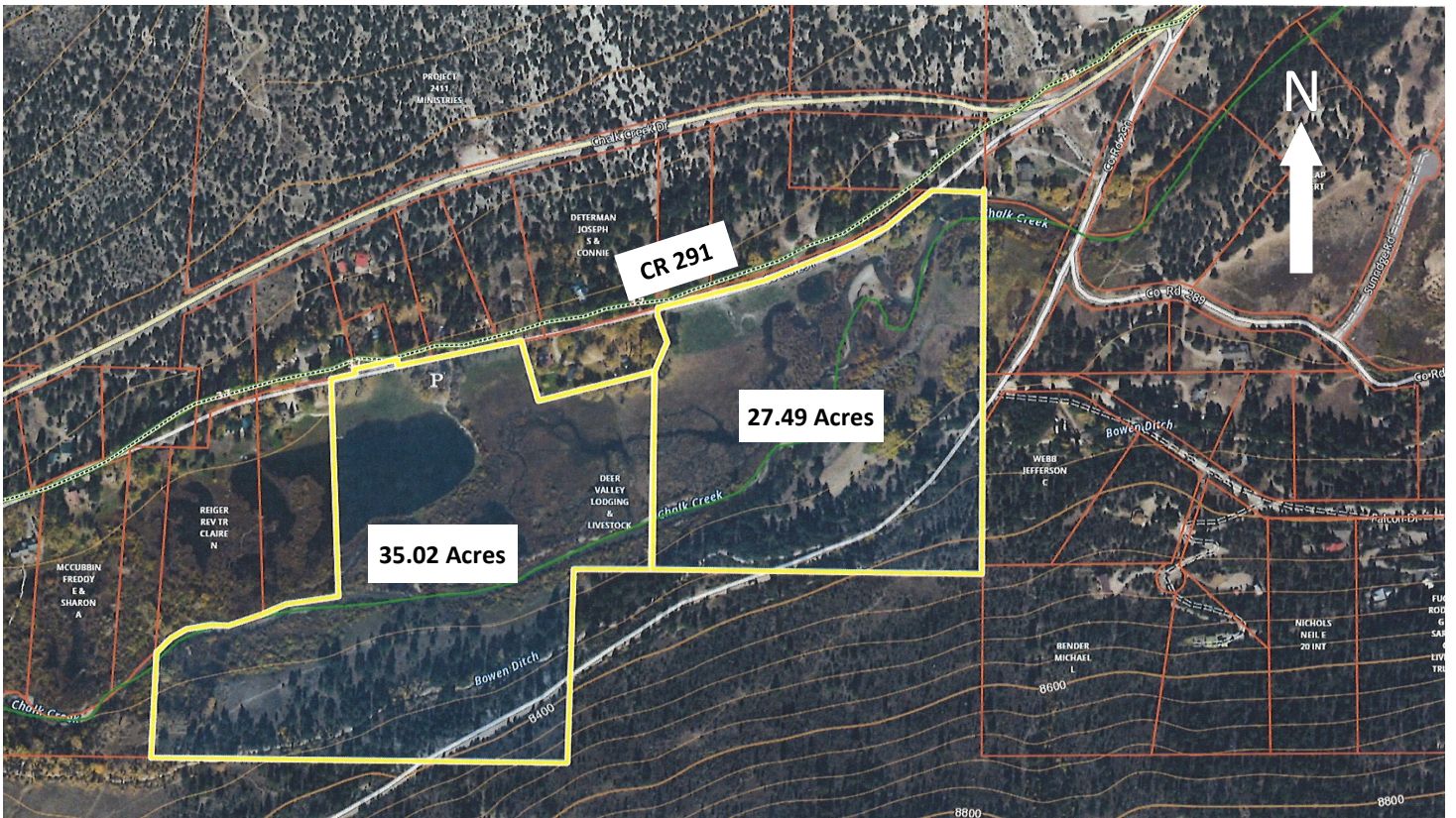


Julie@FirstColorado.com



FirstColoradoBV.com - 719-395-0200 - 306 E. Main Street, Buena Vista, CO 81211

ALL DATA, MEASUREMENTS, SQUARE FOOTAGE, ETC. DEEMED RELIABLE. NO WARRANTIES OR REPRESENTATIONS EXPRESSED OR IMPLIED.



Directions: From Buena Vista, take Highway 285 South to County Road 162 West past Mount Princeton Hot Springs and Silver Cliff Ranch to County Road 290 on the left.



FirstColoradoBV.com - 719-395-0200 - 306 E. Main Street, Buena Vista, CO 81211

ALL DATA, MEASUREMENTS, SQUARE FOOTAGE, ETC. DEEMED RELIABLE. NO WARRANTIES OR REPRESENTATIONS EXPRESSED OR IMPLIED.