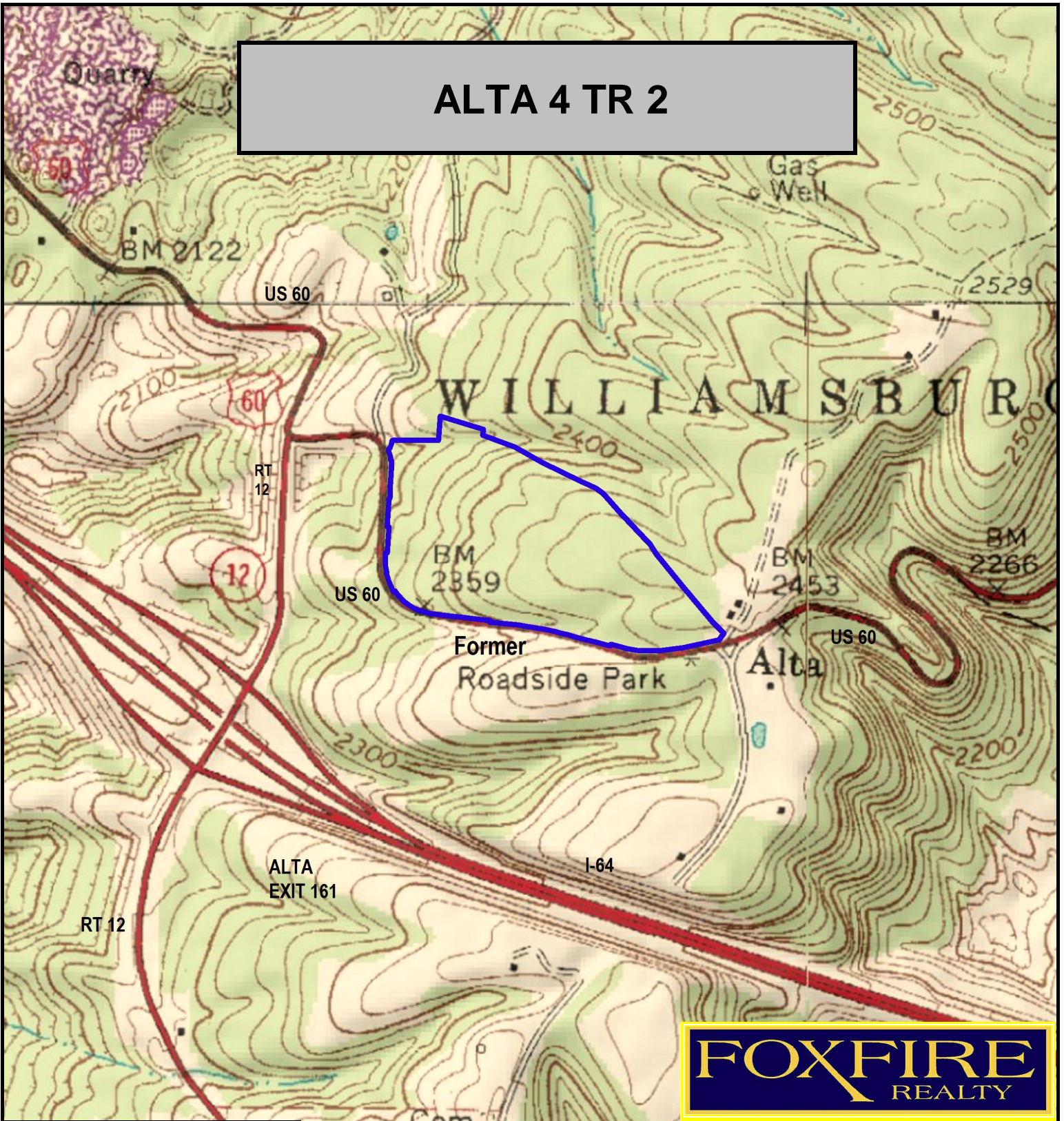


ALTA 4 TR 2



FOXFIRE
REALTY

ALTA 4 TR 2, Greenbrier County, WV
(topographic map)
Elevation Range: 2306' - 2502' +/-; Google Coordinates:
LAT 37.869571 (N), LON -80.543332 (W)
This map is for general location purposes only. Consult a licensed
land surveyor for actual boundary location and acreage.

RICHARD GRIST, Broker - Auctioneer - Forester
304.646.8837 Richard@Foxfirenation.com
WWW.FOXFIRENATION.COM



FOR TOPO

SCALE 1:9600

1 INCH = 800 FT.

