

LAND FOR SALE

LISTING #14892

PRICE: \$240,000

DESCRIPTION:

Offering 20 acres m/l of prime Warren County farmland located just east of R63 on the newly paved Nevada Street. This farm has approximately 19.27 acres currently being farmed with a CSR2 of 86.6. The location and views make this property the perfect place to build your dream home. If you like to develop large acreages, there are multiple building site possibilities.

ADDITIONAL INFO:

*Taxes listed are an estimation.

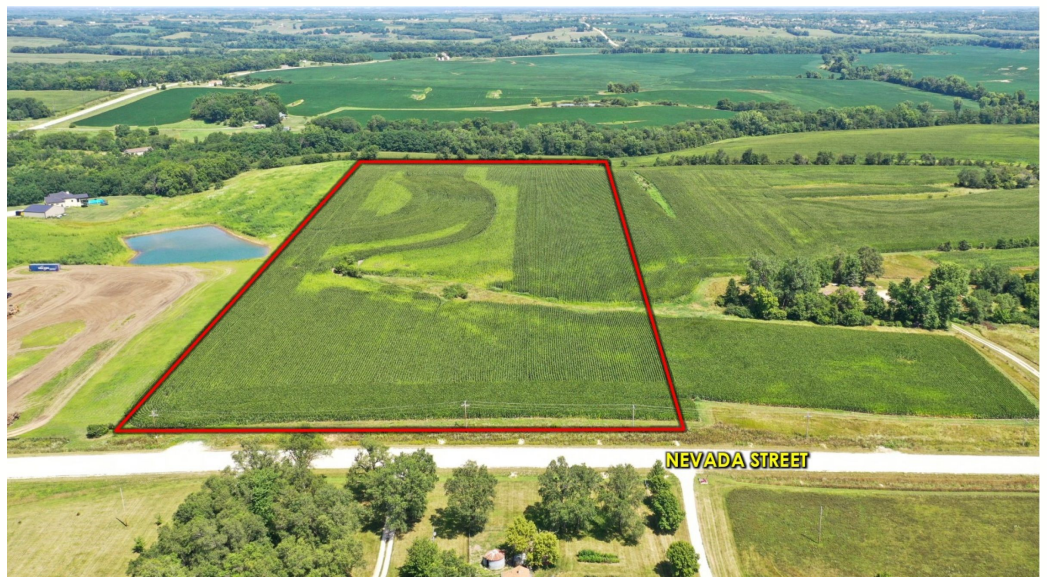
DARAN BECKER

C: 515.979.3498

O: 515.222.1347

Daran@PeoplesCompany.com

NEVEDA STREET WARREN CO., INDIANOLA, IOWA 50125



PeoplesCompany.com
855.800.LAND

12119 Stratford Dr, Ste B
Clive, Iowa 50325