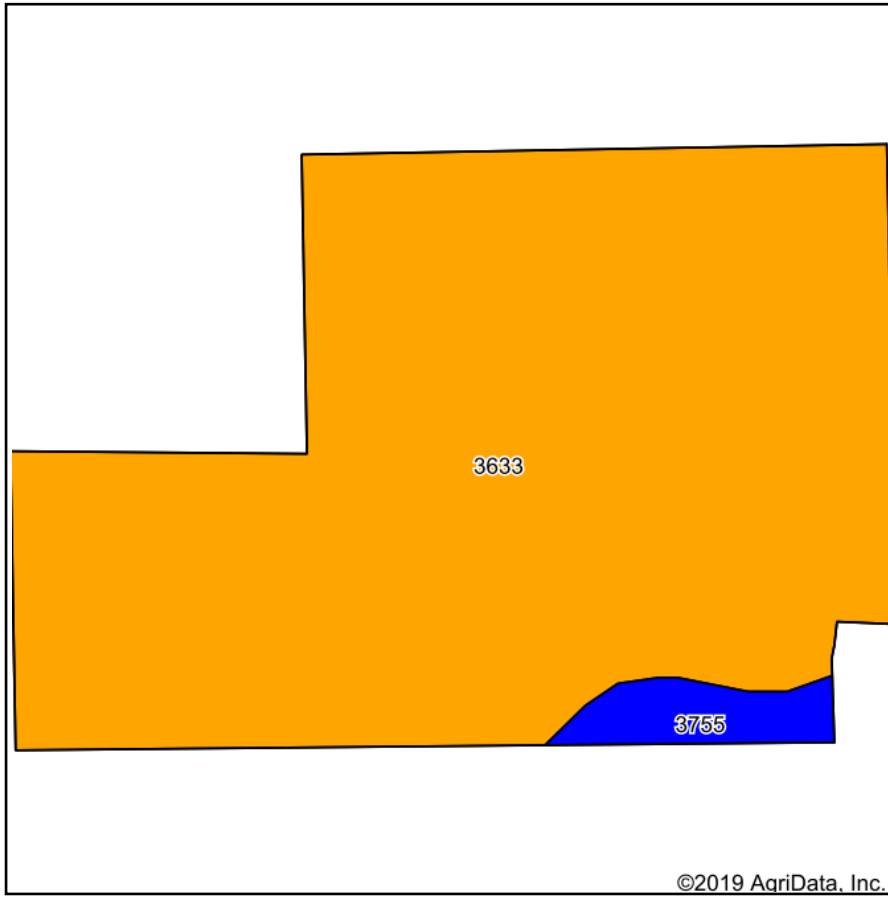
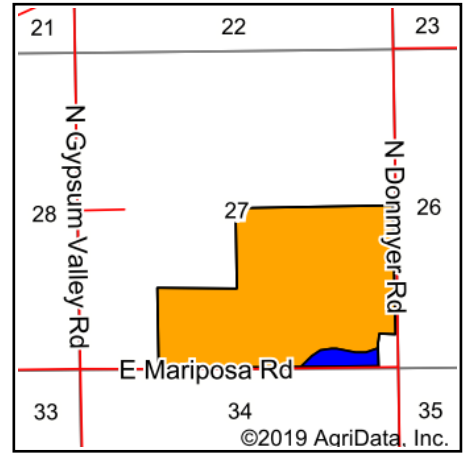


Soils Map



Soils data provided by USDA and NRCS.



State: **Kansas**
 County: **Saline**
 Location: **27-13S-1W**
 Township: **Dayton**
 Acres: **197**
 Date: **3/4/2020**



ANTRIM-PIPER
WENGER REALTORS®

Maps Provided By:



Area Symbol: KS169. Soil Area Version: 16

Code	Soil Description	Acres	Percent of field	Non-Irr Class Legend	Non-Irr Class *c	Irr Class *c	*n NCCPI Soybeans
3633	Sutphen silty clay, occasionally flooded	190.04	96.5%		IIIw	IIIw	45
3755	Hord silt loam, rarely flooded	6.96	3.5%		IIc	I	77
Weighted Average							*n 46.1

*n: The aggregation method is "Weighted Average using major components"

*c: Using Capabilities Class Dominant Condition Aggregation Method

Soils data provided by USDA and NRCS.