

All Measurements are  
For FSA Programs Only

**Wetland Determination Identifiers**

- Restricted Use
- ▽ Limited Restrictions
- Exempt from Conservation Compliance Provisions

Disclaimer: Wetland identifiers do not represent the size, shape or specific determination of the area. Refer to your original determination (CPA-026 and attached maps) for exact wetland boundaries and determinations, or contact NRCS.

**Nodaway Co. FSA**

All Crop Non Irrigated Unless Notated  
C=Com Yel GR ; CW=Com Whe GR  
SB=Soybn Com GR  
HRW=Wht HRW GR ; SRW=Wht SRW GR  
H=MIXFG IGS FG ; P=MIXFG IGS GZ  
FG=MIXFG LGM FG  
FTA=Grass FTA GZ ; LS=Grass FTA LS  
AGM=MIXFG AGM FG  
\*Unless notated on Map

1 inch equals 283 feet

**Program Year: 2019**

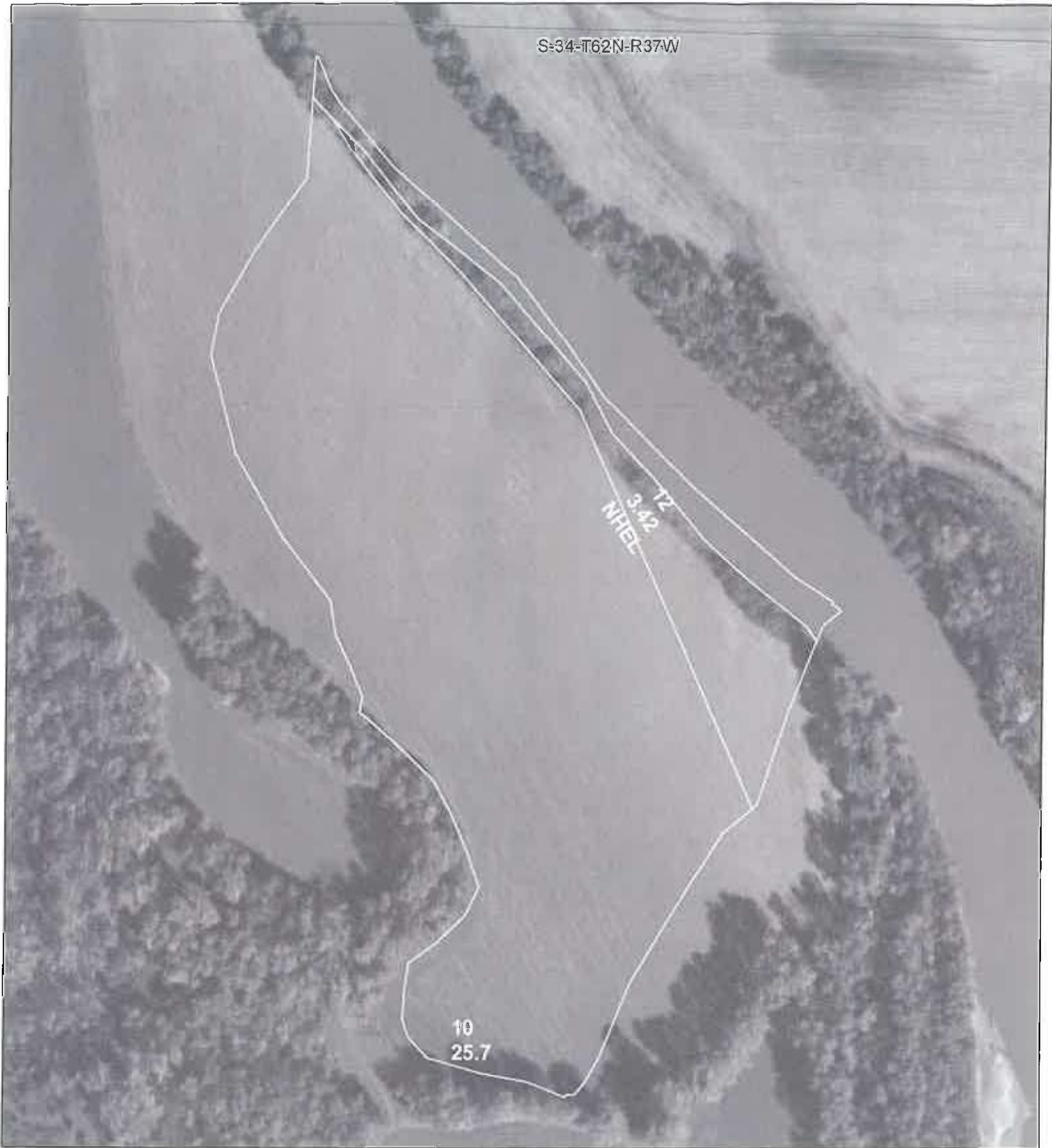
Created: 8/7/2019

Flown: 2018-10-16

- clu
- crp
- plss

**Farm 8378  
Tract 10923**





**All Measurements are  
For FSA Programs Only  
Wetland Determination Identifiers**

- Restricted Use
- ▽ Limited Restrictions
- Exempt from Conservation Compliance Provisions

**Disclaimer:** Wetland identifiers do not represent the size, shape or specific determination of the area. Refer to your original determination (CPA-026 and attached maps) for exact wetland boundaries and determinations, or contact NRCS.

**Nodaway Co. FSA**

All Crop Non Irrigated Unless Notated  
 C=Com Yel GR ; CW=Com Whe GR  
 SB=Soybn Com GR  
 HRW=Wht HRW GR ; SRW=Wht SRW GR  
 H=MIXFG IGS FG ; P=MIXFG IGS GZ  
 FG=MIXFG LGM FG  
 FTA=Grass FTA GZ ; LS=Grass FTA LS  
 AGM=MIXFG AGM FG  
 \*Unless notated on Map

1 inch equals 268 feet

**Program Year: 2019**

Created: 8/7/2019

Flown: 2018-10-16



- clu
- crp
- plss

**Farm 8378  
Tract 10924**