



136 +/- Acre Missouri Land on Beaver Creek for Sale - Taney County

T R O P H Y
PROPERTIES AND AUCTION
LAND | RECREATIONAL | RESIDENTIAL

www.TrophyPA.com • (855) 573-5263 • leads@trophypa.com

PRICE IMPROVED



PROPERTY ADDRESS:

578 Howell Drive
Taneyville, MO 65759

PRICE: \$408,000

ACRES: 136

COUNTY: Taney

PROPERTY HIGHLIGHTS:

- 136 +/- Acres
- 0.4 of a mile of Beaver Creek frontage
- Approximately 40 acres of creek bottoms
- Fenced and cross fenced
- 2 bed/1 bath ranch style home
- Bonus single wide trailer home
- Whitetail deer hunting
- 30 minutes to Branson, Mo

PROPERTY DESCRIPTION:

136 +/- acres for sale on beautiful Beaver Creek 30 minutes from Branson, Missouri. Kayaking, fishing, and whitetail deer!!! This property has bottom land pasture for cattle and hay, it also has timber and cedar thickets for deer hunters! Mark Twain National Forest is also only a 1/4 mile away!

Property has a 1,156 sq. ft. 2 bed/1 bath home with attached 2 car garage! Bonus residence is a single wide trailer.



PRESENTED BY:

NATHAN ANDERSON

Land Specialist - MO

M: (417) 312-5570

P: (855) 573-5263 x740

E: nanderson@trophypa.com

Trophy Properties and Auction

15480 Clayton Road

Suite 101

Ballwin, MO 63011

www.Trophypa.com

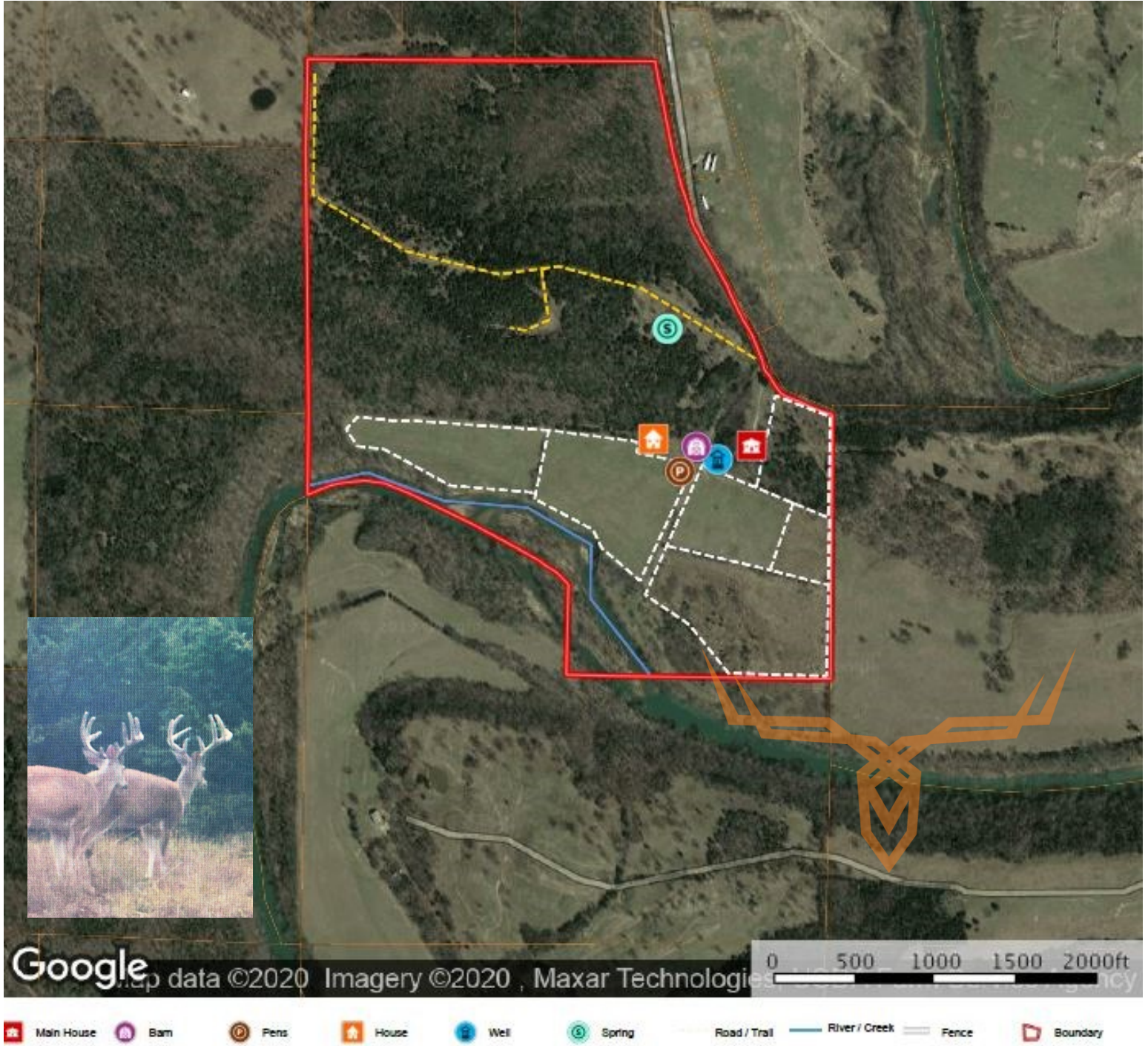
leads@trophypa.com



T R O P H Y
PROPERTIES AND AUCTION
LAND | RECREATIONAL | RESIDENTIAL

136 +/- Acre Missouri Land on Beaver Creek for Sale - Taney County

www.TrophyPA.com • (855) 573-5263 • leads@trophyPA.com



Broker does not guarantee the accuracy of sq. ft., lot size, or other information, buyer is advised to independently verify the accuracy of information through personal inspection and with appropriate professionals