

# FOR SALE

Bartholomew  
County

Rock Creek  
Township

# 100+/- acres

## LOCATION

Tract 1 - 300 S and 1200 E

Tract 2 - SE Corner 400 S and 800 E

## ZONING

Agricultural

## TOPOGRAPHY

Level - Gently Rolling

## SCHOOL DISTRICT

Bartholomew County  
Consolidated Schools

## ANNUAL TAXES

Tract 1 - \$1,313.48

Tract 2 - \$1051.64

100% PATTERN TILED

PRODUCTIVE FARMLAND / HIGH % TILLABLE



**TRACT 1 - 57.2+/- Tillable**



**TRACT 2 - 39+/- Tillable**



Dave Bonnell  
Columbus, IN  
812.343.4313  
daveb@halderman.com



Michael Bonnell  
Shelbyville, IN  
812.343.6036  
michaelb@halderman.com



OWNER: Meier Family  
**HALDERMAN**  
REAL ESTATE & FARM MANAGEMENT

800.424.2324 | [www.halderman.com](http://www.halderman.com)





**HALDERMAN**  
REAL ESTATE & FARM MANAGEMENT

PO Box 297 • Wabash, IN 46992

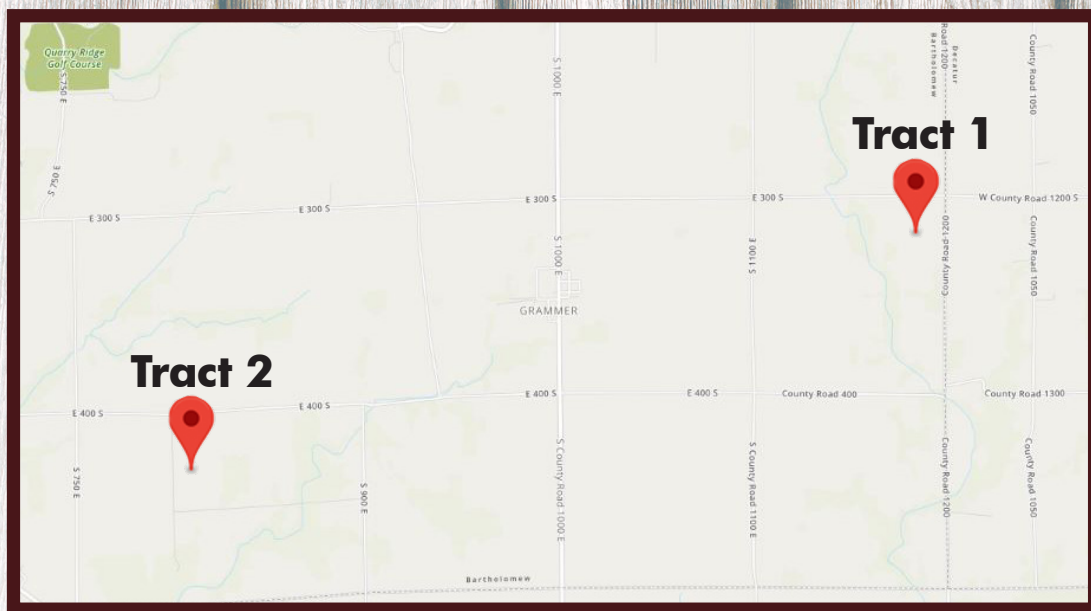
# FOR SALE

Bartholomew County | Rock Creek Township

## LOCATION

Tract 1 - 300 S and 1200 E  
Elizabethtown, IN 47232

Tract 2 - 400 S and 800 E  
Elizabethtown, IN 47232

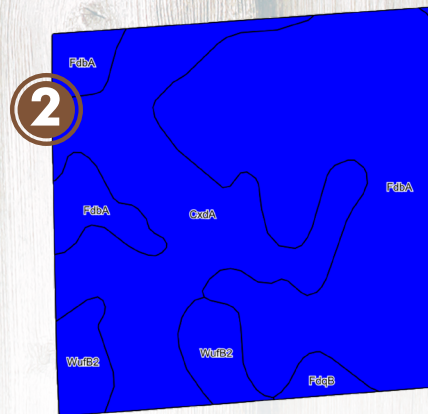
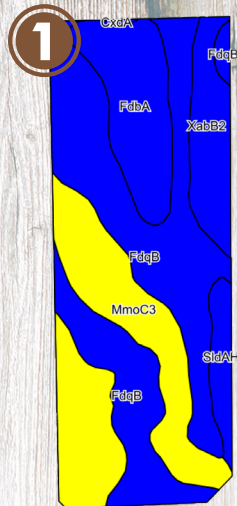


## Tract 1

Code	Soil Description	Acres	Percent of Field	Corn	Soybeans
FdqB	Fincastle-Xenia silt loams, 2 to 4 percent slopes	24.97	44.6%	164	54
MmoC3	Miami clay loam, 6 to 12 percent slopes, severely eroded	15.60	27.8%	121	41
FdbA	Fincastle silt loam, 0 to 2 percent slopes	8.03	14.3%	166	54
XabB2	Xenia silt loam, 2 to 6 percent slopes, eroded	5.13	9.2%	152	53
SldAH	Shoals silt loam, 0 to 2 percent slopes, frequently flooded, brief duration	2.22	4.0%	125	43
CxdA	Cyclone silty clay loam, 0 to 2 percent slopes	0.09	0.2%	185	65
Weighted Average				149.7	49.9

## Tract 2

FdbA	Fincastle silt loam, 0 to 2 percent slopes	21.78	55.9%	166	54
CxdA	Cyclone silty clay loam, 0 to 2 percent slopes	13.46	34.5%	185	65
WufB2	Williamstown silt loam, 2 to 6 percent slopes, eroded	3.04	7.8%	142	48
FdqB	Fincastle-Xenia silt loams, 2 to 4 percent slopes	0.69	7.8%	164	54
Weighted Average				170.7	57.3



# Soil Info