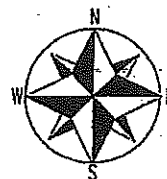
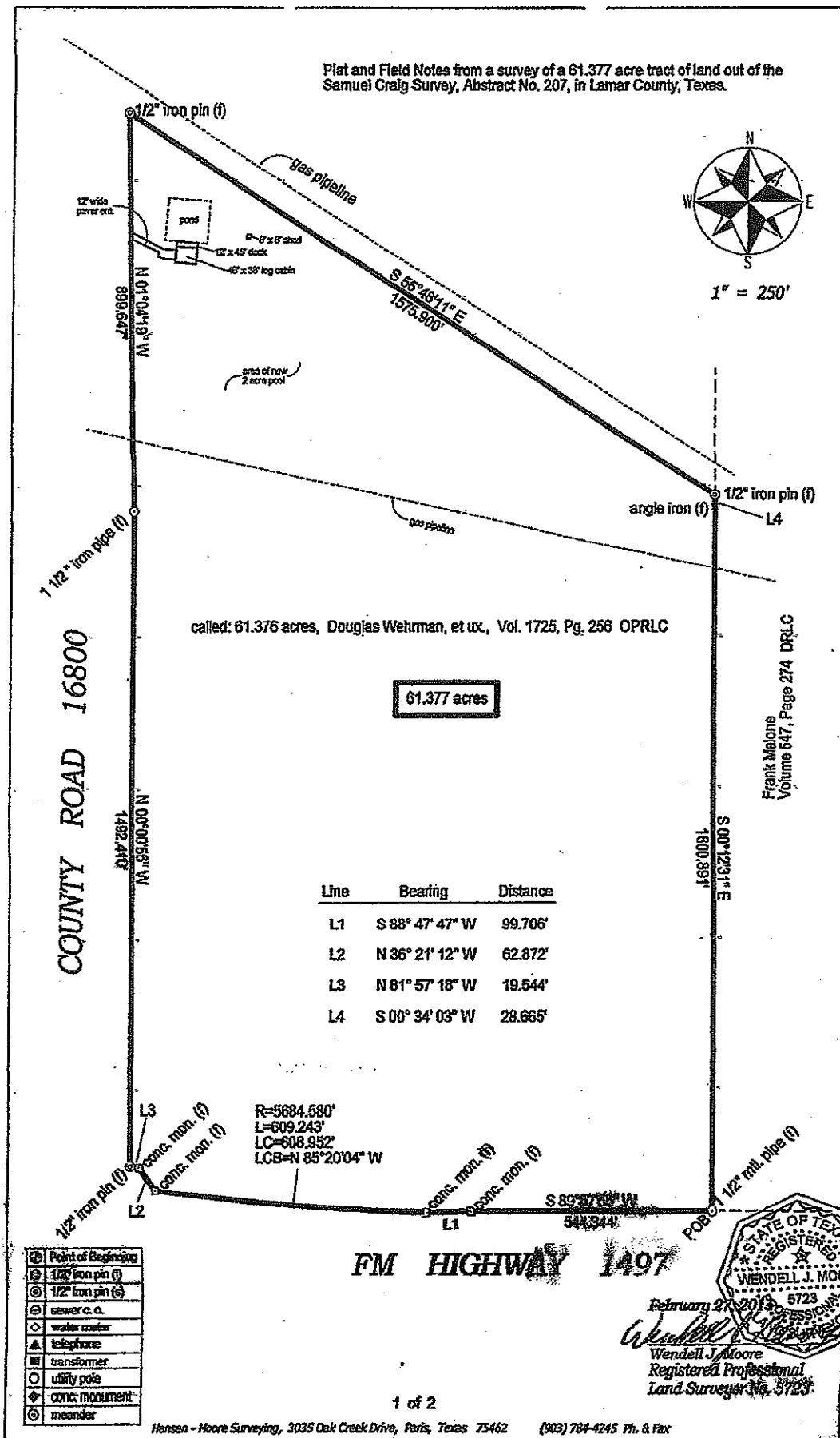


Cabin
Place

Plat and Field Notes from a survey of a 61.377 acre tract of land out of the Samuel Craig Survey, Abstract No. 207, in Lamar County, Texas.



1" = 250'



All that certain tract or parcel of land situated about 16 miles South 25° East from the City of Paris, in Lamar County, Texas; part of the Samuel Craig Survey, Abstract No. 207, and being all of the called 61.376 acre tract of land described in a Deed to Douglas Wehrman, et ux., and recorded in Volume 1725, Page 256, of the Official Public Records of Lamar County, and being more particularly described as follows, to wit:

Beginning at a 1 1/2" iron pipe (found) for a corner in a North Line of FM Highway 1497, same being the Southeast corner of said 61.376 acre tract; and same also being the Southwest corner of a tract of land described in a Deed to Frank Malone, and recorded in Volume 547, Page 274, of the Deed Records of Lamar County

Thence S 89° 57' 55" W along a South Line of said 61.376 acre tract and along a North Line of said Highway 1497, a distance of 544.344', to a concrete highway monument (found);

Thence S 88° 47' 47" W along a South Line of said 61.376 acre tract and along a North Line of said Highway 1497, a distance of 99.706', to a concrete highway monument (found) at beginning of a curve;

Thence in a Northwestern direction around a clockwise curve having an arc distance of 609.243', a radius of 5684.580', and a chord of N 85° 20' 04" W, 608.952', to a concrete highway monument (found) for a corner, same being the most Southerly Southwest corner of said 61.376 acre tract;

Thence N 36° 21' 12" W along a Northeast Line of said Highway 1497 and along a Southwest Line of said 61.376 acre tract, a distance of 62.892', to a concrete highway monument (found) for an inside corner;

Thence N 81° 57' 18" W along a North Line of said 61.376 acre tract and along a North Line of said Highway 1497, a distance of 19.544', to a 1/2" iron pin (found) for a corner in the intersection of a North Line of said Highway 1497 with an East Line of County Road 16800, same being the most Westerly Southwest corner of said 61.376 acre tract;

Thence N 00° 00' 56" W along a West Line of said 61.376 acre tract and along an East Line of said County Road, a distance of 1492.410', to a 1 1/2" iron pipe (found);

Thence N 01° 04' 19" W along a West Line of said 61.376 acre tract and along an East Line of said County Road, a distance of 899.647', to a 1/2" iron pin (found) for a corner in a Southwest Line of a gas pipeline, same being the Northwest corner of said 61.376 acre tract;


Thence S 56° 48' 11" E along the Northeast Line of said 61.376 acre tract and along a Southwest Line of said pipeline, a distance of 1575.900', to a 1/2" iron pin (found) for a corner in a West Line of said Malone tract, same being the Northeast corner of said 61.376 acre tract;

Thence S 00° 34' 03" W along an East Line of said 61.376 acre tract and along a West Line of said Malone tract, a distance of 28.665', to an angle iron (found) in an angle point;

Thence S 00° 34' 03" W along an East Line of said 61.376 acre tract and along a West Line of said Malone tract, a distance of 1600.891', to the *Place of Beginning* and containing 61.377 acres of land.

The bearings recited herein are based upon the Deed call of the most Southerly West Line of said 61.376 acre tract, being N 00° 00' 56" W. This description was prepared from an actual survey made on the ground and under my supervision, with field notes completed February 27, 2011.

February 27, 2011


Wendell J. Moore
Registered Professional
Land Surveyor No. 5723

