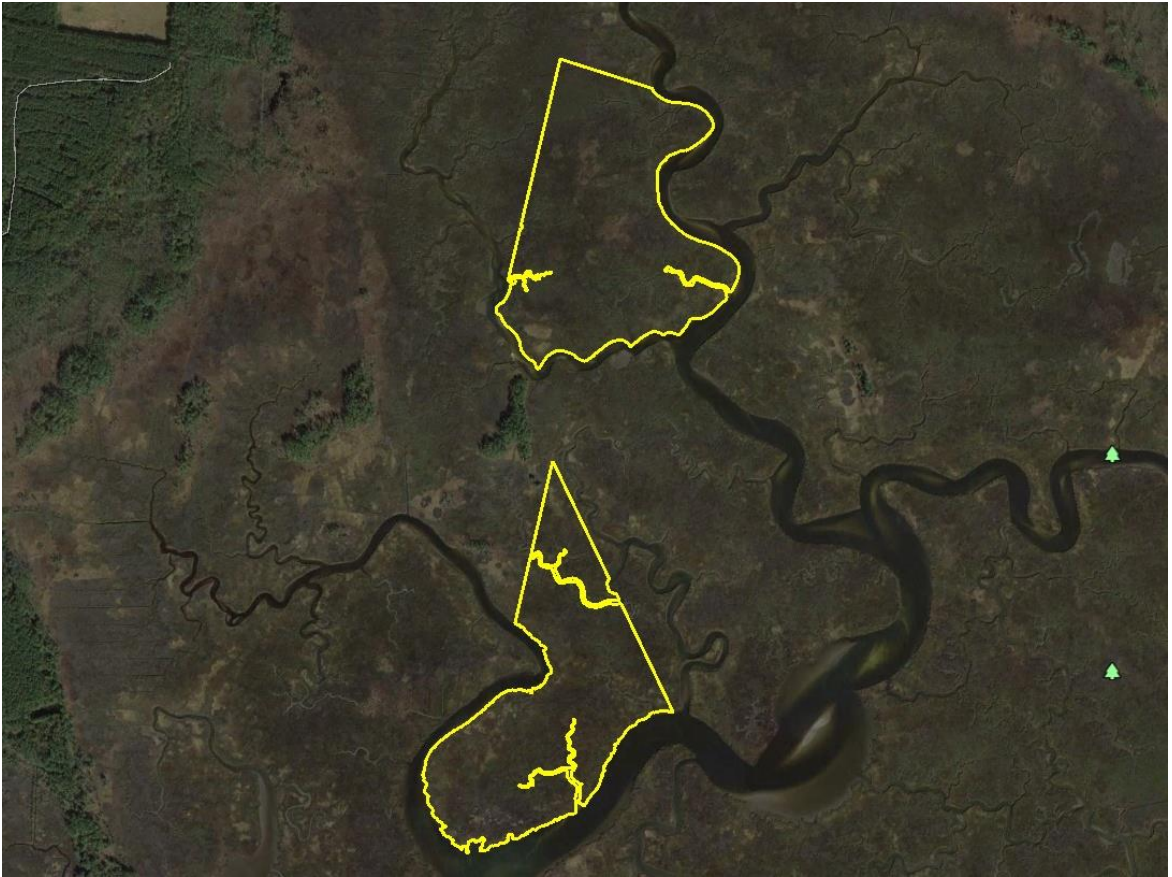


# THE LAND GROUP

## Ellis Bay Marsh



Doug Williams

[doug@thelandgroup.us](mailto:doug@thelandgroup.us)

410-726-1831

150 West Market Street, Suite 102 | Salisbury, MD 21801 | [www.thelandgroup.us](http://www.thelandgroup.us)

**We Sell  
Dirt.**

# THE LAND GROUP



---

Muddy Hole Road | Nanticoke, MD 21840

---

## PROPERTY OVERVIEW

**TOTAL ACREAGE:** 145.84  
**COUNTY:** Wicomico  
**PRICE PER ACRE:**  
**SALE PRICE:** \$160,400

145.84+- acres located on the marsh at north end of Ellis Bay. Recent survey recorded in land records. One tract sites at the mouth of Muddy Creek and Broad Creek right on Ellis Bay, the other is located just north of that. Waterfowl hunters paradise with open water and numerous guts and creeks through out. Sika deer are also established in the Ellis Bay WMA. Easy access from public ramps at Nanticoke, Clara Rd, Mt Vernon and Dames Quarter. Accessible by boat only!!!

Doug Williams

doug@thelandgroup.us

410-726-1831