

BOUNDARY SURVEY
FOR THE LANDS OF
Pocomoke Realty
NANTICOK ELECTION DISTRICT
WICOMICO COUNTY, MARYLAND

PLAY WAS USED AS A TOOL TO CONFIRM THAT WE HAD ALREADY SUSPECTED. WE DID FIND THE PATENT IN THE AREA OF THE MOUNTAINS, BUT WE WERE NOT SURE OF THE LOCATION. THE DESCRIPTION OF "RUSSIA" THAT IT REALLY BELONGS NORTHWESTERLY OF THE PATENT AND THE AREA OF THE MOUNTAINS, BUT WE WERE NOT SURE OF THE LOCATION. THE LOCATION OF ITS LOCATION IN THE DEED OF LAND AGREEMENT PREVIOUSLY MENTIONED (153/581) WAS NOT THE SAME AS THE LOCATION OF THE PATENT. THE LOCATION OF THE PATENT WAS THE FACT THAT MR. MILES MAKES NOTE THAT THE PATENT "WAS NOT IN THE AREA OF THE MOUNTAINS AND INLAND FISH HOLDING, EVEN THOUGH THE PATENT WAS PLACED IN THE AREA OF THE HOLDING. PROVIDE MORE FROM THAT ISSUE LATER IN THIS NARRATIVE.

YOU'LL NOTE ON OUR PLAY THAT WE HAVE THE SOUTHERLY BOUNDARY LINES FOR THE PLAY AND THE SOUTHERLY BOUNDARY LINES FOR THE PLAY. THE PLAY WAS USED AS A TOOL TO CONFIRM THAT WE HAD ALREADY SUSPECTED. WE DID FIND THE PATENT IN THE AREA OF THE MOUNTAINS, BUT WE WERE NOT SURE OF THE LOCATION. THE DESCRIPTION OF "RUSSIA" THAT IT REALLY BELONGS NORTHWESTERLY OF THE PATENT AND THE AREA OF THE MOUNTAINS, BUT WE WERE NOT SURE OF THE LOCATION. THE LOCATION OF ITS LOCATION IN THE DEED OF LAND AGREEMENT PREVIOUSLY MENTIONED (153/581) WAS NOT THE SAME AS THE LOCATION OF THE PATENT. THE LOCATION OF THE PATENT WAS THE FACT THAT MR. MILES MAKES NOTE THAT THE PATENT "WAS NOT IN THE AREA OF THE MOUNTAINS AND INLAND FISH HOLDING, EVEN THOUGH THE PATENT WAS PLACED IN THE AREA OF THE HOLDING. PROVIDE MORE FROM THAT ISSUE LATER IN THIS NARRATIVE.

[illegible]

LEGEND:

- IRON ROD W
- △ UNMARKED

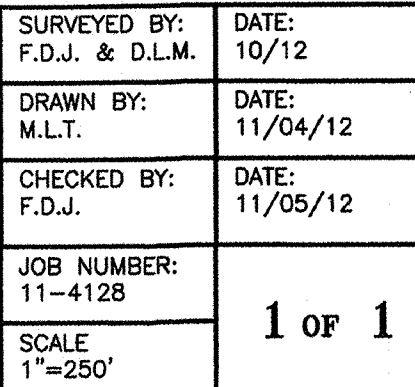
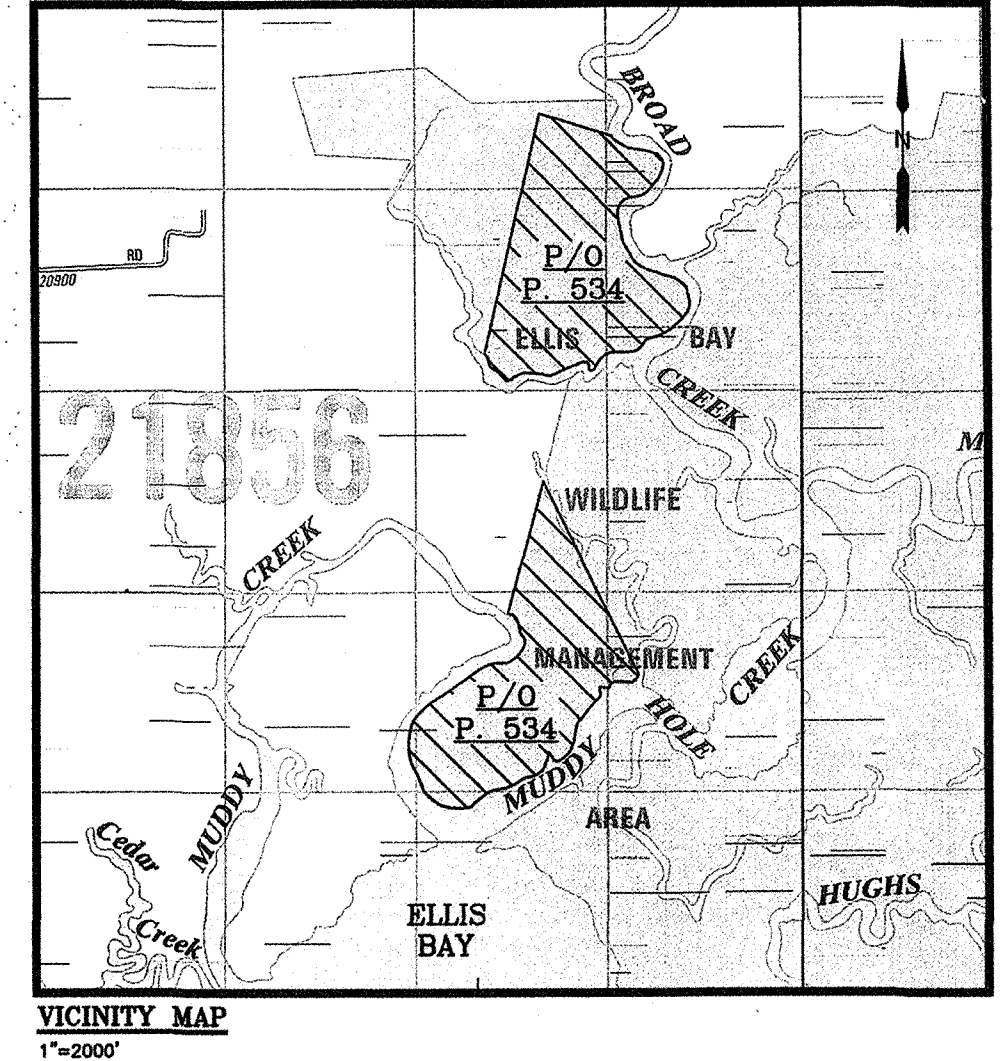
NOTES:

1. TAX MAP NO.
2. PLAT REFERENCE
3. ZONED: A-
4. A LICENSED SURVEYOR OF THE SURVEY WAS PERFORMED BY THE "MINNERYLAND" NO TITLE IS OF THIS ENCUMBRANCE SHOWN HEREIN
6. BEARINGS SOLUTION

NOTES:

1. MAP NO. 63, PARCEL 534 (DEED REF: 674/516)
2. PLAT REFERENCES: AS NOTED
3. ZONED: A-1 (AGRICULTURAL-RURAL)
4. A LICENSED SURVEYOR EITHER PERSONALLY PREPARED THE SURVEY OR WAS IN RESPONSIBLE CHARGE OVER ITS. THE SURVEYING WORK REFLECTED IN IT. ALL RELATIVES WAS PERFORMED IN COMPLIANCE WITH THE REQUIREMENTS OF THE "MINIMUM STANDARDS OF PRACTICE" ESTABLISHED BY THE MARYLAND SURVEYING BOARD.
5. NO TITLE SEARCH WAS PERFORMED OR REQUESTED DURING THIS SURVEY AND ANY EASEMENTS, RIGHTS OF WAY OR ENCUMBRANCES WHICH A TITLE SEARCH WOULD IDENTIFY WERE UNKNOWN HEREON.
6. BEARINGS & MD. STATE PLANE COORDINATES ARE BASED ON THE SOLUTION & REPORT.

LINE LIST TABLE					
LINE	BEARING	DISTANCE	LINE	BEARING	DISTANCE
1	86°09'11" W	69.49	2	S 23°48'48" E	186.69
2	S 86°09'11" W	163.21	3	S 80°30'40" E	25.34
3	S 86°09'11" W	163.21	4	S 86°09'11" W	88.23
4	S 48°13'54" W	136.07	5	S 09°18'41" E	81.20
5	S 28°30'58" W	237.28	6	S 00°01'11" W	29.11
6	S 28°30'58" W	237.28	7	S 28°30'58" W	191.16
7	S 37°34'31" W	173.29	8	S 34°22'40" W	134.10
8	S 37°34'31" W	173.29	9	S 06°45'18" E	168.42
9	S 70°00'15" W	330.23	10	S 49°57'18" E	284.20
10	S 78°12'19" W	324.38	11	S 49°57'18" E	284.20
11	N 88°12'19" E	124.32	12	S 88°12'19" E	80.30
12	S 28°42'44" W	407.41	13	S 11°02'45" E	183.83
13	S 28°42'44" W	407.41	14	S 11°02'45" E	183.83
14	S 27°48'05" E	128.13	15	S 27°48'05" E	128.13
15	S 27°48'05" E	128.13	16	S 73°59'18" E	206.92
16	S 27°48'05" E	128.13	17	S 73°59'18" E	206.92
17	S 48°13'54" W	136.07	18	S 09°18'41" E	81.20
18	S 48°13'54" W	136.07	19	S 09°18'41" E	81.20
19	S 48°13'54" W	136.07	20	S 09°18'41" E	81.20
20	S 48°13'54" W	136.07	21	S 09°18'41" E	81.20
21	S 48°13'54" W	136.07	22	S 09°18'41" E	81.20
22	S 48°13'54" W	136.07	23	S 09°18'41" E	81.20
23	S 48°13'54" W	136.07	24	S 09°18'41" E	81.20
24	S 48°13'54" W	136.07	25	S 09°18'41" E	81.20
25	S 48°13'54" W	136.07	26	S 09°18'41" E	81.20
26	S 48°13'54" W	136.07	27	S 09°18'41" E	81.20
27	S 48°13'54" W	136.07	28	S 09°18'41" E	81.20
28	S 48°13'54" W	136.07	29	S 09°18'41" E	81.20
29	S 48°13'54" W	136.07	30	S 09°18'41" E	81.20
30	S 48°13'54" W	136.07	31	S 09°18'41" E	81.20
31	S 48°13'54" W	136.07	32	S 09°18'41" E	81.20
32	S 48°13'54" W	136.07	33	S 09°18'41" E	81.20
33	S 48°13'54" W	136.07	34	S 09°18'41" E	81.20
34	S 48°13'54" W	136.07	35	S 09°18'41" E	81.20
35	S 48°13'54" W	136.07	36	S 09°18'41" E	81.20
36	S 48°13'54" W	136.07	37	S 09°18'41" E	81.20
37	S 48°13'54" W	136.07	38	S 09°18'41" E	81.20
38	S 48°13'54" W	136.07	39	S 09°18'41" E	81.20
39	S 48°13'54" W	136.07	40	S 09°18'41" E	81.20
40	S 48°13'54" W	136.07	41	S 09°18'41" E	81.20
41	S 48°13'54" W	136.07	42	S 09°18'41" E	81.20
42	S 48°13'54" W	136.07	43	S 09°18'41" E	81.20
43	S 48°13'54" W	136.07	44	S 09°18'41" E	81.20
44	S 48°13'54" W	136.07	45	S 09°18'41" E	81.20
45	S 48°13'54" W	136.07	46	S 09°18'41" E	81.20
46	S 48°13'54" W	136.07	47	S 09°18'41" E	81.20
47	S 48°13'54" W	136.07	48	S 09°18'41" E	81.20
48	S 48°13'54" W	136.07	49	S 09°18'41" E	81.20
49	S 48°13'54" W	136.07	50	S 09°18'41" E	81.20
50	S 48°13'54" W	136.07	51	S 09°18'41" E	81.20
51	S 48°13'54" W	136.07	52	S 09°18'41" E	81.20
52	S 48°13'54" W	136.07	53	S 09°18'41" E	81.20
53	S 48°13'54" W	136.07	54	S 09°18'41" E	81.20
54	S 48°13'54" W	136.07	55	S 09°18'41" E	81.20
55	S 48°13'54" W	136.07	56	S 09°18'41" E	81.20
56	S 48°13'54" W	136.07	57	S 09°18'41" E	81.20
57	S 48°13'54" W	136.07	58	S 09°18'41" E	81.20
58	S 48°13'54" W	136.07	59	S 09°18'41" E	81.20
59	S 48°13'54" W	136.07	60	S 09°18'41" E	81.20
60	S 48°13'54" W	136.07	61	S 09°18'41" E	81.20
61	S 48°13'54" W	136.07	62	S 09°18'41" E	81.20
62	S 48°13'54" W	136.07	63	S 09°18'41" E	81.20
63	S 48°13'54" W	136.07	64	S 09°18'41" E	81.20
64	S 48°13'54" W	136.07	65	S 09°18'41" E	81.20
65	S 48°13'54" W	136.07	66	S 09°18'41" E	81.20
66	S 48°13'54" W	136.07	67	S 09°18'41" E	81.20
67	S 48°13'54" W	136.07	68	S 09°18'41" E	81.20
68	S 48°13'54" W	136.07	69	S 09°18'41" E	81.20
69	S 48°13'54" W	136.07	70	S 09°18'41" E	81.20
70	S 48°13'54" W	136.07	71	S 09°18'41" E	81.20
71	S 48°13'54" W	136.07	72	S 09°18'41" E	81.20
72	S 48°13'54" W	136.07	73	S 09°18'41" E	81.20
73	S 48°13'54" W	136.07	74	S 09°18'41" E	81.20
74	S 48°13'54" W	136.07	75	S 09°18'41" E	81.20
75	S 48°13'54" W	136.07	76	S 09°18'41" E	81.20
76	S 48°13'54" W	136.07	77	S 09°18'41" E	81.20
77	S 48°13'54" W	136.07	78	S 09°18'41" E	81.20
78	S 48°13'54" W	136.07	79	S 09°18'41" E	81.20
79	S 48°13'54" W	136.07	80	S 09°18'41" E	81.20
80	S 48°13'54" W	136.07	81	S 09°18'41" E	81.20
81	S 48°13'54" W	136.07	82	S 09°18'41" E	81.20
82	S 48°13'54" W	136.07	83	S 09°18'41" E	81.20
83	S 48°13'54" W	136.07	84	S 09°18'41" E	81.20
84	S 48°13'54" W	136.07	85	S 09°18'41" E	81.20
85	S 48°13'54" W	136.07	86	S 09°18'41" E	81.20
86	S 48°13'54" W	136.07	87	S 09°18'41" E	81.20
87	S 48°13'54" W	136.07	88	S 09°18'41" E	81.20
88	S 48°13'54" W	136.07	89	S 09°18'41" E	81.20
89	S 48°13'54" W	136.07	90	S 09°18'41" E	81.20
90	S 48°13'54" W	136.07	91	S 09°18'41" E	81.20
91	S 48°13'54" W	136.07	92	S 09°18'41" E	81.20
92	S 48°13'54" W	136.07	93	S 09°18'41" E	81.20
93	S 48°13'54" W	136.07	94	S 09°18'41" E	81.20
94	S 48°13'54" W	136.07	95	S 09°18'41" E	81.20
95	S 48°13'54" W	136.07	96	S 09°18'41" E	81.20
96	S 48°13'54" W	136.07	97	S 09°18'41" E	81.20
97	S 48°13'54" W	136.07	98	S 09°18'41" E	81.20
98	S 48°13'54" W	136.07	99	S 09°18'41" E	81.20
99	S 48°13'54" W	136.07	100	S 09°18'41" E	81.20



P199569 M3A SSu 1256 6844