



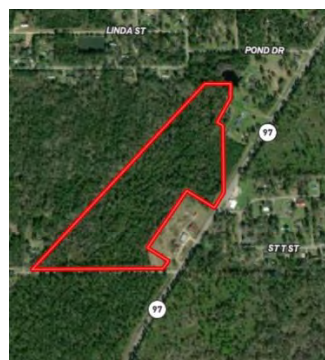
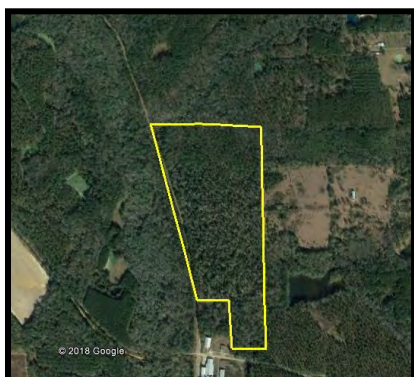
Property Information Packet

**Bower Tracts,
88.61 +/- Acres, Old Southland Rd.
60 Acres Millwhite Road
28 Acres Horseshoe Bend Rd/Hwy 97
Decatur County, GA
Mixed Woods, Timber Production**

Daniel E. Crocker
Member Thomasville Area Board REALTORS
Mobile: (229) 403-6297
Fax: (229) 226-6532
crocker@rose.net
www.landcroc.com
CROCKER REALTY, INC
1207 E. Jackson St.,
Thomasville, GA 31792



**SHOWN ABOVE: 88.61 +/- ACRES OLD SOUTHLAND ROAD
SHOWN BELOW: 60 +/- ACRES MILLWHITE ROAD**



All Property Line Drawings are Approximate and taken from County Tax Assessor Website.

Details (MLS Data)

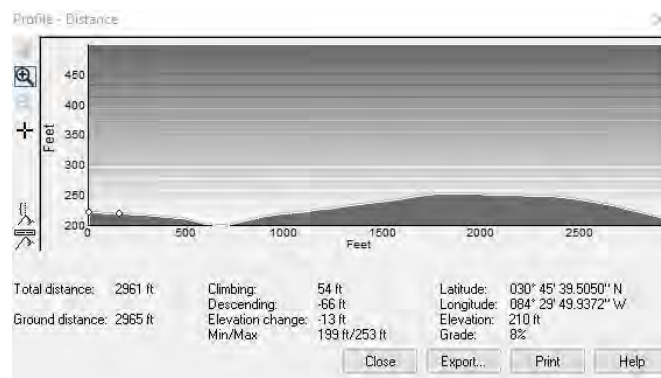
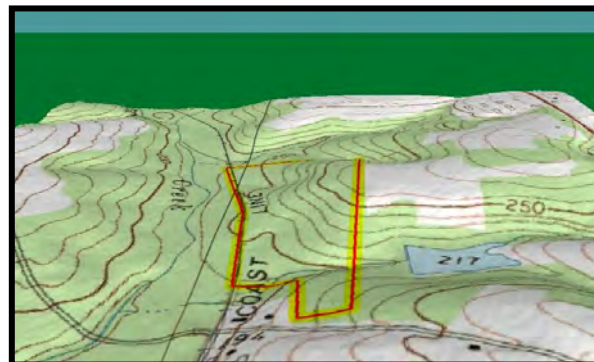
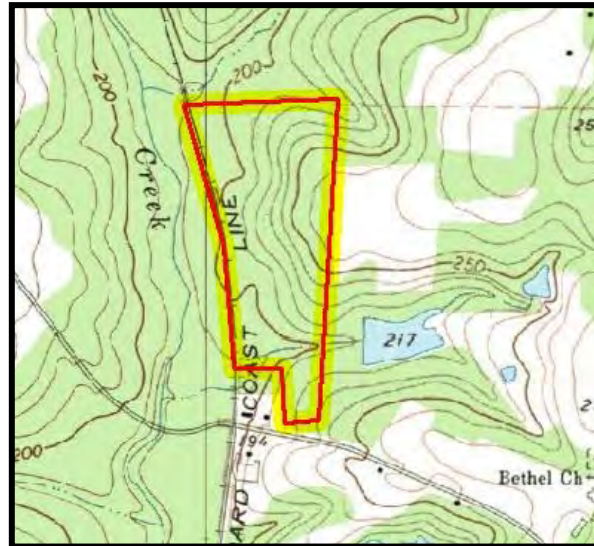


Details (MLS Data)



Topo Map (60 Acres, Millwhite Road)

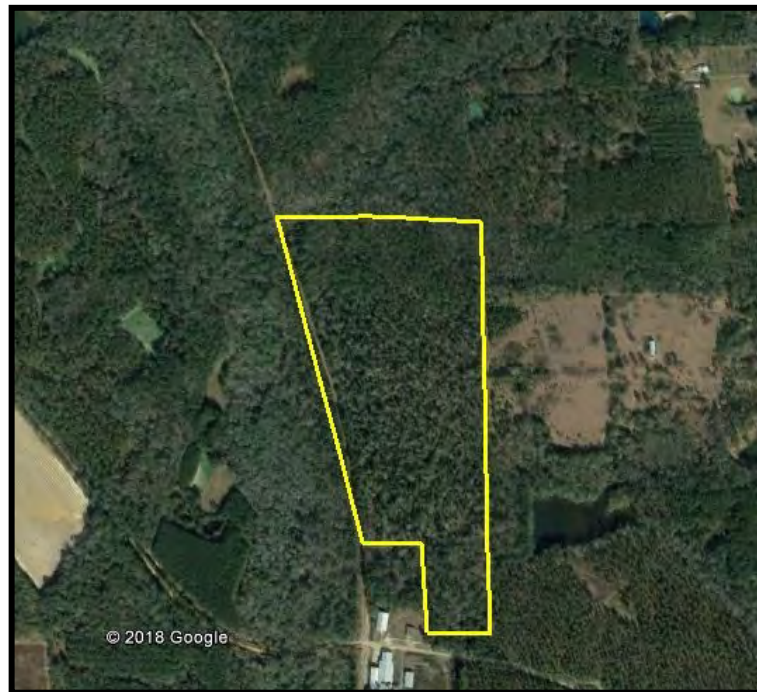
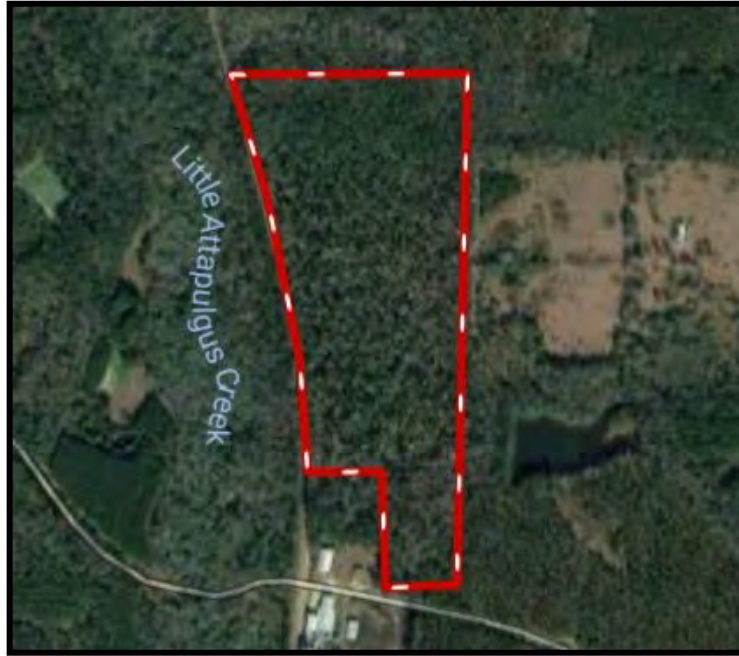

CROCKER
REALTY INC.
landcroc.com
229-228-0552



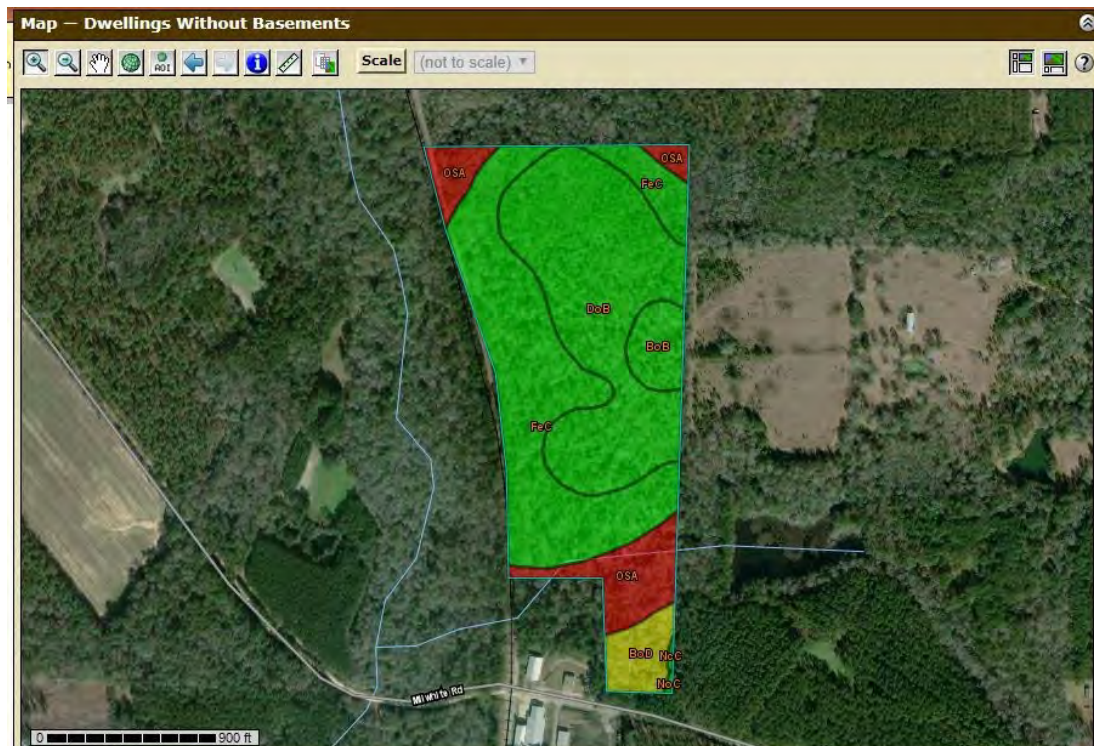
PROFILE RUNNING SOUTH TO NORTH

Aerial Map (60 Acres, Millwhite Road)


CROCKER
REALTY INC.
landcroc.com
229-228-0552



(60 Acres, Millwhite Rd.)



USDA Web Soil Survey Map. Green shaded area represents soils that are suitable for homesites.....subject to county approval.

Green = Not Limited
Yellow = Somewhat Limited
Red = Limited

Drone Photos (Millwhite Road)


CROCKER
REALTY INC.
landcroc.com
229-228-0552

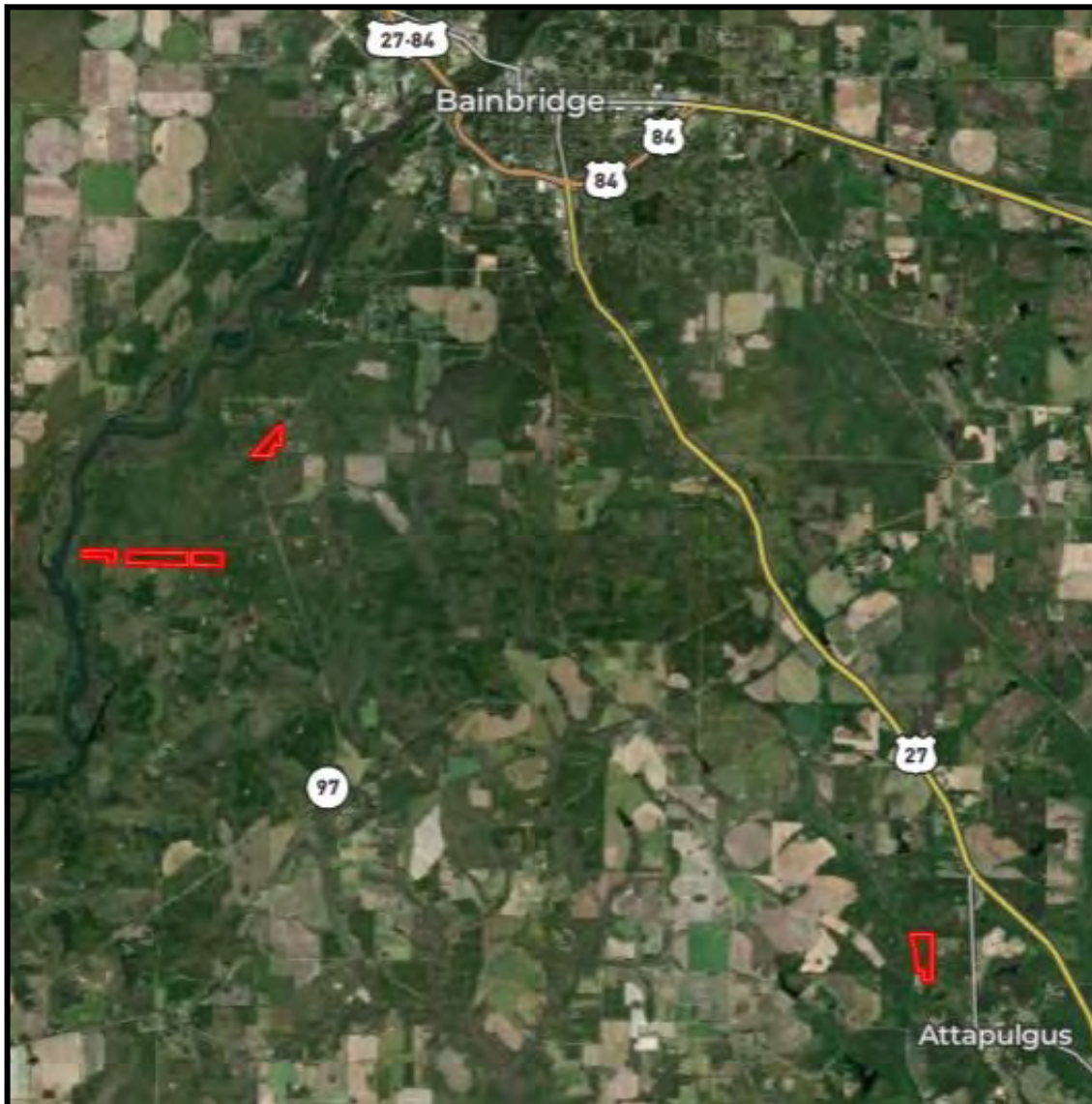


Top Photo Facing North up the Rail Road Line
Bottom Photo Facing North Further Up Rail Line.
(We closed on 110 Acres above this property on 1/15/2020)



Locator Map


CROCKER
REALTY INC.
landcroc.com
229-228-0552



88.6 +/- Acres, Old Southland Road, 6+/- Miles South of Bainbridge

60 +/- Acres, Millwhite Road, 11+/- Miles South of Bainbridge

28+/- Acres, Horseshoe Bend Road, 4+/- Miles South of Bainbridge

Locator Map



88.6 +/- Acres, Old Southland Road, 6+/- Miles South of Bainbridge

60 +/- Acres, Millwhite Road, 11+/- Miles South of Bainbridge

28+/- Acres, Horseshoe Bend Road, 4+/- Miles South of Bainbridge