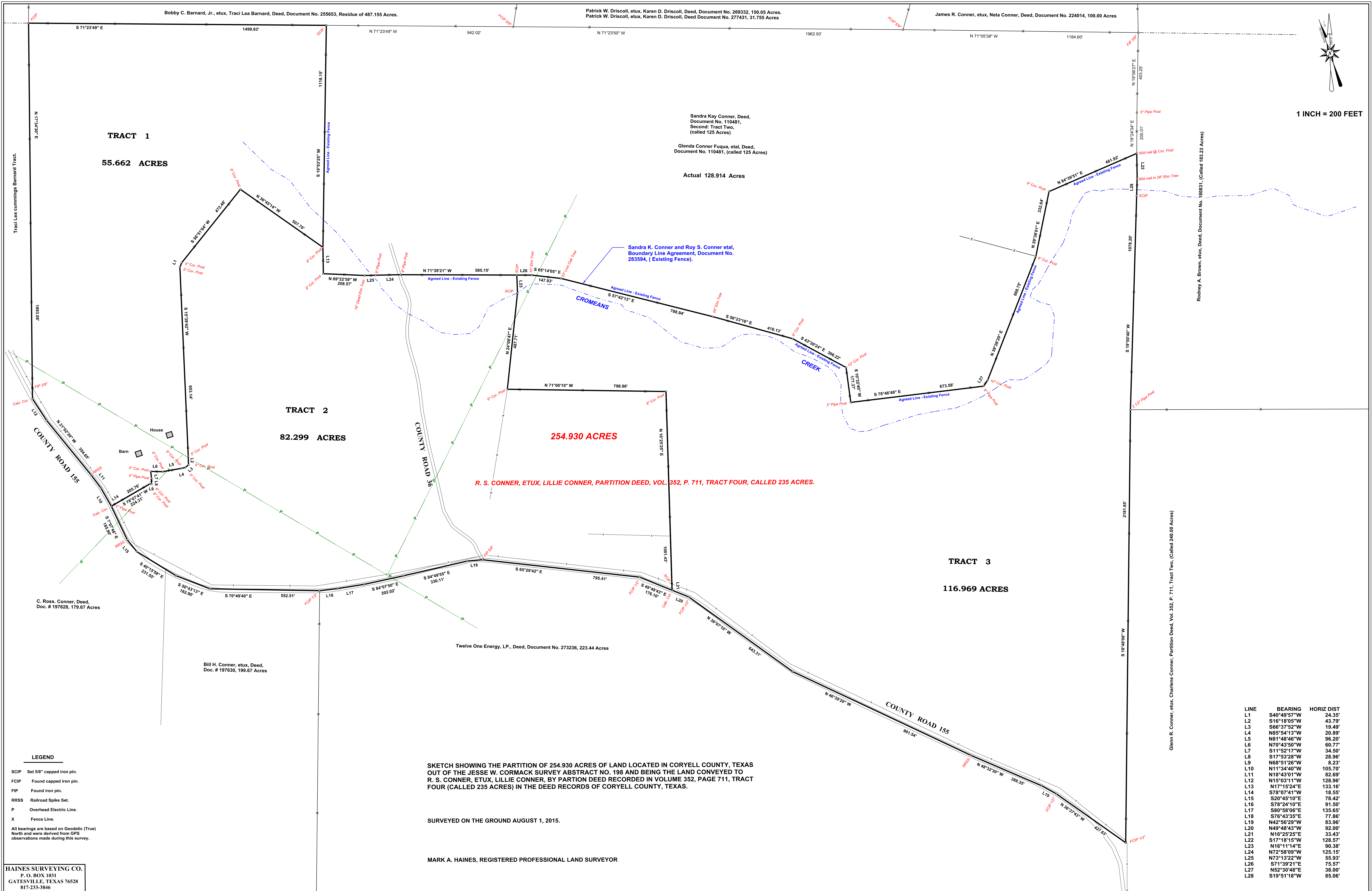


1 INCH = 200 FEET



TRACT 1
55.662 ACRES

TRACT 2
82.299 ACRES

254.930 ACRES

TRACT 3
116.969 ACRES

R. S. CONNER, ETUX, LILLIE CONNER, PARTITION DEED, VOL. 352, P. 711, TRACT FOUR, CALLED 235 ACRES.

Sandra Kay Conner, Deed, Document No. 110481, Second Tract Two, (called 125 Acres)
Glenda Conner Fuqua, etal, Deed, Document No. 110481, (called 125 Acres)
Actual 128.914 Acres

Sandra K. Conner and Roy S. Conner etal, Boundary Line Agreement, Document No. 283594, (Existing Fence).

SKETCH SHOWING THE PARTITION OF 254.930 ACRES OF LAND LOCATED IN CORYELL COUNTY, TEXAS OUT OF THE JESSE W. CORMACK SURVEY ABSTRACT NO. 198 AND BEING THE LAND CONVEYED TO R. S. CONNER, ETUX, LILLIE CONNER, BY PARTION DEED RECORDED IN VOLUME 352, PAGE 711, TRACT FOUR (CALLED 235 ACRES) IN THE DEED RECORDS OF CORYELL COUNTY, TEXAS.

SURVEYED ON THE GROUND AUGUST 1, 2015.

MARK A. HAINES, REGISTERED PROFESSIONAL LAND SURVEYOR

LINE	BEARING	HORIZ DIST
L1	S40°49'57"W	24.35'
L2	S16°18'05"W	43.79'
L3	S66°37'52"W	19.49'
L4	N85°54'13"W	20.89'
L5	N61°48'46"W	56.20'
L6	N70°43'50"W	60.77'
L7	S11°52'17"W	34.50'
L8	S17°53'28"W	28.96'
L9	N68°51'26"W	8.23'
L10	N11°54'40"W	105.70'
L11	N18°43'01"W	82.69'
L12	N15°03'11"W	128.96'
L13	N17°15'24"E	133.16'
L14	S78°07'41"W	18.55'
L15	S20°45'10"E	78.42'
L16	S78°24'10"E	91.50'
L17	S80°58'06"E	135.65'
L18	S76°43'35"E	77.86'
L19	N42°56'29"W	83.96'
L20	N49°48'43"W	92.00'
L21	N16°25'25"E	33.43'
L22	S17°18'15"W	128.57'
L23	N16°11'14"E	90.38'
L24	N72°58'09"W	125.15'
L25	N73°13'22"W	55.93'
L26	S71°39'21"E	75.57'
L27	N52°30'48"E	38.00'
L28	S19°51'18"W	85.06'

LEGEND

- SCIP Set 5/8" capped iron pin.
- FCIP Found capped iron pin.
- FIP Found iron pin.
- RRSS Railroad Spike Set.
- P Overhead Electric Line.
- X Fence Line.

All bearings are based on Geodetic (True) North and were derived from GPS observations made during this survey.

HAINES SURVEYING CO.
P. O. BOX 1031
GATESVILLE, TEXAS 76528
817-233-3846