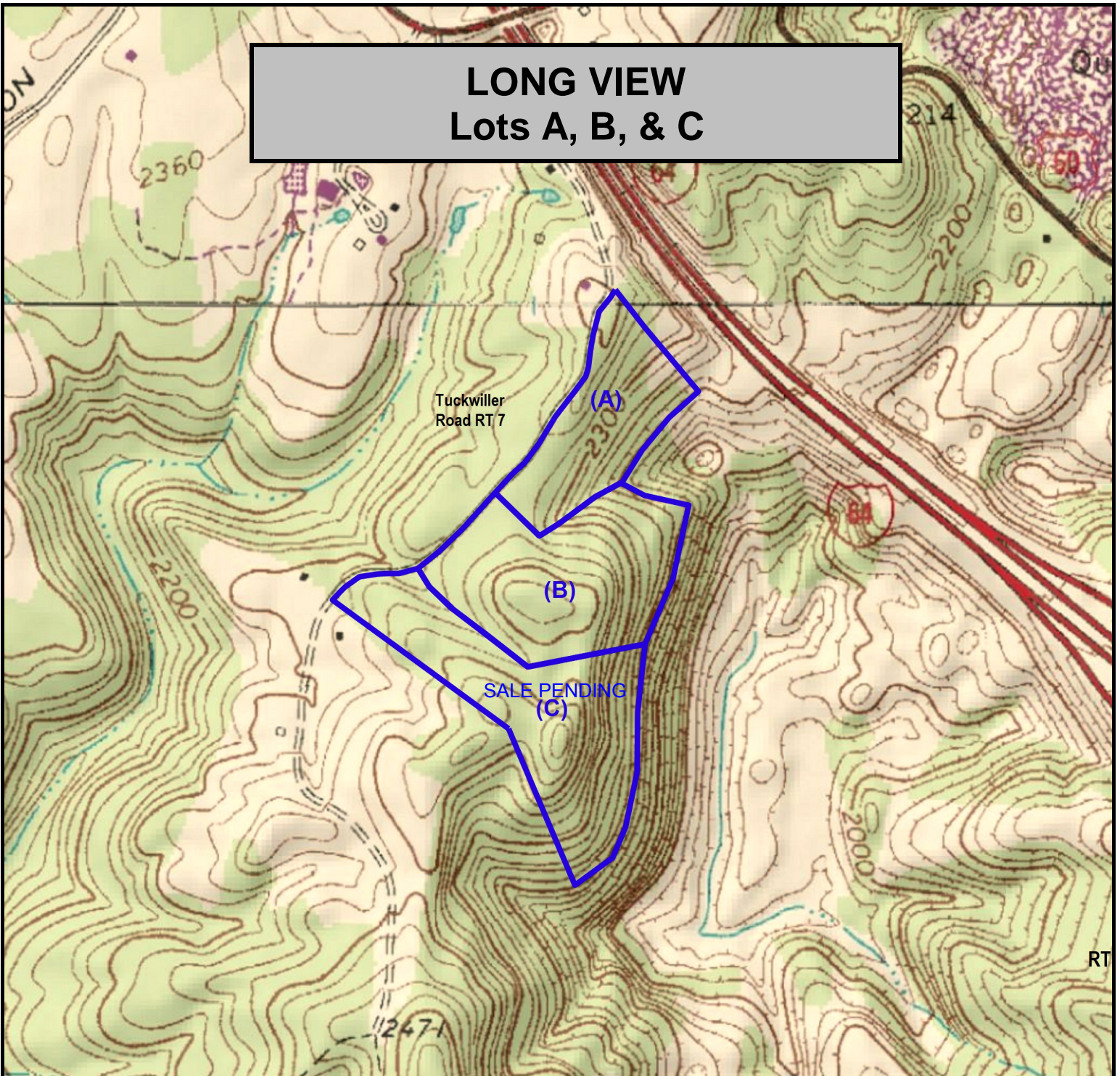


LONG VIEW Lots A, B, & C



Lots Summary
(A) = 17 AC +/- ; (B) = 24 AC +/- ; (C) = 26 AC +/-
Actual acreage of each lot to be determined by survey.

FOX FIRE
REALTY



LONG VIEW Lots A, B, & C, Greenbrier County, WV
(topographic map)
Elevation Range: 2200' - 2444' +/-; Google Coordinates:
LAT 37.875405 (N), LON -80.566203 (W)
This map is for general location purposes only. Consult a licensed
land surveyor for actual boundary location and acreage.

RICHARD GRIST, Broker - Auctioneer - Forester
304.646.8837 Richard@Foxfirenation.com
WWW.FOXFIRENATION.COM

FOR TOPO

SCALE 1:9600

1 INCH = 800 FT.

