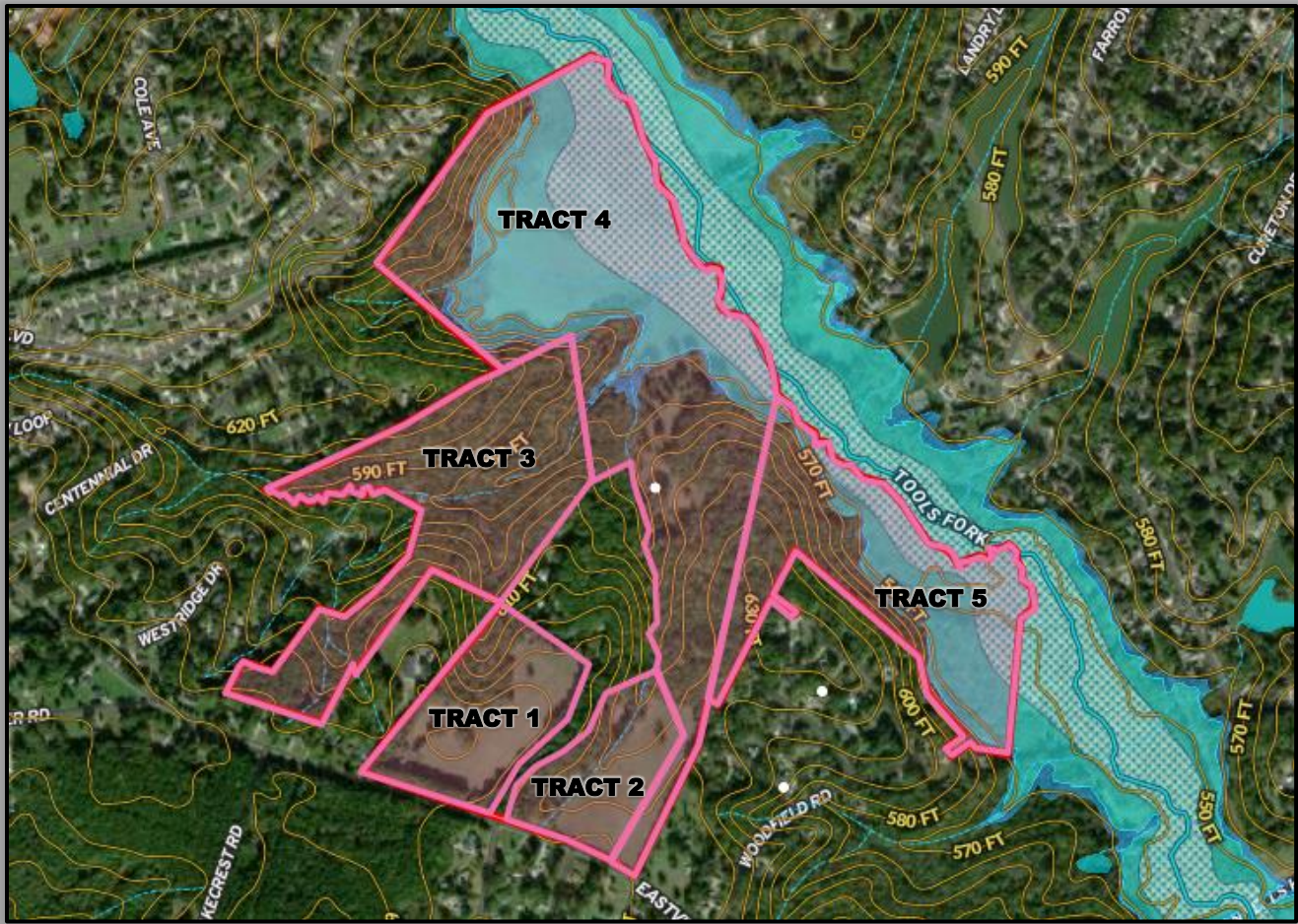




BROWN & Co.

REAL ESTATE



JL Love Estate – Proposed Sub-Division Options

Eastview Road, Rock Hill, SC

Tract 1	16.16± Acres	\$445,000	\$27,537 Per Acre
Tract 2	12± Acres	\$325,000	\$27,083 Per Acre
Tract 3	27.64± Acres	\$395,000	\$14,290 Per Acre
Tract 4	80± Acres	\$970,480	\$12,131 Per Acre
Tract 5	32.387± Acres	\$495,000	\$15,287 Per Acre
Total Combination	149.187± Acres	\$2,630,480	\$17,632 Per Acre

The final sales price for each individual tract shall be calculated on a price per acre basis determined by the gross acreage of a new survey paid for by the Buyers.

Each sub-divided portion shall be approved by the necessary local governing body prior to closing.