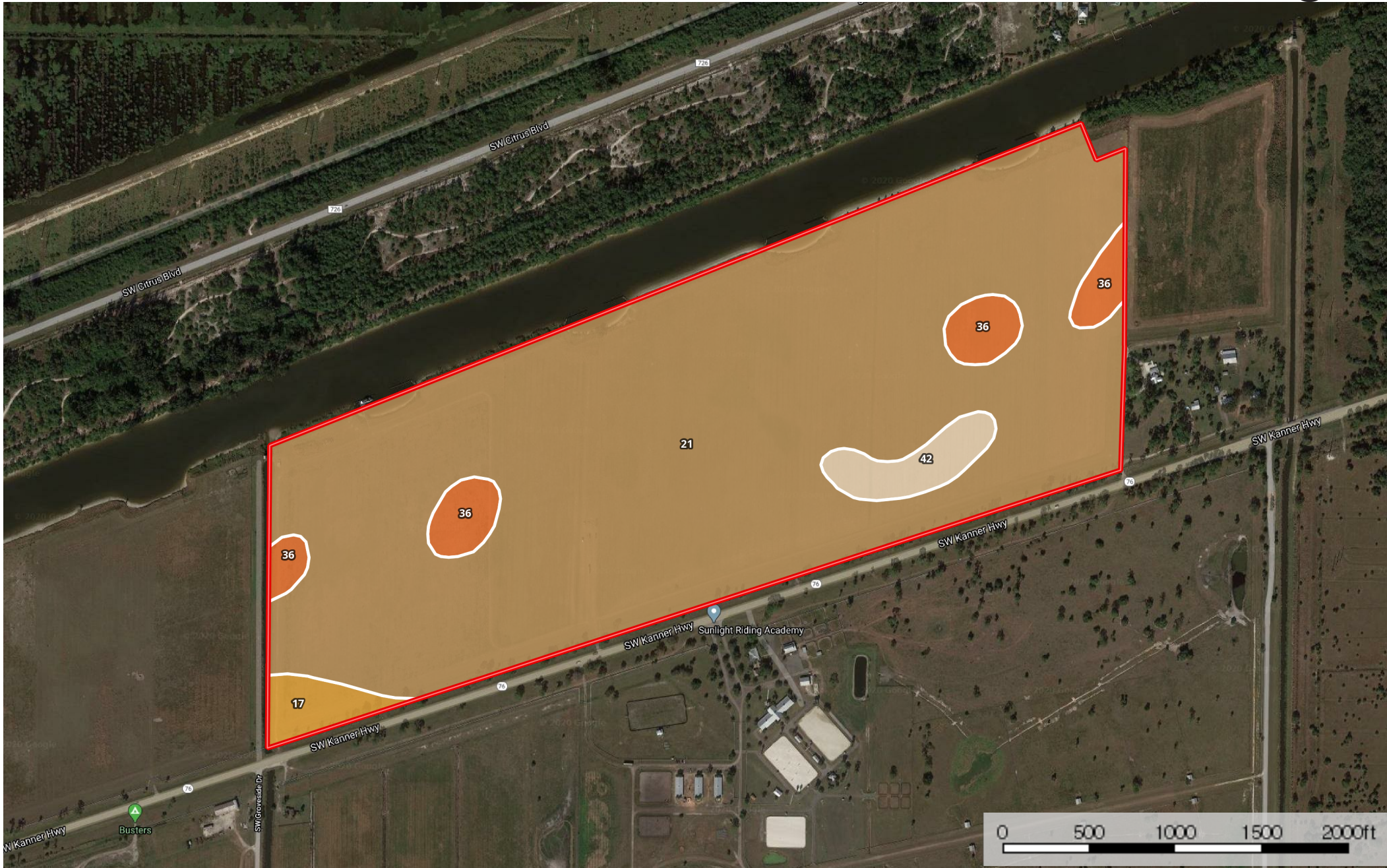



**Box Ranch of Martin County Water Front**  
Martin County, Florida, 172.32 AC +/-



 Boundary

|  Boundary 172.3 ac









SOIL CODE	SOIL DESCRIPTION	ACRES	%	CAP
21	Pineda-Riviera fine sands association, 0 to 2 percent slopes	155.9	90.45	3w
36	Arents, 0 to 2 percent slopes	8.4	4.89	8
42	Hallandale sand, 0 to 2 percent slopes	4.6	2.65	4w
17	Wabasso sand, 0 to 2 percent slopes	3.5	2.02	3w
TOTALS		172.3	100%	3.27

## Capability Legend

Increased Limitations and Hazards

Decreased Adaptability and Freedom of Choice Users

Land, Capability

								
	1	2	3	4	5	6	7	8
'Wild Life'	•	•	•	•	•	•	•	•
Forestry	•	•	•	•	•	•	•	
Limited	•	•	•	•	•	•	•	
Moderate	•	•	•	•	•	•		
Intense	•	•	•	•	•			
Limited	•	•	•	•				
Moderate	•	•	•					
Intense	•	•						
Very Intense	•							

## Grazing Cultivation

(c) climatic limitations (e) susceptibility to erosion

(s) soil limitations within the rooting zone (w) excess of water