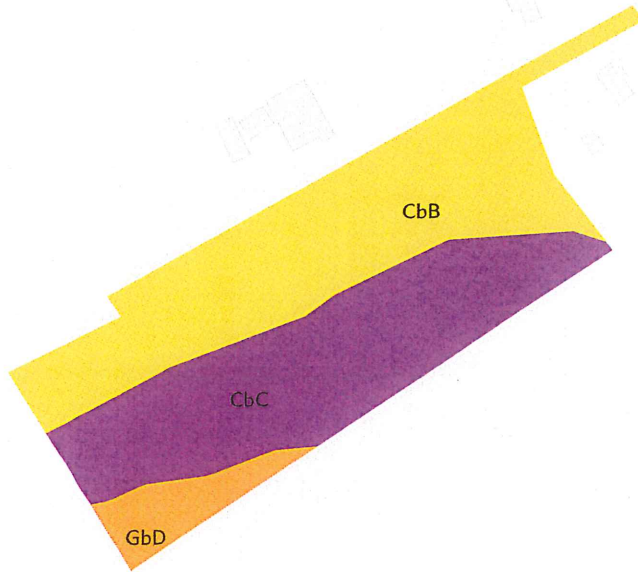


1 field, 9 acres in Lancaster County, PA

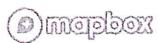
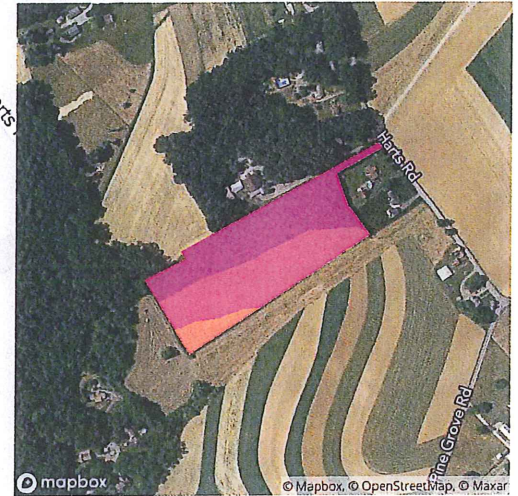


AVG NCCPI

61.3

COUNTY AVG

62.5






© Mapbox, © OpenStreetMap

QUALITY 43 82

Source: NRCS Soil Survey

All fields

9 ac

SOIL CODE	SOIL DESCRIPTION	ACRES	PERCENTAGE OF FIELD	SOIL CLASS	NCCPI
 CbB	Chester silt loam, 3 to 8 percent slopes	4.60	49.6%	2	63.5
 CbC	Chester silt loam, 8 to 15 percent slopes	4.03	43.4%	3	60.3
 GbD	Glenelg silt loam, 15 to 25 percent slopes	0.65	7.0%	4	52.6
					61.3