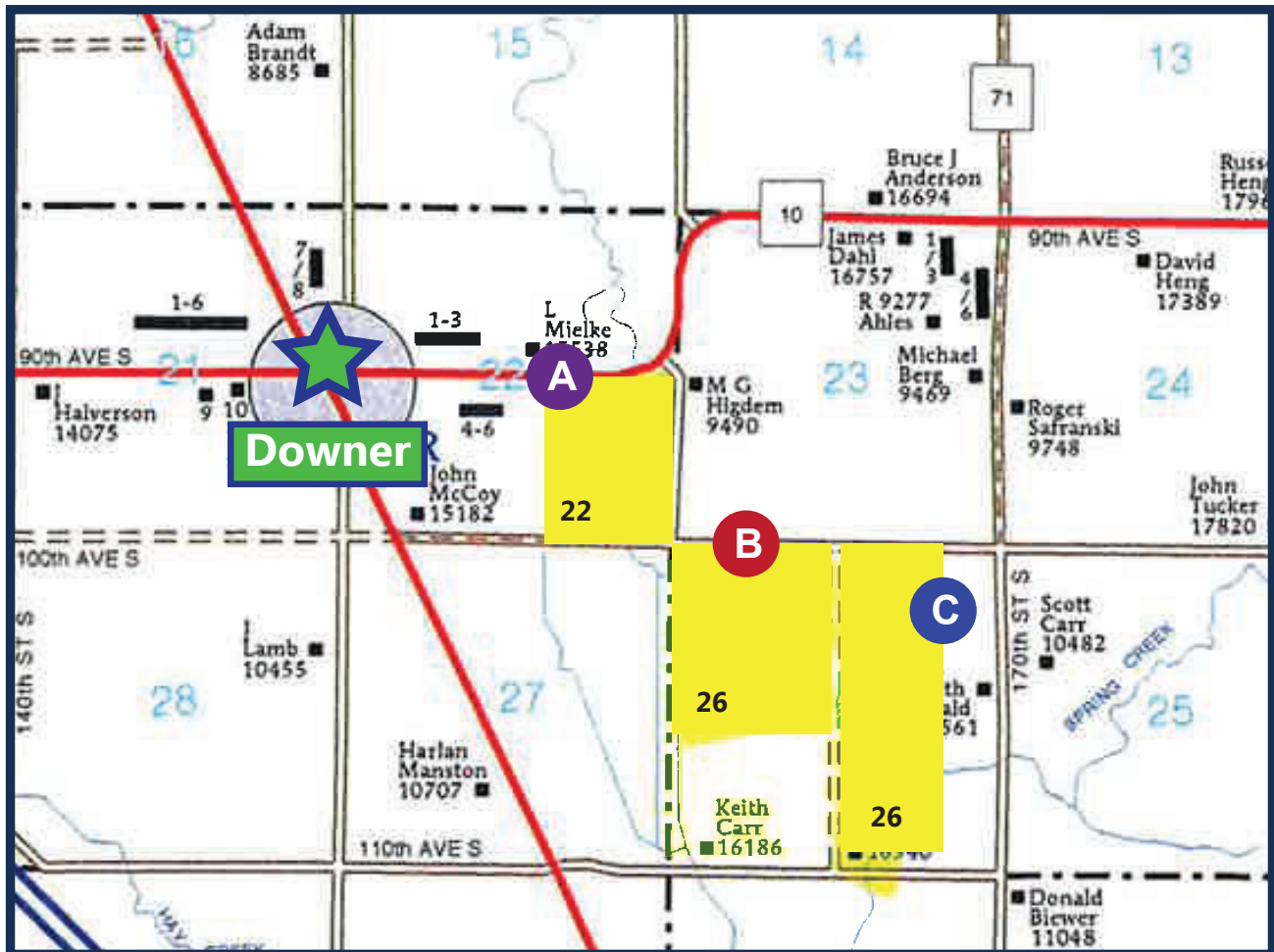




Clay County, ND
FARM LAND FOR SALE
455 +- Acres



Steve Johnson
701-799-5213

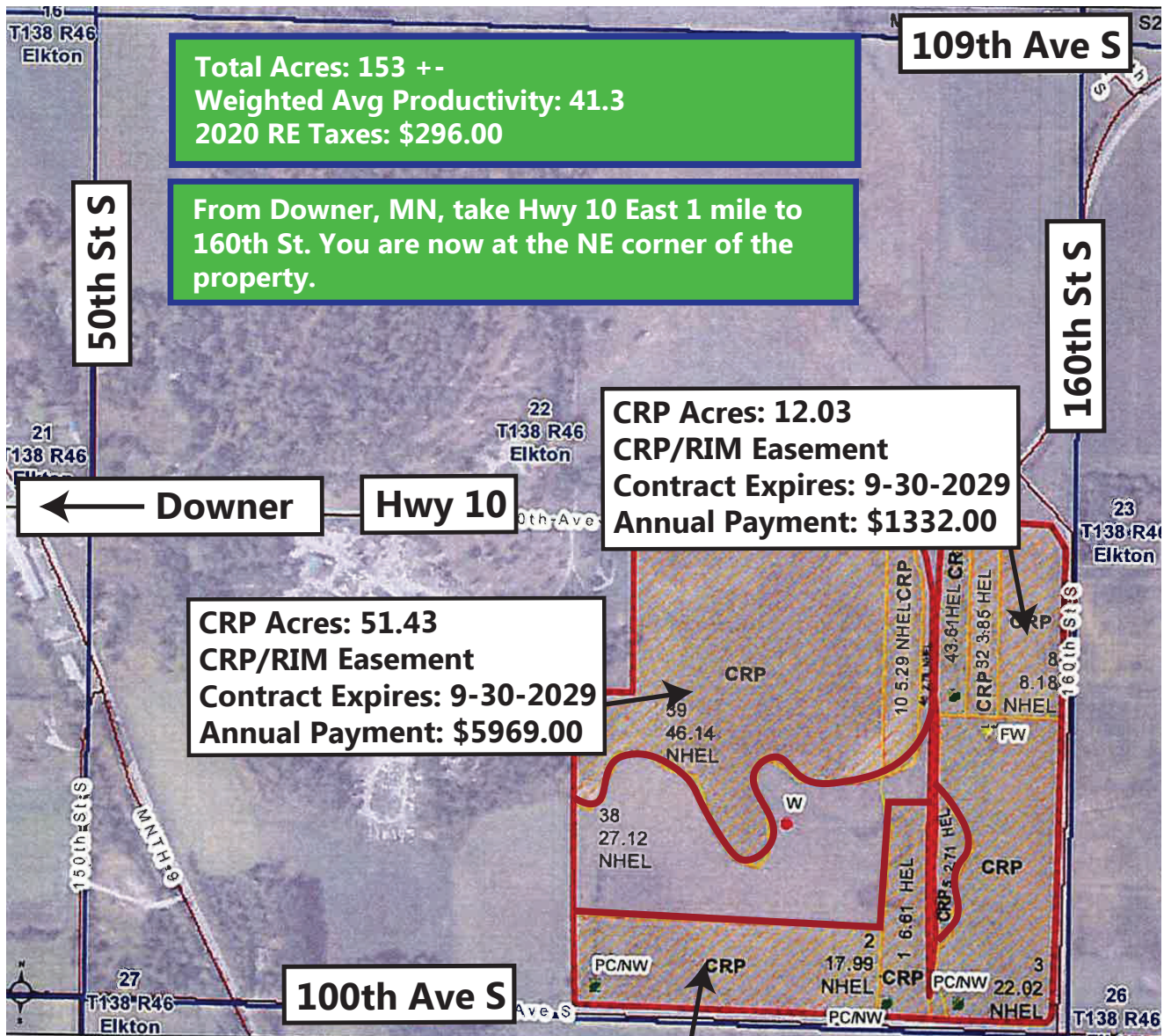


Clay County ND Farm Land For Sale

SE 1/4 Section 22-138-46

Approximately 153 Acres +-

A



*All information contained herein is believed to be true but should be verified to the buyer's satisfaction in case of error, typographical or otherwise. All information is subject to change without further notice.

Steve D. Johnson
Real Estate Broker
Auctioneer License #976
701-799-5213
steve@johnsonauctionandrealty.com



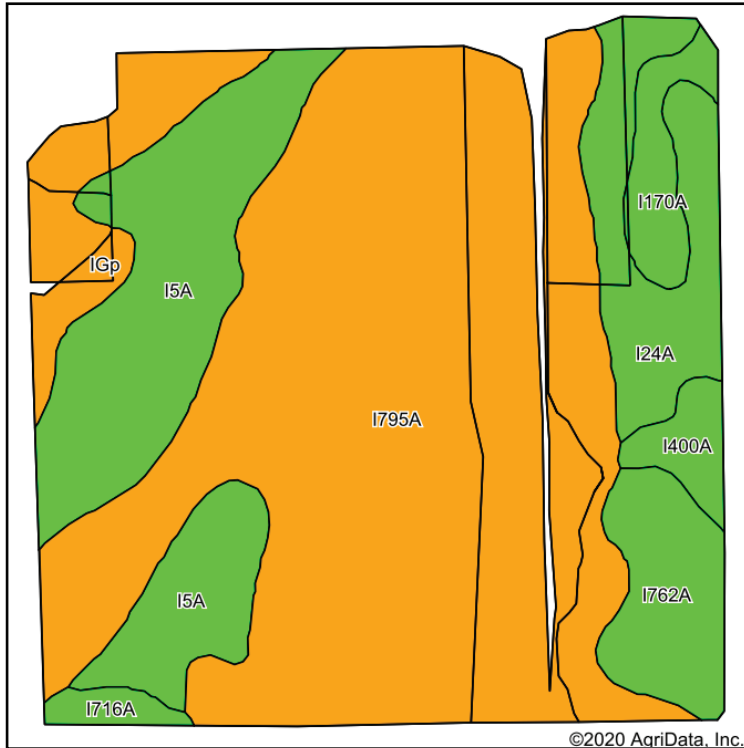
3137 32nd Ave S, Ste 211 | Fargo, ND 58103
www.johnsonauctionandrealty.com

Clay County ND Farm Land For Sale

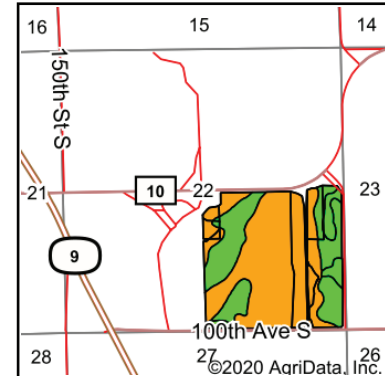
SE 1/4 Section 22-138-46

Approximately 153 Acres +-

A



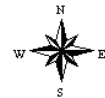
Soils data provided by USDA and NRCS.



State: **Minnesota**
 County: **Clay**
 Location: **22-138N-46W**
 Township: **Elkton**
 Acres: **150.16**
 Date: **7/13/2020**



Maps Provided By:



Area Symbol: MN027, Soil Area Version: 16

Code	Soil Description	Acres	Percent of field	PI Legend	NonIrr Class *c	Productivity Index	*n NCCPI Overall
I795A	Lamoure silt loam, 0 to 2 percent slopes, frequently flooded	86.62	57.7%		IIw	15	29
I5A	Borup loam, 0 to 1 percent slopes	26.85	17.9%		IIw	90	58
I24A	Grimstad fine sandy loam, 0 to 2 percent slopes, aspen parkland	11.60	7.7%		IIIs	88	54
IGp	Pits, gravel and sand	8.76	5.8%		VIIIs	0	
I762A	Vallers loam, lake plain, 0 to 1 percent slopes	8.10	5.4%		IIw	90	68
I170A	Swenoda loam, 0 to 3 percent slopes	4.03	2.7%		IIIe	95	63
I400A	Gilby loam, 0 to 2 percent slopes	2.73	1.8%		Ile	89	68
I716A	Arveson clay loam, 0 to 1 percent slopes	1.47	1.0%		IIIw	74	54
Weighted Average						41.3	*n 38.4

*n: The aggregation method is "Weighted Average using major components"

*c: Using Capabilities Class Dominant Condition Aggregation Method

Soils data provided by USDA and NRCS.



*All information contained herein is believed to be true but should be verified to the buyer's satisfaction in case of error, typographical or otherwise. All information is subject to change without further notice.

Steve D. Johnson

Real Estate Broker

Auctioneer License #976

701-799-5213

steve@johnsonauctionandrealty.com



3137 32nd Ave S, Ste 211 | Fargo, ND 58103

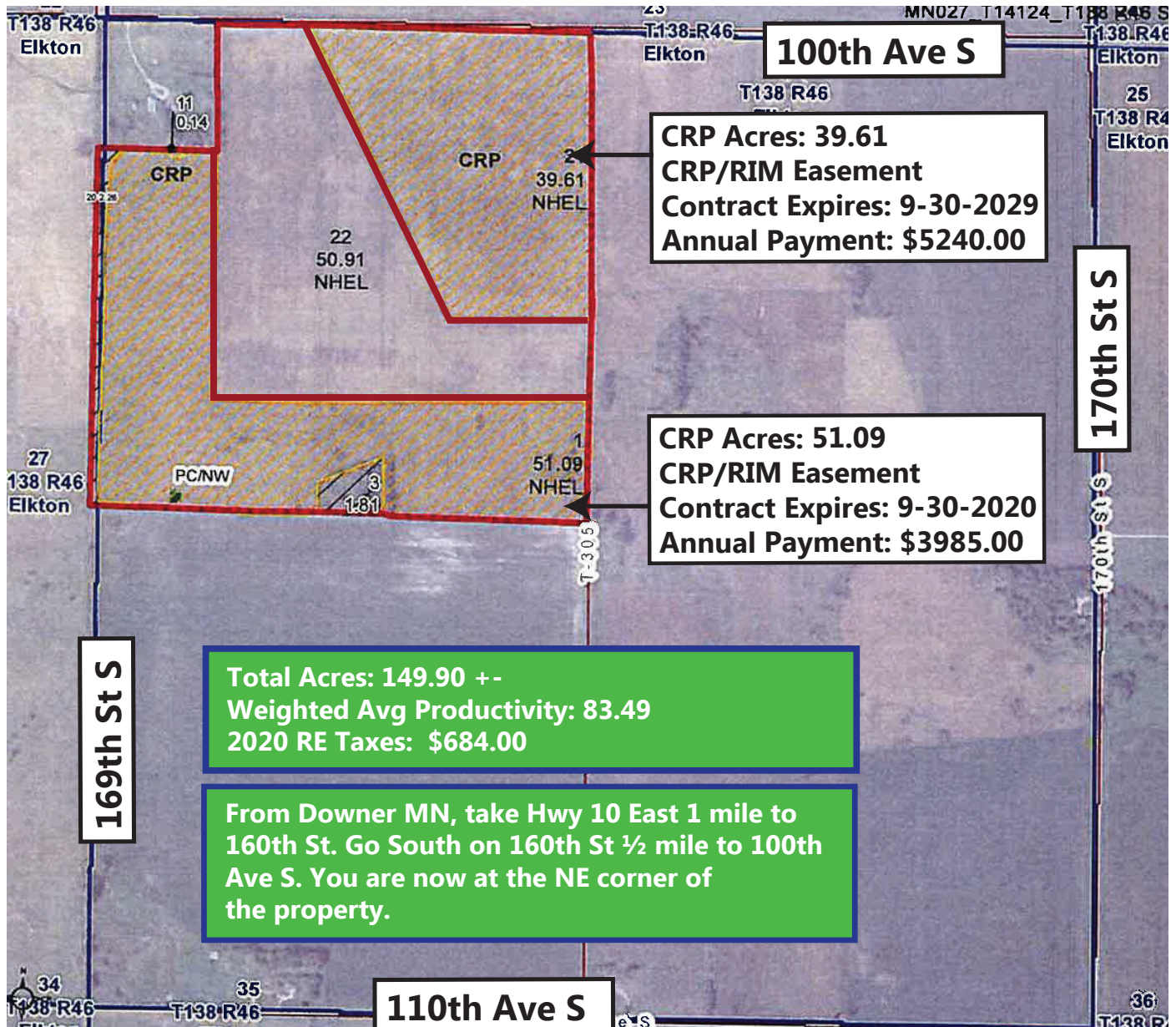
www.johnsonauctionandrealty.com

Clay County ND Farm Land For Sale

NW 1/4 Section 26-138-46

Approximately 149.90 Acres +-

B



*All information contained herein is believed to be true but should be verified to the buyer's satisfaction in case of error, typographical or otherwise. All information is subject to change without further notice.

Steve D. Johnson
 Real Estate Broker
 Auctioneer License #976
 701-799-5213
steve@johnsonauctionandrealty.com



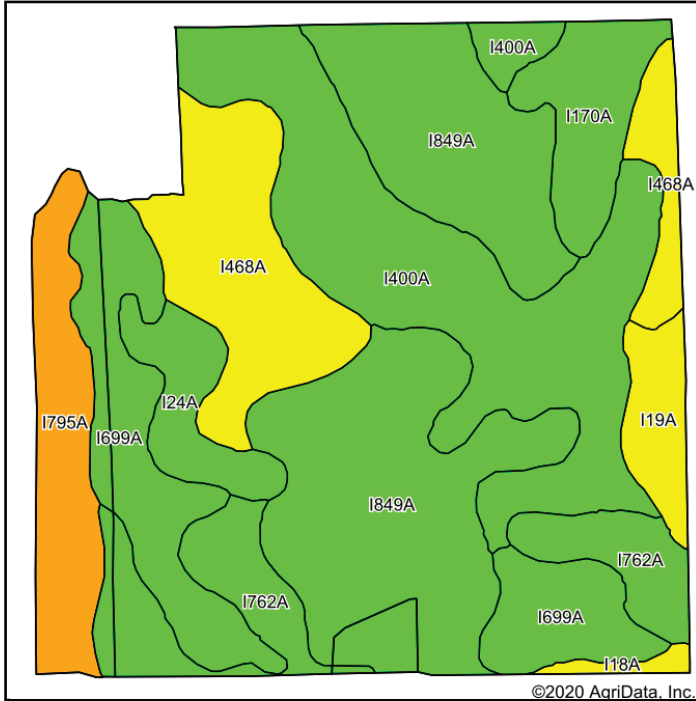
3137 32nd Ave S, Ste 211 | Fargo, ND 58103
www.johnsonauctionandrealty.com

Clay County ND Farm Land For Sale

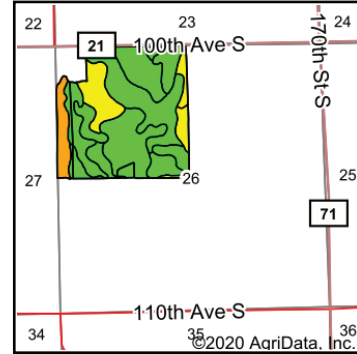
NW 1/4 Section 26-138-46

Approximately 149.90 Acres +-

B



Soils data provided by USDA and NRCS.



State: **Minnesota**
 County: **Clay**
 Location: **26-138N-46W**
 Township: **Elkton**
 Acres: **144.47**
 Date: **7/13/2020**



Maps Provided By:



Area Symbol: MN027, Soil Area Version: 16							
Code	Soil Description	Acres	Percent of field	PI Legend	NonIrr Class *c	Productivity Index	*n NCCPI Overall
I849A	Kittson fine sandy loam, wet, 0 to 2 percent slopes	39.17	27.1%		IIc	100	64
I400A	Gilby loam, 0 to 2 percent slopes	30.89	21.4%		IIe	89	68
I699A	Rockwell loam, 0 to 1 percent slopes	17.79	12.3%		IIw	87	62
I468A	Divide loam, 0 to 2 percent slopes	17.37	12.0%		IIIs	65	44
I762A	Vallers loam, lake plain, 0 to 1 percent slopes	12.29	8.5%		IIw	90	68
I795A	Lamoure silt loam, 0 to 2 percent slopes, frequently flooded	9.72	6.7%		IIw	15	29
I170A	Swenoda loam, 0 to 3 percent slopes	6.98	4.8%		IIIe	95	63
I24A	Grimstad fine sandy loam, 0 to 2 percent slopes, aspen parkland	5.31	3.7%		IIIs	88	54
I19A	Foxhome sandy loam, 0 to 2 percent slopes	4.14	2.9%		IIIe	65	51
I18A	Foldahl loamy fine sand, loamy till substratum, 0 to 3 percent slopes	0.81	0.6%		IIIs	65	43
Weighted Average						83.4	*n 59.3

*n: The aggregation method is "Weighted Average using major components"

*c: Using Capabilities Class Dominant Condition Aggregation Method
 Soils data provided by USDA and NRCS.



*All information contained herein is believed to be true but should be verified to the buyer's satisfaction in case of error, typographical or otherwise. All information is subject to change without further notice.

Steve D. Johnson
 Real Estate Broker
 Auctioneer License #976
 701-799-5213
 steve@johnsonauctionandrealty.com

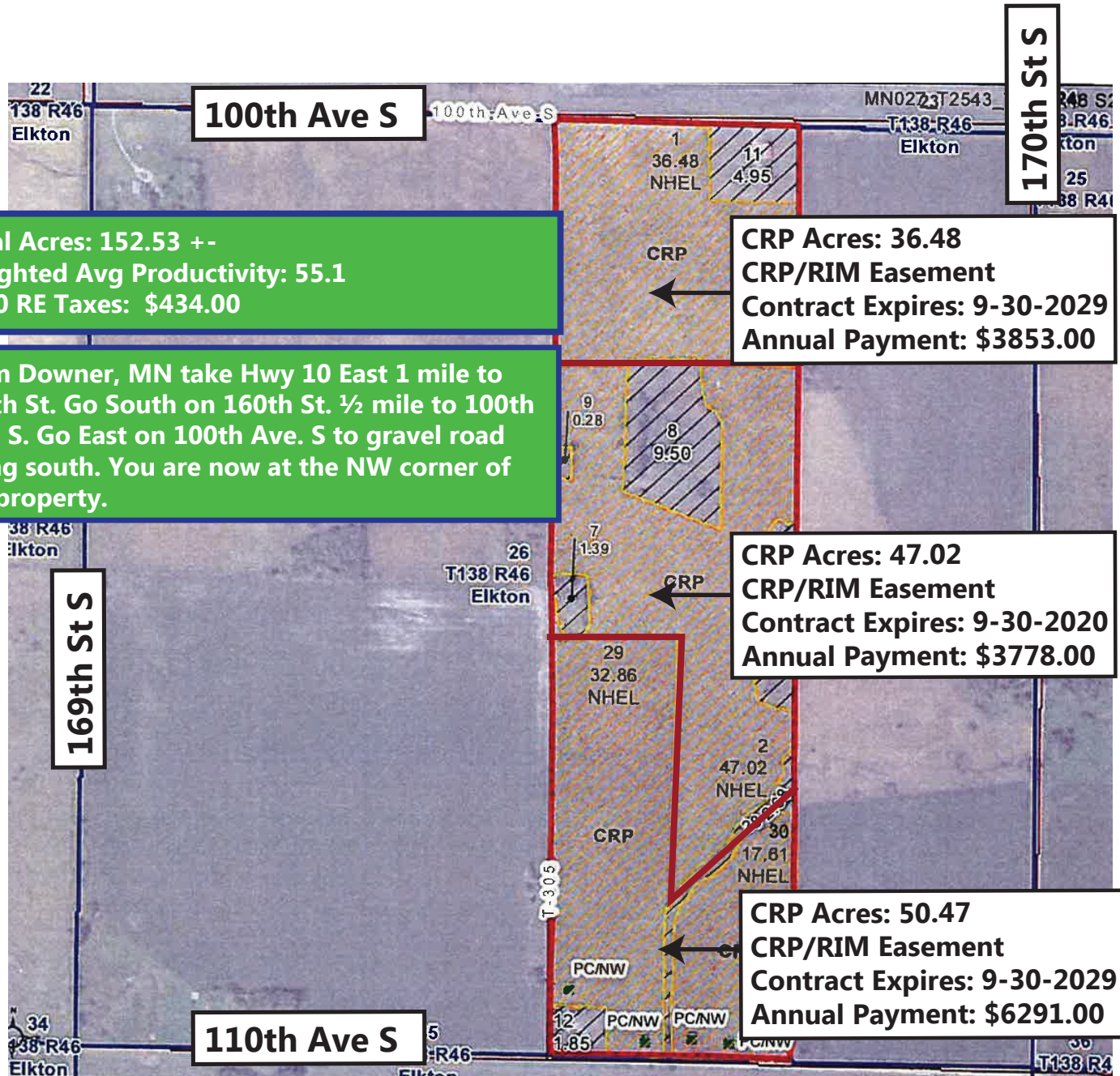


3137 32nd Ave S, Ste 211 | Fargo, ND 58103
 www.johnsonauctionandrealty.com

Clay County ND Farm Land For Sale

W 1/2 E 1/2 7.47 AC Section 26-138-46

Approximately 152.53 Acres +- C



*All information contained herein is believed to be true but should be verified to the buyer's satisfaction in case of error, typographical or otherwise. All information is subject to change without further notice.

Steve D. Johnson
Real Estate Broker
Auctioneer License #976
701-799-5213
steve@johnsonauctionandrealty.com



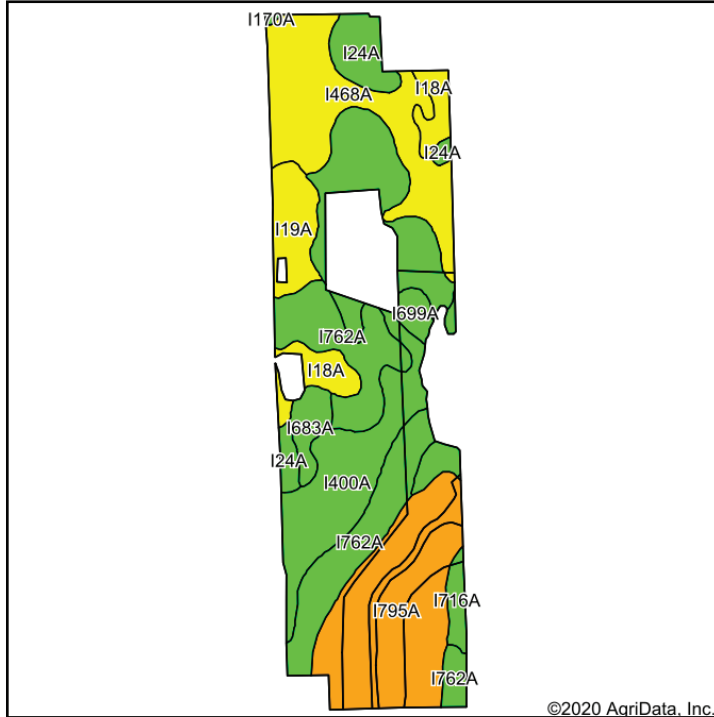
3137 32nd Ave S, Ste 211 | Fargo, ND 58103
www.johnsonauctionandrealty.com

Clay County ND Farm Land For Sale

W 1/2 E 1/2 7.47 AC Section 26-138-46

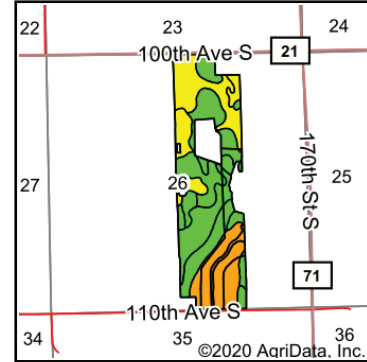
Approximately 152.53 Acres +-

C



©2020 AgriData, Inc.

Soils data provided by USDA and NRCS.



State: **Minnesota**
 County: **Clay**
 Location: **26-138N-46W**
 Township: **Elkton**
 Acres: **137.31**
 Date: **7/13/2020**



Maps Provided By:
surety
 CUSTOMIZED ONLINE MAPPING
 © AgriData, Inc. 2020 www.AgriDataInc.com



Area Symbol: MN027, Soil Area Version: 16							
Code	Soil Description	Acres	Percent of field	PI Legend	NonIrr Class *c	Productivity Index	*n NCCPI Overall
I400A	Gilby loam, 0 to 2 percent slopes	32.07	23.4%		Ile	89	68
I795A	Lamoure silt loam, 0 to 2 percent slopes, frequently flooded	28.86	21.0%		IIw	15	29
I762A	Vallers loam, lake plain, 0 to 1 percent slopes	24.86	18.1%		IIw	90	68
I468A	Divide loam, 0 to 2 percent slopes	22.56	16.4%		IIIs	65	44
I24A	Grimstad fine sandy loam, 0 to 2 percent slopes, aspen parkland	6.60	4.8%		IIIs	88	54
I19A	Foxhome sandy loam, 0 to 2 percent slopes	6.49	4.7%		IIIe	65	51
I18A	Foldahl loamy fine sand, loamy till substratum, 0 to 3 percent slopes	6.37	4.6%		IIIIs	65	43
I716A	Arveson clay loam, 0 to 1 percent slopes	3.89	2.8%		IIw	74	54
I683A	Flom clay loam, 0 to 1 percent slopes	3.30	2.4%		IIw	92	66
I699A	Rockwell loam, 0 to 1 percent slopes	2.18	1.6%		IIw	87	62
I170A	Swenoda loam, 0 to 3 percent slopes	0.13	0.1%		IIIe	95	63
Weighted Average						67	*n 52.7

*n: The aggregation method is "Weighted Average using major components"

*c: Using Capabilities Class Dominant Condition Aggregation Method

Soils data provided by USDA and NRCS.



*All information contained herein is believed to be true but should be verified to the buyer's satisfaction in case of error, typographical or otherwise. All information is subject to change without further notice.

Steve D. Johnson
 Real Estate Broker
 Auctioneer License #976
 701-799-5213
 steve@johnsonauctionandrealty.com



3137 32nd Ave S, Ste 211 | Fargo, ND 58103
 www.johnsonauctionandrealty.com

A**Section 22**

Total Acres: 153 +-
Weighted Avg Productivity: 41.3
2020 RE Taxes: \$296.00

B**Section 26**

Total Acres: 153 +-
Weighted Avg Productivity: 41.3
2020 RE Taxes: \$296.00

C**Section 26**

Total Acres: 149.90 +-
Weighted Avg Productivity: 83.49
2020 RE Taxes: \$684.00



Total Acres: 455 +-
Total Acres Enrolled in CRP: 341.07
Total CRP Income: \$34609.00
Total 2020 RE Taxes: \$1414.00



*All information contained herein is believed to be true but should be verified to the buyer's satisfaction in case of error, typographical or otherwise. All information is subject to change without further notice.

Steve D. Johnson

Real Estate Broker
Auctioneer License #976
701-799-5213
steve@johnsonauctionandrealty.com

3137 32nd Ave S, Ste 211 | Fargo, ND 58103
www.johnsonauctionandrealty.com



701-799-5213
steve@johnsonauctionandrealty.com

3137 32nd Ave S, Ste 211 | Fargo, ND 58103
www.johnsonauctionandrealty.com

