



**T R O P H Y**  
PROPERTIES AND AUCTION  
LAND | RECREATIONAL | RESIDENTIAL

# 33.32 +/- Beautiful Gated Entry Home/ Recreational/Hunting Estate for Sale

www.TrophyPA.com • (855) 573-5263 • leads@trophyapa.com



## PROPERTY ADDRESS:

3400 Dutch Bottom Rd.  
Arnold, MO 63010

**PRICE:** \$1,495,000

**ACRES:** 33.32

**COUNTY:** Jefferson

## PROPERTY HIGHLIGHTS:

- 5,000 sq. ft. all brick home
- 5 bed/4 baths
- 33.32 +/- acres
- Electric gated fence
- Food plots
- No restrictions
- Unincorporated
- Excellent deer and turkey hunting
- Live creek runs through property

## PROPERTY DESCRIPTION:

33.32 ac. gated entry home/recreational/hunting estate nestled on the outskirts of Arnold, MO. 5,000 SF living space, 5 bd/4 ba, IMMACULATE all brick home. Spacious kitchen, great rm, hardwood floors. Complete In-Law quarters LL. 3 car garage. 3/4 wrap-around cedar deck. No expense spared in building this home. Spring branch & live-creek cut through the immaculately manicured bottom ground. Electric gate at entrance. Engineered drawn/permitted bridge over the creek. 10 ac of this tract could potentially be developed into 1-ac building lots if desired. Sewer, County water, & gas all onsite. Numerous Pope & Young deer have been taken on this property. Arnold, MO mailing not in city limits. NO RESTRICTIONS. Tract has wooded neighbors on 3 sides & approx. 1,600' of Dutch Bottom Rd. frontage. Truly a HIGH-END home on one of the best recreational/hunting spots in No. Jefferson Co. 6 min from Arnold, 10 min from Fenton, 15 min from Sunset Hills, & 22 min to downtown STL.



**PRESENTED BY:**

**DAVID CONWAY**

**Land Specialist—MO**

M: (314) 910-9634

P: (855) 573-5263 x747

E: dconway@trophyapa.com

**Trophy Properties and Auction**

15480 Clayton Road

Suite 101

Ballwin, MO 63011

www.Trophyapa.com

leads@trophyapa.com

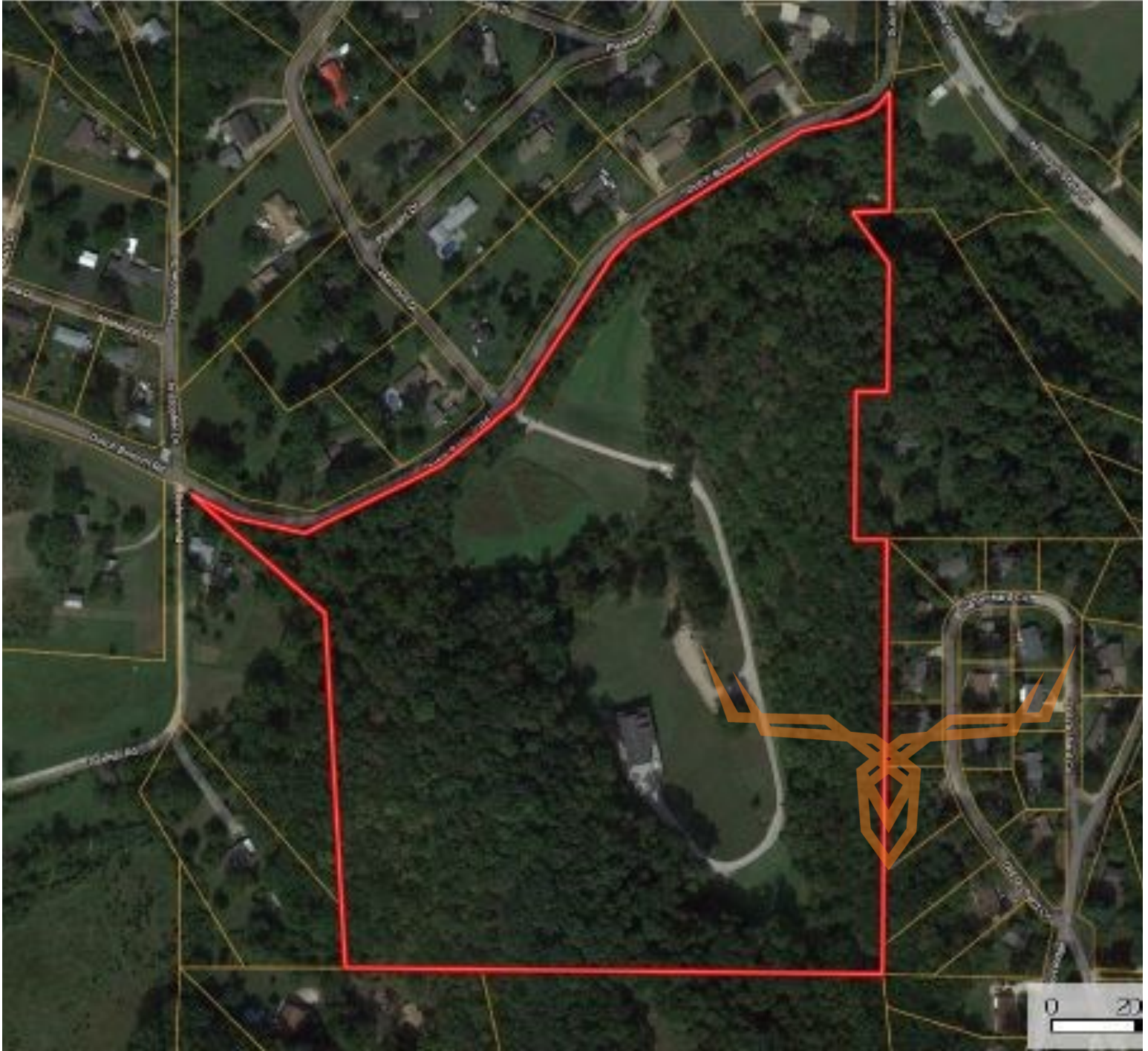




**T R O P H Y**  
PROPERTIES AND AUCTION  
LAND | RECREATIONAL | RESIDENTIAL

## 33.32 +/- Beautiful Gated Entry Home/ Recreational/Hunting Estate for Sale

[www.TrophyPA.com](http://www.TrophyPA.com) • (855) 573-5263 • [leads@trophyPA.com](mailto:leads@trophyPA.com)



Broker does not guarantee the accuracy of sq. ft., lot size, or other information, buyer is advised to independently verify the accuracy of information through personal inspection and with appropriate professionals