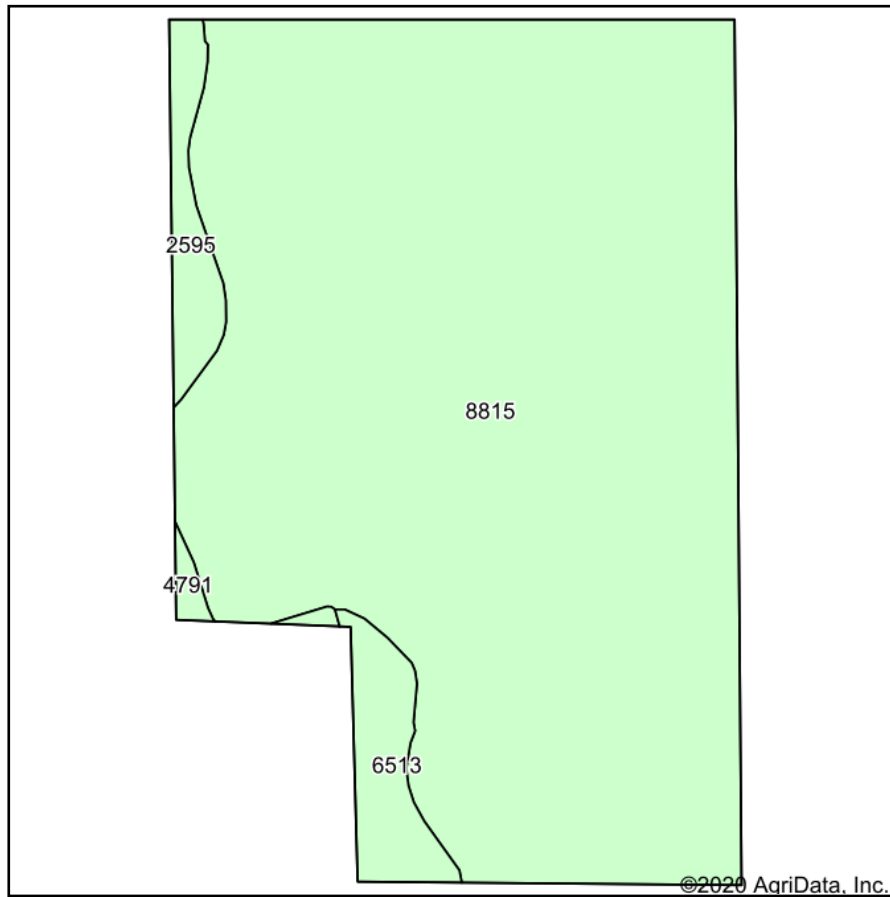
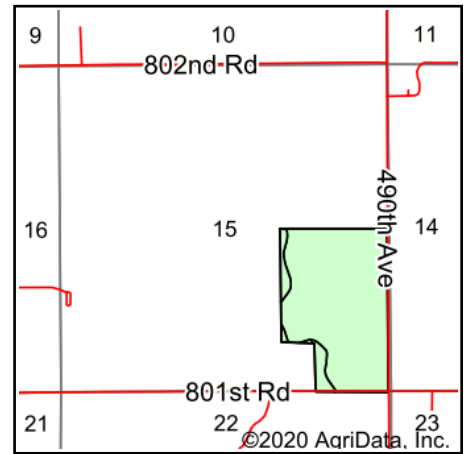


Soils Map



Soils data provided by USDA and NRCS.



State: **Nebraska**
 County: **Greeley**
 Location: **15-17N-12W**
 Township: **Scotia**
 Acres: **93.62**
 Date: **8/5/2020**



Area Symbol: NE077, Soil Area Version: 18

Cod e	Soil Description	Acres	Percent of field	Non-Irr Class *c	Irr Class *c	SRP G	Alfalfa hay	Alfalfa hay Irrigated	Corn	Corn Irrigated	Grain sorghum	Grain sorghum Irrigated	Winter wheat	*n NCCPI Soybeans
8815	Cozad silt loam, 0 to 1 percent slopes	86.77	92.7%	IIc	I	70								70
6513	Blendon loam, 0 to 2 percent slopes	3.55	3.8%	IIc	I	69	3	6	56	150	64	128	42	58
2595	Hersh fine sandy loam, 0 to 3 percent slopes	2.73	2.9%	IIIe	IIIe	57		1	4	17	5	11		47
4791	Valentine fine sand, 3 to 9 percent slopes	0.57	0.6%	VIe	IVe	23	1	2	20	91	25	84	12	21
Weighted Average						69.3	0.1	0.3	2.4	6.7	2.7	5.7	1.7	*n 68.6

*n: The aggregation method is "Weighted Average using all components"

*c: Using Capabilities Class Dominant Condition Aggregation Method

Soils data provided by USDA and NRCS.