

La Porte County
Noble Township

Co-Brokerage
Welcomed

FOR SALE



Sale
or
Lease



COUNTRY LIVING

3606 W. 800 S. | Union Mills

Well maintained dairy facilities with 2006 double ten parlor, 168 stall free stall barn, heifer barn with 96 free stalls, calf barn, bunker silo, poured concrete 24' x 96' silo, 2 stave silos, storage buildings, 348 total free stall capacity.

INCLUDING: 2,841 sq. ft. 1.5 story 1895 remodeled farmhouse with 4 bed + 2 bath and attached garage.

**12.74^{+/-}
acres**

**2 PROPERTY
LOCATIONS**



OWNER: Lindborg Dairy, LLC



Larry Smith
La Porte, IN
219.716.4041
larrys@halderman.com



Kelsey Sampson
La Porte, IN
219.608.4341
ksampson@halderman.com



HALDERMAN
REAL ESTATE & FARM MANAGEMENT

FOR SALE

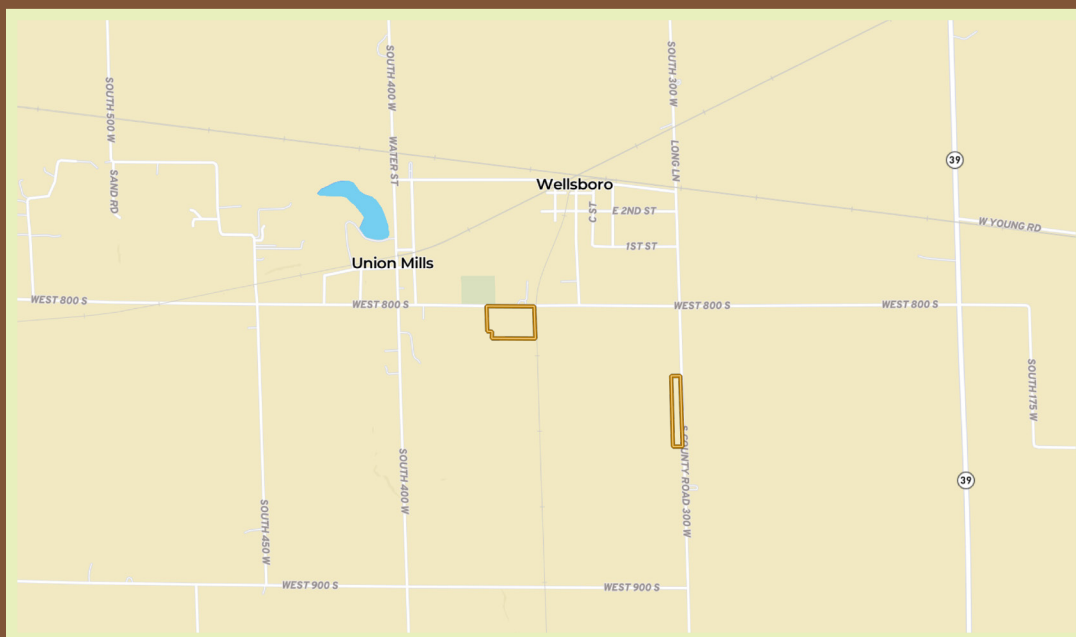
Property Showings by Appointment

5.7^{+/-} acres / **2,496 sq. ft.**

8256 S. 300 W. | Union Mills

2.5 story single family home with 3 bedrooms upstairs (carpeted) and 1 bath. 1 additional bath on main floor; 15 x 15 kitchen; Utility room; Central air. 2 barns, 3 sheds and a poultry house.

INCLUDING: 2.9 +/- acres fenced pasture. 364 sq. ft. Detached Garage with metal roof. 70' x 50' Cattle Barn with 72 free stalls and metal roof. 24' x 55' Barn with metal roof. Utility Shed with metal roof. 70' x 40' Open Front Cattle Barn with metal roof.



LOCATION

15 miles NW of Valparaiso
9 miles SW of La Porte

ZONING

Agricultural

TOPOGRAPHY

Level

SCHOOL DISTRICT

South Central Schools