



FARM & RANCH

242 ACRES W/HOME
ALSO AVAILABLE W/142 ACRES

2239 FINIS RD. – GRAHAM, TX



STEPHEN
REICH GROUP
WILLIAMS TREW REAL ESTATE

Williamstrew 
A DIVISION OF EBBY HALLIDAY REAL ESTATE, INC.

LISTED BY **STEPHEN REICH GROUP** OF WILLIAMS TREW REAL ESTATE

PROPERTY SUMMARY

DESCRIPTION

242 picturesque acres just minutes from Graham, TX, with a fabulous home, in ground pool, and so much more. This spacious custom homes features open concept with 2 large family rooms, 4 bedrooms, and 2.5 bathrooms. In-ground diving pool with water slide and a yard with mature hardwood trees make the exterior of this home perfect for relaxation. Detached 3 car garage also has room to be a perfect workshop and you will also find 2 barns and outdoor arena. The property is breathtaking with 100 feet of elevation change, 3 large stock tanks, seasonal creek and 15 acres of coastal Bermuda grass. Water is provided by a water coop with a tap on both roads. There is also a water well for landscape irrigation purposes

LOCATION

CITY	GRAHAM
County	YOUNG
Road Frontage	FM ROAD
Topography	VARIED
Sale Type	RES - F&R

OFFER SUMMARY

List Price	\$1,495,000
Lot Size	242 ACRES
Utilities	SEPTIC, WELL, CO-OP
MISC.	FENCED FOR HORSES

HIGHLIGHTS

- 2,187 SF 4/2.5 HOME
- 3 LARGE STOCK TANKS
- DIVING POOL W/SLIDE
- SEASONAL CREEK
- DETACHED 3 CAR GARAGE
- 2 BARNs / OUTDOOR ARENA

LISTING PRESENTED BY:



STEPHEN REICH
817-597-8884
stephen.reich@williamstrew.com



DENNY RALLS
817-965-3464
denny.ralls@williamstrew.com



PARKER COUNTY OFFICE

405 S. FM 1187, STE. 400
ALED0, TX 760089

FARM & RANCH • RESIDENTIAL • COMMERCIAL-DEVELOPMENT • LAND

PROPERTY PHOTOS

SOME PHOTOS ARE VIRTUALLY STAGED



STEPHEN REICH – 817.597.8884
DENNY RALLS – 817.965.3464



WilliamsTrew 
A DIVISION OF EBBY HALLIDAY REAL ESTATE, INC.

PROPERTY PHOTOS

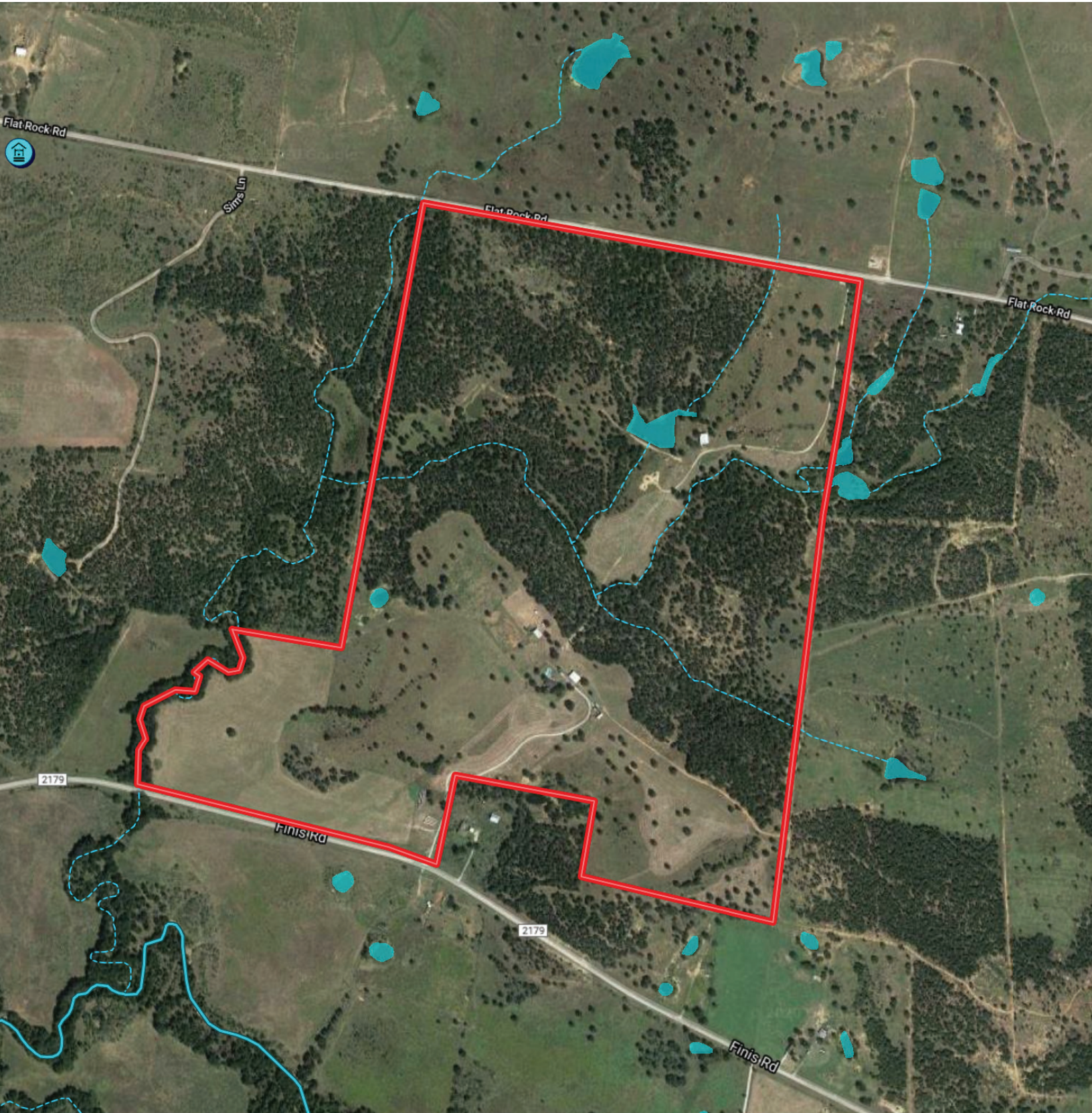


STEPHEN REICH – 817.597.8884
DENNY RALLS – 817.965.3464



WilliamsTrew 
A DIVISION OF EBBY HALLIDAY REAL ESTATE, INC.

AERIAL MAP
WILL SUBDIVIDE



STEPHEN REICH – 817.597.8884
DENNY RALLS – 817.965.3464



WilliamsTrew 
A DIVISION OF EBBY HALLIDAY REAL ESTATE, INC.