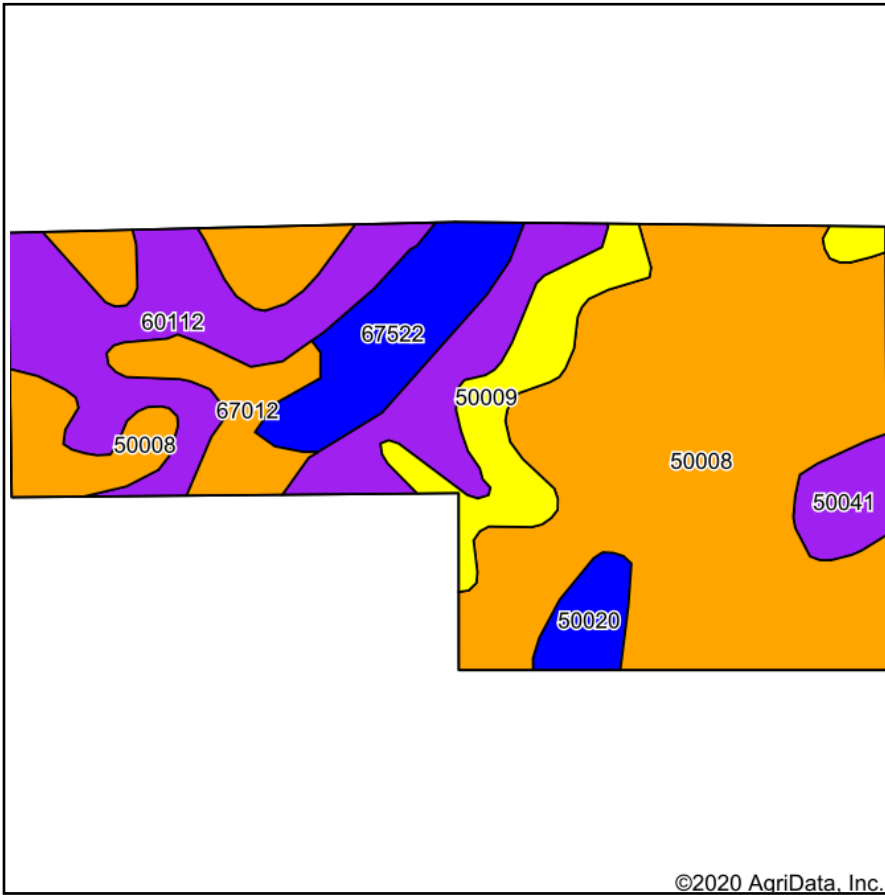
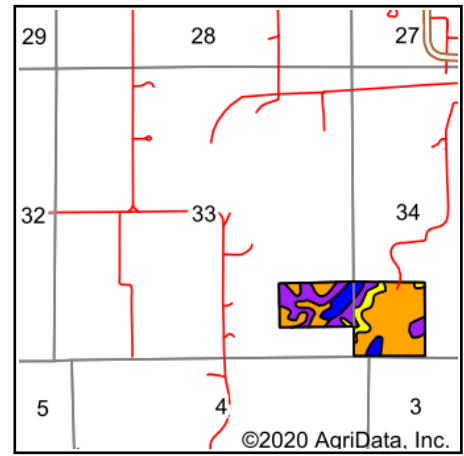


# Soils Map



Soils data provided by USDA and NRCS.



State: **Missouri**  
 County: **Warren**  
 Location: **33-49N-3W**  
 Township: **Camp Branch**  
 Acres: **66.44**  
 Date: **8/19/2020**



Maps Provided By:



© AgriData, Inc. 2020

www.AgriDataInc.com



Area Symbol: MO219, Soil Area Version: 20											
Code	Soil Description	Acres	Percent of field	Non-Irr Class Legend	Non-Irr Class *c	Alfalfa hay	Caucasian bluestem	Common bermudagrass	Orchardgrass red clover	Tall fescue	Warm season grasses
50008	Keswick silt loam, 5 to 9 percent slopes, eroded	34.71	52.2%		IIIe						
60112	Goss very gravelly silt loam, 14 to 45 percent slopes	14.39	21.7%		VIIe						
67522	Cedargap silt loam, 0 to 2 percent slopes, frequently flooded, cool	5.25	7.9%		IIIs	2	4	3	1	3	4
50009	Keswick silt loam, 9 to 14 percent slopes, eroded	5.19	7.8%		IVe						
67012	Cedargap silt loam, 1 to 3 percent slopes, frequently flooded, cool	3.24	4.9%		IIIw	2	4	3	1	3	4
50041	Lindley loam, 14 to 40 percent slopes	1.92	2.9%		VIe						
50020	Calwoods silt loam, 2 to 5 percent slopes	1.74	2.6%		Ile	5	8	7	8	7	8
Weighted Average						0.4	0.7	0.6	0.3	0.6	0.7

\*c: Using Capabilities Class Dominant Condition Aggregation Method

Soils data provided by USDA and NRCS.