



Warren County Missouri Paradise - Close to Innsbrook Resort

T R O P H Y
PROPERTIES AND AUCTION
LAND | RECREATIONAL | RESIDENTIAL

www.TrophyPA.com • (855) 573-5263 • leads@trophy.com



PROPERTY ADDRESS:

00 Hwy F
Wright City, MO 63390

PRICE: \$742,000

ACRES: 62

COUNTY: Warren

PROPERTY HIGHLIGHTS:

- Bordering city limits of Wright City, MO
- Minutes from Innsbrook Resort and Cedar Lake Cellars
- Wright City School District
- Hwy. F Frontage
- 3 Ponds - .35 Acres, .1 Acres, .1 Acres
- Potential Lake Site
- Your own private estate or an incredible development opportunity
- Two additional points of access from the north via easements
- Mature trees and access roads throughout property

PROPERTY DESCRIPTION:

Just south of HWY 70 and Wright City, MO is this beautiful 62.5+/- acre property that is full of potential.

With HWY F frontage, this property sits between Wright City Parks, beautiful subdivisions, and is only minutes away from both Innsbrook Resort and Cedar Lake Cellars. This could be your own private estate or is a perfect development opportunity.

The property has been incredibly well maintained with rolling hills, open meadows, and a diverse range of mature trees. There are existing access roads throughout that are easy to navigate and there are two additional access points available via easements on the north side of the property. It also has three small ponds and could be a great potential lake site.



PRESENTED BY:

PHIL BROWN

Broker/Partner

M: (314) 753-7444

P: (855) 573-5263 x700

E: philbrown@trophy.com

Trophy Properties and Auction

15480 Clayton Road

Suite 101

Ballwin, MO 63011

www.Trophy.com

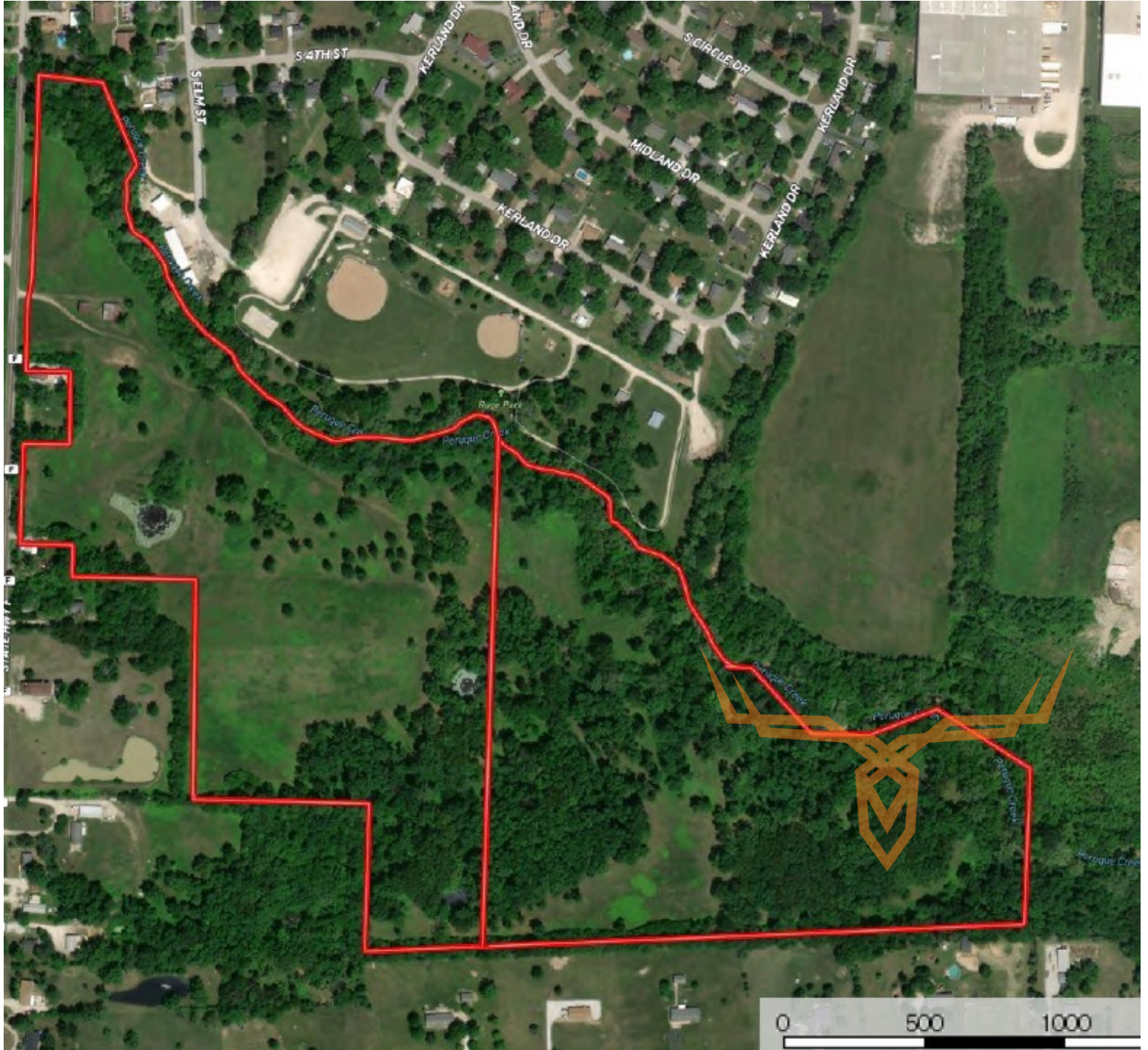
leads@trophy.com



Warren County Missouri Paradise - Close to Innsbrook Resort

TROPHY
PROPERTIES AND AUCTION
LAND | RECREATIONAL | RESIDENTIAL

www.TrophyPA.com • (855) 573-5263 • leads@trohypa.com



Broker does not guarantee the accuracy of sq. ft., lot size, or other information, buyer is advised to independently verify the accuracy of information through personal inspection and with appropriate professionals